

Fostex®



T20RPmkII



T40RPmkII



T50RP



RP Series
Stage & Studio Headphones

PROFESSIONAL

Main features

- Patented RP Technology
- Newly developed RP Diaphragm with copper foil etched polyimide film and neodymium magnet construction for accurate and natural acoustic sound reproduction
- Single entry locking 3 metre 'copper construction' cord
- Padded ear cushions for maximum sound isolation and deep bass reproduction
- Wide, self-adjusting headband for superb comfort and extended wearing periods
- Compatible with all analog and digital formats

T20RpmkII

- Frequency Response: 20Hz - 30kHz
- Semi-open type construction offers rich low frequency sound whilst maintaining all the nuances of vocal performance
- Excellent transient characteristics
- Ideal for professional use in commercial recording studios

T40RpmkII

- Frequency Response: 15Hz - 30kHz
- Enclosed type for excellent sound reproduction. Also prevents feedback into the mic at recording sessions
- Ideal for professional use in noisy environments, the first choice for DJ work and broadcast sound engineers

T50RP

- Frequency Response: 15Hz - 35kHz
- Damped semi-open type for extended low-frequency and clear mid / high frequency reproduction
- Superb quality and perfect for commercial recording use and critical listening applications



RUGGED CONSTRUCTION

To minimize unwanted resonances and to increase rigidity, the drive unit is securely adhered to the housing by using a joint pole which has anti-vibration material bonded on its contact surfaces. High sound pressure levels are handled with ease.



RP Series Professional Headphones

ULTRA COMFORTABLE - EVEN FOR LONG PERIODS
When you're on one of those 'round-the-clock' sessions, the last thing you need is ill-fitting, clunky headphones.
Rest assured, that the wide self-adjusting headband and padded leatherette ear cushions make the RP Series some of the most comfortable headphones around.

The new Fostex T20RpmkII and T40RpmkII now join the acclaimed T50RP in offering the true and accurate headphone monitoring crucial for recording studios, post houses, remote broadcast facilities, project studios and DJ'.

Here is a range of headphones which have been designed from the outset to offer the widest frequency range, to minimise listening fatigue and to allow you to accurately pinpoint and analyse all aspects of your creative output.

Headphones which faithfully reproduce all aspects of the program material, free from any sonic coloration and distortion.

And headphones which combine supreme clarity and audio

performance in a comfortable, sophisticated design.

CLEAR, TRANSPARENT SOUND

All RP Series headphones deliver this uncolored reproduction and natural clear sound right across the full frequency range with full bass and sparkling highs.

But it's the sonic quality at high sound pressure levels which really sets these headphones apart. Whereas lesser headphones struggle at high sound pressure levels, the RP Series have no such problems. The bass is always powerful and distortion-free even at high levels. - Essential when headphone monitoring in noisy environments such as ENG recording, DJ work, and in



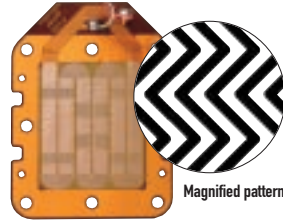
UNIQUE RP TECHNOLOGY
'RP' stands for 'Regulated Phase', a transducer technology which has earned Fostex over 20 international patents. It has been applied to headphones, microphones and loudspeakers used in professional and commercial recording sound installations the world over.

RP Diaphragm Technology

All RP Series headphones utilize a newly designed development called an 'RP Diaphragm'. This unique Fostex technology employs a copper foil etched polyimide film to provide resistance to high level input peaks of up to 3000mW combined with a neodymium magnet for high sensitivity and excellent transient handling.

This combination lifts quality of the audio reproduction above that of lesser headphones based on 'old technologies'.

In short, the Fostex RP Series offer perhaps the most natural and uncolored sound yet heard from studio headphones.



Magnified pattern

RP DIAPHRAGM - ZIGZAG PATTERN

By making the pattern of the coil a zigzag pattern, the stiffness of vertical and horizontal directions is well balanced reducing unwanted peaks in high frequencies and resulting in a very natural sound. By using copper foil rather than conventional aluminium foil and by using a base film constructed of polyimide instead of conventional polyester, the RP Series superbly handles high sound pressure levels with minimum distortion.



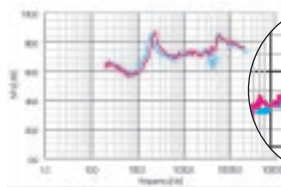
STRAIGHT LINE PATTERN

The Doppler Vibration Laser Analysis diagram clearly shows that a straight line coil pattern exhibits unwanted peaks and troughs.



ZIGZAG PATTERN

A zigzag coil pattern meanwhile results in much smoother results.



By utilizing a Zigzag coil pattern less peaks are present in the mid to high frequencies.

█ Zigzag coil pattern
█ Straight line coil pattern



MAGNETIC CIRCUIT

The design of the magnet and its neodymium construction means that the RP Series realizes three-times more flux density than usual. In addition flux vectors are efficiently distributed inside the circuit with minimal leakage. It's these technological advancements and attention to detail which sets the RP Series apart.

phones

applications where you need to concentrate totally on your the program material.

The Design of the leatherette padded ear cushions enhance the excellent sound isolation and superb deep bass reproduction

UNIQUE FOSTEX RP TECHNOLOGY

Key to the transparent sound reproduction is Fostex's Regulated Phase Technology, a proprietary transducer and diaphragm design that has earned Fostex more than twenty international patents and has been successfully applied to microphones, headphones and loudspeakers used and relied upon in professional and commercial sound installations worldwide.

This technology has been enhanced still further in a new RP Diaphragm (now standard across the range), which uses copper foil etched polyimide film to provide excellent resistance to high level input peaks of up to 3000mW, ensuring an accurate sound regardless of the volume.

COMFORT AND DURABILITY

Manufactured to the most exacting standards with durable, tough and rugged materials and components, RP Series headphones are not only built to last.

They're also built for comfort. Those padded ear cushions and wide, self adjusting headbands ensure maximum comfort and fit during extended wearing periods.

Fostex's eye for design and real-world usability can also be seen in the lockable, single entry jack which minimizes cord tangles and offers excellent serviceability.

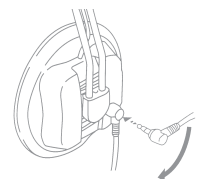
THE LAST WORD

Whether you're monitoring analog or digital audio sources, work in a professional or project studio, mixing live, or need a great pair of 'cans for DJ work, you require headphones which offer solid bass, clear mids and sparkling highs. And faithfully reproduce all aspects of the program material, free from any sonic coloration and distortion. A pair of Fostex RP Series headphones will deliver all this. And then some.



LOCKABLE JACK

All RP Series headphones feature single entry side jack with the plug point featuring a locking mechanism for secure operation. A single cord minimizes cord tangles and offers exceptional ease of service. The supplied quality 3 metre cable (copper construction) assures optimum audio quality.





PROFESSIONAL Specifications

T20RPmkII

Type
Semi-open RP dynamic
Frequency Response
20 Hz - 30 kHz
Sensitivity
97 dB/mW
Max Input
2000 mW
Impedance
50 ohm
Weight
330g (excluding cable)



At a glance...

- Semi open style - smooth vocal reproduction along with punchy low and well balanced mid/high frequencies
- Lockable 3m headphone cord supplied
- Head pad supplied for extra comfort

T40RPmkII

Type
Enclosed RP dynamic
Frequency Response
15 Hz - 30 kHz
Sensitivity
96 dB/mW
Max Input
2000 mW
Impedance
50 ohm
Weight
330g (excluding cable)



At a glance...

- Enclosed style for maximum feedback prevention and clear transparent reproduction off all audio frequencies.
- Lockable 3m headphone cord supplied
- Ultra comfortable with Head pad supplied

T50RP

Type
Semi-open RP dynamic
Frequency Response
15 Hz - 35 kHz
Sensitivity
98 dB/mW
Max Input
3000 mW
Impedance
50 ohm
Weight
330g (excluding cable)



At a glance...

- Damped semi open style. RP technology results in an extended low-frequency range plus crystal-clear mid and high frequency reproduction
- Lockable 3m headphone cord supplied
- Ultra comfortable with Head pad supplied

Also available...

T-SERIES Dynamic Headphones

Manufactured from ultra-light materials (these comfortable sets weigh in at under 230g) and featuring new diaphragms to maximize audio performance, these stereo headphones offer superb all-round capability. Ideal for less demanding applications.



T-5

T-5 specs

- Impedance 44 ohm
- Sensitivity 96dB/mW
- Max input level 100mW
- Weight 220g



T-7

T-7 specs

- Impedance 70 ohm
- Sensitivity 98dB/mW
- Max input level 100mW
- Weight 230g

PH-100 & PH-50 Headphone Distribution Amplifiers

The PH-100 (10-way) and PH-50 (5-way) are remarkably quiet headphone distribution amplifiers. +4dBu or -10dBV switchable balanced inputs are offered plus an addition unbalanced Aux In with separate level control for handy cue feed from main mixer. Each output (available both front and rear) has its own amplifier as well as its own level control and multiple PH-100 / PH-50s can also be cascaded to handle a large number of listeners.



Fostex

Distributor / Authorised Dealer

www.fostex.co.jp

Fostex Corporation, 3-2-35 Musashino, Akishima, Tokyo, Japan 196-0021
Tel: +81 (0)42-546-4974 Fax: +81 (0)42-546-9222