

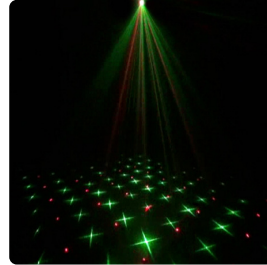
# KAM

## Laser lighting effects

### STAR CLUSTER MICRO V1

#### Compact and powerful laser kit with multi star cluster effects

Complete with universal mounting bracket  
Also comes with mini-tripod  
Full multi-function remote control  
50mW@532nm adjustable green laser  
100mW@650nm red laser  
Temperature controlled diodes  
Selectable multi star cluster effects  
Built-in animated patterns  
Sound-to-Light and Auto modes  
Tough all-metal chassis  
Cooling fan  
Travel power adapter  
Power supply: AC100V-240V / 50Hz~60Hz  
Dimensions: 117 x 92 x 46mm / Weight: 0.35Kg  
PRODUCT CODE: **9278**



### STAR CLUSTER MICRO V2

#### Compact and powerful laser kit with a different set of cluster and laser effects to the original Star Cluster Micro

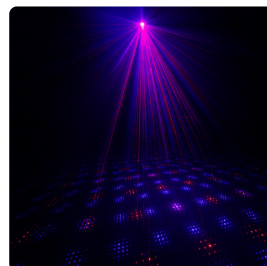
Complete with universal mounting bracket  
Also comes with mini-tripod  
Full multi-function remote control  
50mW@532nm adjustable green laser  
100mW@650nm red laser  
Temperature controlled diodes  
Selectable multi star cluster effects  
Built-in animated patterns  
Sound-to-Light and Auto modes  
Tough all-metal chassis  
Cooling fan  
Travel power adapter  
Power supply: AC100V-240V / 50Hz~60Hz  
Dimensions: 117 x 92 x 46mm / Weight: 0.35Kg  
PRODUCT CODE: **9278-2**



### STAR CLUSTER MICRO RB 300

#### Compact and powerful laser kit with multi star cluster effects

Complete with universal mounting bracket  
Also comes with mini-tripod  
Full multi-function remote control  
100mW@650nm red laser  
Ultra powerful 80mW@450nm true blue laser  
Temperature controlled diodes  
Selectable multi star cluster effects  
Built-in animated patterns  
Sound-to-Light and Auto modes  
Tough all-metal chassis  
Cooling fan  
Travel power adapter  
Power supply: AC100V-240V / 50Hz~60Hz  
Dimensions: 117 x 92 x 46mm / Weight: 0.35Kg  
PRODUCT CODE: **9278-3**



www.kam.co.uk

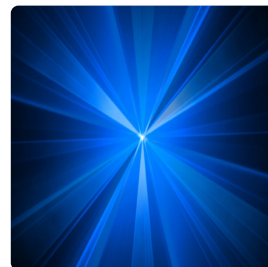
# KAM

## Laser lighting effects

### iLINK BLUE 500

#### Stunning new blue laser from the Kam iLink series

490mW blue laser complete with full remote control  
Plug & Play operation & built-in patterns  
Linkable as a kit in Master/Slave mode  
Auto, Sound-to-Light & DMX512 modes  
3 pin XLR / 8 channel DMX512 operation  
LED function display / Fan cooled operation  
Key operated safety control / safety mounting point  
Adjustable hanging bracket / tough metal chassis  
Mains Input: AC100-240V, 50/60Hz  
Dimensions (WxHxD): 145 x 165 x 80mm / Weight: 1.3 Kg  
PRODUCT CODE: **9269-B**



### iLINK RVP

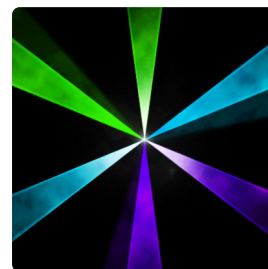
#### Breathtaking laser from the Kam iLink series

100mW Red + 150mW Violet colour mixed to equal Pink  
Now supplied with full remote control  
Plug & Play operation & built-in patterns  
Linkable as a kit in Master/Slave mode  
Auto, Sound-to-Light & DMX512 modes  
3 pin XLR / 10 channel DMX512 operation  
LED function display / Fan cooled operation  
Key operated safety control / safety mounting point  
Mains Input: AC100-240V, 50/60Hz  
Dimensions (WxHxD): 160 x 160 x 80mm / Weight: 1.3 Kg  
PRODUCT CODE: **9267**

### iLINK GVC

#### Breathtaking laser from the Kam iLink series

40mW Green + 150mW Violet colour mixed to equal Cyan  
Now supplied with full remote control  
Plug & Play operation & built-in patterns  
Linkable as a kit in Master/Slave mode  
Auto, Sound-to-Light & DMX512 modes  
3 pin XLR / 10 channel DMX512 operation  
LED function display / Fan cooled operation  
Key operated safety control / safety mounting point  
Mains Input: AC100-240V, 50/60Hz  
Dimensions (WxHxD): 160 x 160 x 80mm / Weight: 1.3 Kg  
PRODUCT CODE: **9268**



### iLINK RGY

#### Breathtaking laser from the Kam iLink series

100mW Red + 40mW Green colour mixed to equal Yellow  
Now supplied with full remote control  
Plug & Play operation & built-in patterns  
Linkable as a kit in Master/Slave mode  
Auto, Sound-to-Light & DMX512 modes  
3 pin XLR / 10 channel DMX512 operation  
LED function display / Fan cooled operation  
Key operated safety control / safety mounting point  
Mains Input: AC100-240V, 50/60Hz  
Dimensions (WxHxD): 160 x 160 x 80mm / Weight: 1.3 Kg  
PRODUCT CODE: **9269**

www.kam.co.uk

# KAM

## Laser lighting effects

### LASERSCAN 500 BLUE

#### Clear blue DMX laser

490mW crystal blue laser effect  
Fast scanning motor and full remote control  
Full DMX512 operation / 17 DMX channels  
Sound-to-Light operation via built-in mic  
Auto and Master/Slave modes  
LED program display on rear of unit  
Safety chain loop / Safety key On/Off lock  
Tough metal chassis / Mains fused IEC  
Dimensions: 190 x 150 x 190mm (WxHxD)  
Weight: 1.5Kg  
PRODUCT CODE: **9240-01**



### LASERSCAN 170RGY

#### Part of the stunning Kam Laserscan linking series

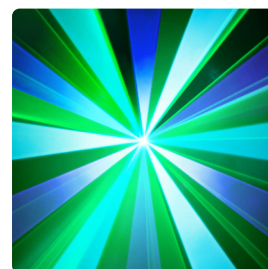
120mW red / 50mW green laser colour mixed to yellow  
Links to Kam Laserscan 180RBP and Laserscan 120GBC  
Fast scanning motor and full remote control  
Full DMX512 operation / 17 DMX channels  
Sound-to-Light operation via built-in mic  
Auto and Master/Slave modes  
LED program display on rear of unit  
Safety chain loop / Safety key On/Off lock  
Tough metal chassis / Mains fused IEC  
Dimensions: 190 x 150 x 190mm (WxHxD) / Weight: 1.5Kg  
PRODUCT CODE: **9060**



### LASERSCAN 120GBC

#### Part of the stunning Kam Laserscan linking series

40mW green / 80mW blue laser colour mixed to cyan  
Links to Kam Laserscan 180RBP and Laserscan 170RGY  
Fast scanning motor and full remote control  
Full DMX512 operation / 17 DMX channels  
Sound-to-Light operation via built-in mic  
Auto and Master/Slave modes  
LED program display on rear of unit  
Safety chain loop / Safety key On/Off lock  
Tough metal chassis / Mains fused IEC  
Dimensions: 190 x 150 x 190mm (WxHxD) / Weight: 1.5Kg  
PRODUCT CODE: **9060-2**



### LASERSCAN 180RBP

#### Part of the stunning Kam Laserscan linking series

100mW red / 80mW blue laser colour mixed to purple  
Links to Kam Laserscan 120GBC and Laserscan 170RGY  
Fast scanning motor and full remote control  
Full DMX512 operation / 17 DMX channels  
Sound-to-Light operation via built-in mic  
Auto and Master/Slave modes  
LED program display on rear of unit  
Safety chain loop / Safety key On/Off lock  
Tough metal chassis / Mains fused IEC  
Dimensions: 190 x 150 x 190mm (WxHxD) / Weight: 1.5Kg  
PRODUCT CODE: **9060-3**



www.kam.co.uk



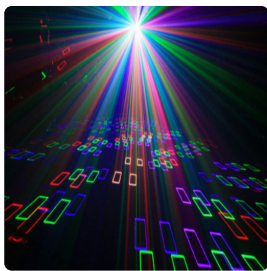
# KAM

## Laser lighting effects

### LASERSCAN 1000RGB

**1000mW professional RGB laser with in-air beam FX plus burst grating shutter FX in one unit!**

400mW red / 150mW green / 450mW blue laser  
25Kpps fast scanning motor  
Full 19 channel DMX512 operation with XLR in/output  
ILDA DB25 input/output/through for custom lightshows  
Sound-to-Light operation via built-in mic  
Auto and Master/Slave modes  
LED program display on rear of unit  
Safety chain loop / Safety key On/Off lock  
Tough metal chassis / Mains fused IEC  
Dimensions: 336 x 259 x 120mm (WxDxH)  
Class 4 laser  
PRODUCT CODE: **9240-02**



### LASERSCAN 1200RGB

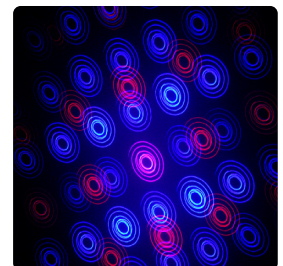
**1200mW professional RGB laser with in-air beam FX plus burst grating shutter FX in one unit!**

550mW red / 200mW green / 450mW blue laser  
25Kpps fast scanning motor  
Full 19 channel DMX512 operation with XLR in/output  
ILDA DB25 input/output/through for custom lightshows  
Sound-to-Light operation via built-in mic  
Auto and Master/Slave modes  
LED program display on rear of unit  
Safety chain loop / Safety key On/Off lock  
Tough metal chassis / Mains fused IEC  
Dimensions: 336 x 259 x 120mm (WxDxH)  
Class 4 laser  
PRODUCT CODE: **9240-03**

### GOBOLASER 550RB

**Vivid 550mW red and blue laser with gobo type grating shutter FX**

350mW @ 447nm blue laser  
200mW @ 650nm red laser  
Micro stepper motor  
More than 20 smooth blue and red grating patterns  
Auto mode  
Sound-to-Light operation via built-in mic  
Variable microphone sensitivity  
Tough metal chassis / Mains fused IEC  
Safety chain loop / Safety key On/Off lock  
Fan cooled operation  
Weight: 2.3 Kg  
PRODUCT CODE: **9061**



www.kam.co.uk