

COMING EARLY
SEPTEMBER
ORDER NOW!

KAM[®]



standaloneDMXplayer

Chromateq[®]

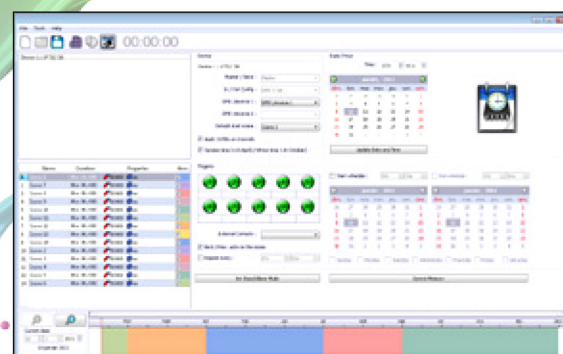
DMXPlayer is the ideal DMX512 software for all Architectural applications thanks to its ability to configure scene triggers and write a show in to the memory of the Stand Alone interface. The software and the hardware are PC and MAC compatible and are optimized to manage all LED any type of DMX fixture due to its advanced RGB (W/AY) and Pan/Tilt features.

Available tools:

- Provides all the software functions included in the Led Player 512
- Stand Alone mode to configure Triggers and load scenes in memory
- Graphic Time Line to display an overview for all your time triggers

Main Functions:

- 16 bit, micro and fine DMX channel and Real Time Clock management in Stand Alone
- Can save 255 scenes and 4096 steps per scene
- Each scene can be triggered by Time, Date, Remote Control, Buttons or Contact Closures
- Compatible with all 32 and 64 bit systems (Mac/Pc)

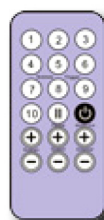


Technical Features:

- USB 2.0 to 512 Stand Alone DMX Input/Output channels
- 1 Mb memory that allows 1 year's worth of show (capacity: 2000 steps / 512 ch)
- Trigger (default), Dimmer, and Speed mode
- 10 mechanical buttons included for scene triggers + 1 next + 1 previous button
- 15 External Contact Closure triggers allowed
- Slave/Master, Contact Closure and Remote Control triggers (RJ45)
- DMX Output Speed Signal also able to be configured in stand alone
- Housing that can be directly wall mounted or mounted on a DIN RAIL

Minimum configuration required:

- Operating system: Mac Os X, Windows 32 or 64 bit (2000, XP, Vista, 7)
- CPU: 1Ghz ; RAM memory: 512 Mb
- Hard Disk space: 150 Mb



www.kam.co.uk