

Philips
DVD home theater system



MX2500D

Bring your movies and music to life

The power of the cinema experience right in your own home! It's a complete entertainment experience with virtually every disc format in Dolby and DTS surround modes!

Superb audio and video performance

- DTS 5.1 Dolby Digital Pro Logic II full surround sound
- Progressive Scan component video for optimized image quality
- Class 'D' digital amplifier for quality sound performance

Quick and easy set-up

- Easy-fit™ connectors with color-coding for a simple set-up
- Easy set-up to initialize your total home entertainment

Plays practically any disc format

- Movies: DVD, DVD+R/RW, DVD-R/RW, (S)VCD
- Music: CD, CD-R/RW and MP3-CD
- Picture CD (JPEG) with music (MP3) playback
- Photos: Picture CD (JPEG)

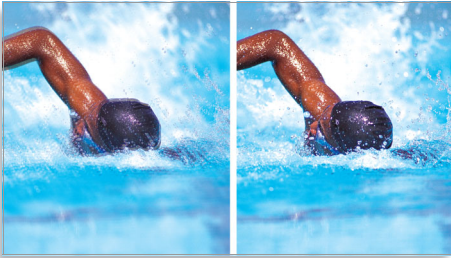
PHILIPS
sense and simplicity

Highlights

DTS, Dolby Digital 5.1 and PL2

A Built-in DTS and Dolby Digital decoder eliminates the need for an external decoder by processing all six channels of audio information to provide a surround sound experience and an astoundingly natural sense of ambience and dynamic realism. Dolby Pro Logic II provides five channels of surround processing from any stereo source.

Progressive Scan

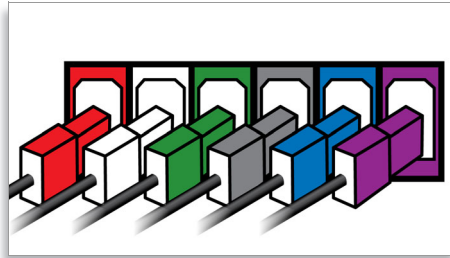


Progressive Scan doubles the vertical resolution of the image resulting in a noticeably sharper picture. Instead of sending a field comprising the odd lines to the screen first, followed by the field with the even lines, both fields are written at one time. A full image is created instantaneously, using the maximum resolution. At such a speed, your eye perceives a sharper picture with no line structure.

Class 'D' Amplifier

Class 'D' Digital Amplifier takes an analog signal, converts it into a digital signal and then amplifies the signal digitally. The signal then enters a demodulation filter to give the final output. The amplified digital output delivers all the advantages of digital audio, including improved sound quality. In addition, Class 'D' Digital Amplifier has greater than 90% efficiency compared to traditional AB amplifiers. This high efficiency translates into a powerful amplifier with a small footprint.

Easy-fit™ connectors



Color-coded connectors provide a simple and user-friendly solution to connect the speakers and subwoofer to the center unit of the home entertainment system simply by plugging the connectors in the matching colored interface at the rear of the center unit.

Quick Start Guide

To guide you through the initial set-up of your system, Philips delivers a Quick Start Guide that uses an easy approach with clearly defined graphics and colors to guide you through the basic steps of connection and obtaining picture and sound. These basic steps are clearly described on one page in the packaging box, making setup quick and simple.

Multi-format Movies

Multi-format playability allows you to play most disc formats for maximum disc compatibility and viewing pleasure.

Multi-format Music

Multi-format playability allows you to play most disc formats for maximum disc compatibility and listening pleasure.

Picture CD with MP3 Playback

Picture CD is a CD-R or CD-RW disc on which you can store your MP3 and digital pictures. When inserting a Picture CD in the DVD player, a screen menu will pop up, showing your JPEG's and/or MP3 files on the disc. Just select the music and pictures files you wish to enjoy and press play or OK. You can watch your pictures on TV with your music playing simultaneously.

Picture CD (JPEG)

Multi-format playability allows you to view images in the comfort of your living room and play most disc formats for maximum disc compatibility and viewing pleasure.



Issue date 2009-05-07

Version: 2.0.4

12 NC: 9073 100 12113
EAN: 87 10895 84677 6

© 2009 Koninklijke Philips Electronics N.V.
All Rights reserved.

Specifications are subject to change without notice.
Trademarks are the property of Koninklijke Philips Electronics N.V. or their respective owners.

www.philips.com

Specifications

Picture/Display

- Aspect ratio: 4:3, 16:9
- D/A converter: 24bit / 96 kHz

Sound

- Equalizer settings: Action, Classic, Concert, Digital, Drama, Jazz, Rock, Sci-Fi
- Output power (RMS): 200W
- Sound Enhancement: Class "D" Digital Amplifier, Night Mode, Treble and Bass Control
- Sound System: Dolby Digital (AC-3), Dolby Prologic II, DTS
- Volume Control: rotary

Audio Playback

- Compression format: Dolby Digital, DTS, MP3, PCM
- Disc Playback Modes: Fast Forward/Backward, Next/Previous Album Search, Next/Previous Track Search