



qtXsound®

PPA-series Portable Sound Sets

PPA72 (170.127)
PPA74 (170.125)

User Manual



Features:

- Complete self-contained portable PA system
- CD/DVD/CD+G/CDR player
- USB/SD/MMC media player
- Echo effect for microphone inputs
- Mains or internal re-chargeable battery operation
- Integral trolley with telescopic handle
- Full function remote control

www.qtxsound.com

Introduction:

Thank you for choosing a QTX Sound PPA series portable PA set. This product has been designed to offer reliable, versatile playback and public address for many varied situations. In order to gain the best results from this equipment and avoid damage through misuse, please read and follow these instructions and retain for future reference.

Warning:

To prevent the risk of fire or electric shock, do not expose any of the components to rain or moisture. If liquids are spilled on the surface, stop using immediately, allow unit to dry out and have checked by qualified personnel before further use.

Avoid impact, extreme pressure or heavy vibration to the unit.

There are no user serviceable parts inside the unit – refer all servicing to qualified service personnel.

Safety

- For re-charging and mains operation, check the supply voltage and use the correct IEC lead supplied.
- Ensure mains leads and signal leads are in good condition
- Do not use the USB connector as a general purpose power source or charger.
- Do not allow any foreign particles or moisture to enter the unit through vents or connectors
- Do not cover cooling vents and keep clear from dust and debris.

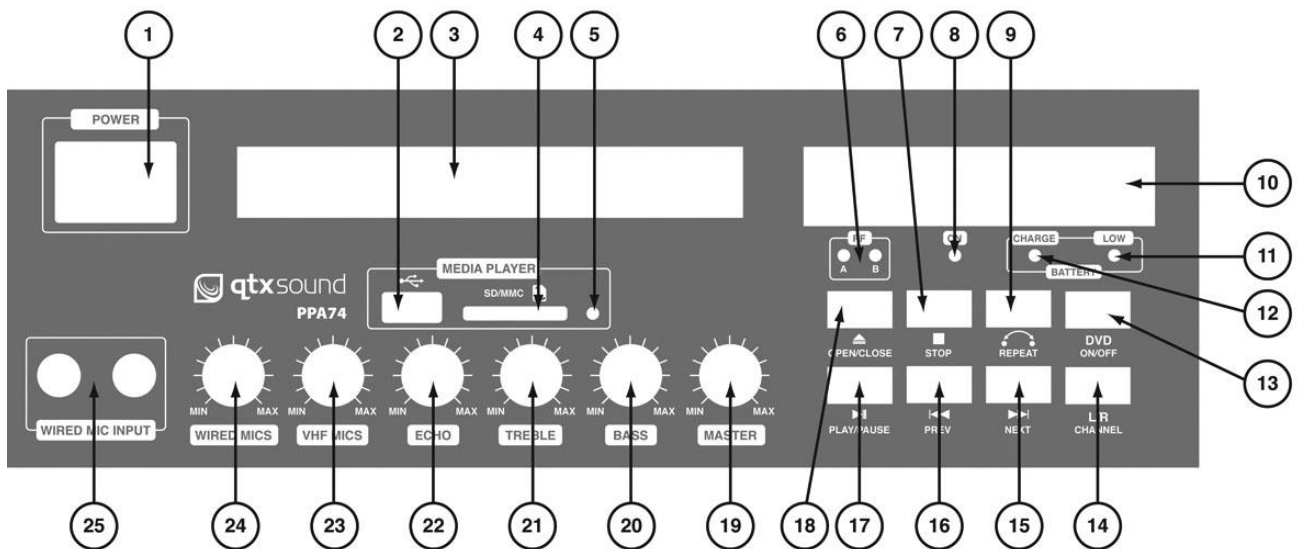
Placement

- Keep the unit in an upright position on a stable surface or sturdy pole-mount stand
- Keep out of direct sunlight and away from heat sources.
- Keep away from damp or dusty environments.
- Avoid using the trolley mechanism on uneven surfaces as this can cause the unit to fall

Cleaning

- Use a soft cloth with a neutral detergent to clean the casing as required
- Use a soft brush to clear debris from the cooling vents
- Do not use strong solvents for cleaning the unit.

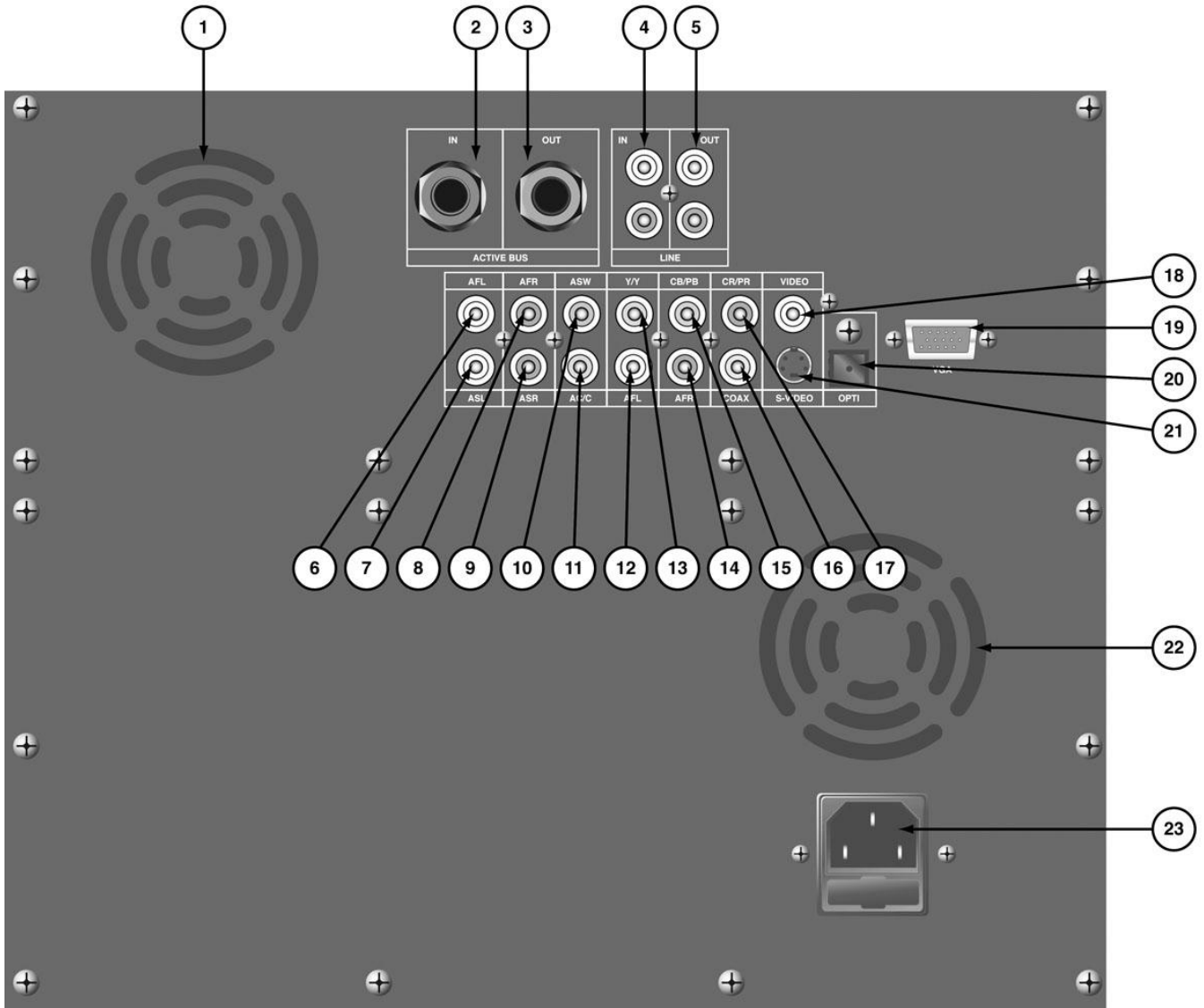
Control Panel



24. Mains POWER switch
25. USB type A memory device input
26. CD/DVD disc drawer
27. SD/MMC card slot
28. USB/SD/MMC media player status indicator
29. VHF wireless microphone indicators (PPA74 only)
30. Transport control: STOP track
31. Power ON indicator
32. Transport control: REPEAT
33. Audio player Mode, Status and Time display
34. BATTERY low indicator
35. BATTERY charging indicator
36. DVD ON/OFF switch

13. L-R karaoke stereo output mode switch
14. Transport control: FORWARD/NEXT track
15. Transport control: REVERSE/PREVIOUS track
16. Transport control: PLAY/PAUSE track
17. OPEN/CLOSE disc eject button
18. MASTER volume control
19. BASS tone control
20. TREBLE tone control
21. ECHO control for microphones
22. VHF MICS level control (PPA74 only)
23. WIRED MICS level control (MICS 1 + 2 on PPA72)
24. WIRED MIC input (MICS 1 + 2 on PPA72)

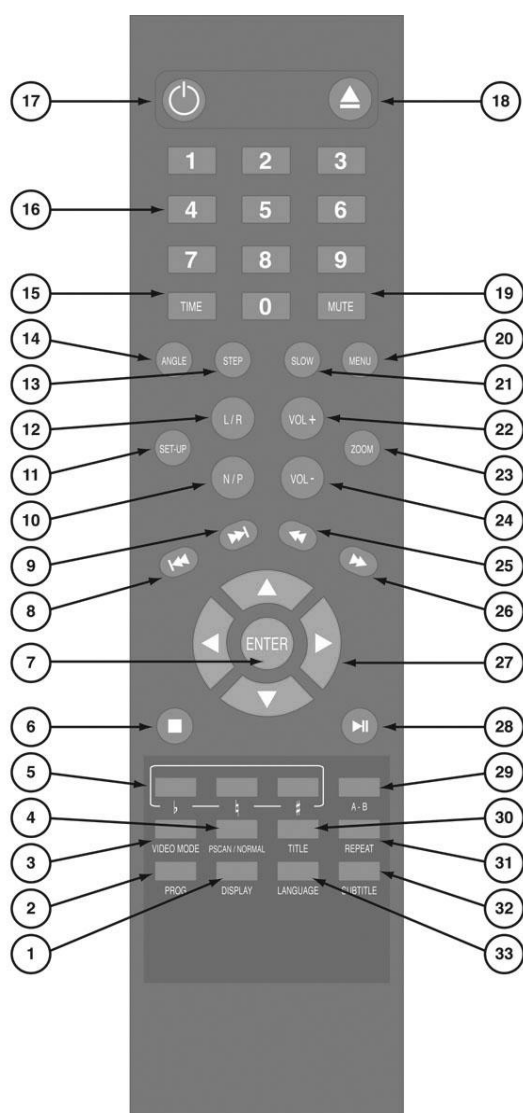
Rear Panel



1. Cooling fan – do not cover
2. ACTIVE BUS IN from another PPA unit
3. ACTIVE BUS OUT to another PPA unit
4. LINE IN – L+R auxiliary RCA input
5. LINE OUT – L+R main mix RCA output
6. Audio Front Left RCA input
7. Audio Surround Left RCA input
8. Audio Front Right RCA input
9. Audio Surround Right RCA input
10. Audio Subwoofer RCA input
11. Audio Centre RCA input
12. Audio Front Left RCA input

13. Component video Y (luminance) output
14. Audio Front Right RCA input
15. Component video PB (blue-Y) output
16. S/PDIF audio coaxial output
17. Component video PR (red-Y) output
18. Composite video output
19. VGA video output
20. TOSLINK optical S/PDIF audio output
21. S-Video output
22. Cooling fan – do not cover Power ON indicator
23. MAINS inlet with fuse

Remote Control



1. DISPLAY mode key
2. PROG – Program track order
3. VIDEO MODE select
4. PSCAN/NORMAL – Progressive scan select
5. Pitch keys – flat/natural/sharp
6. Transport: STOP key
7. ENTER key
8. Previous track key
9. Next track key
10. N/P - NTSC/PAL select
11. Video: SET-UP key
12. L/R stereo mode
13. Video: STEP frame search key
14. Video: ANGLE select
15. TIME key
16. Numerical keypad
17. Standby/On key
18. Disc tray open/close (eject)
19. MUTE key
20. MENU select
21. Video: SLOW key
22. Volume +
23. Video: ZOOM key
24. Volume -
25. Fast Reverse
26. Fast forward
27. Navigation keys
28. Play/Pause key
29. A – B toggle key
30. Video: TITLE screen select
31. REPEAT key
32. Video: SUBTITLE select
33. Video: LANGUAGE select

Connection

Connect the 2 wired microphones to the 6.3mm jack inputs on the front panel

Install 2 x AAA batteries in the remote control handset.

For the PPA74 model, install PP3 batteries into the VHF wireless microphones and connect antennae at the rear.

Connect any required auxiliary line input to the LINE IN RCA connectors on the rear panel.

A left and right output can be connected to further equipment from the LINE OUT connectors on the rear panel.

There are further RCA connectors for 5.1 surround sound connection (AFL, AFR, ASL, ASR, ASW, AC/C) and digital audio (optical and COAX S/PDIF)

Connections for video include Component (Y/Y, CP/PB, CR/PR), Composite video, SVHS and VGA connections.

Multiple PPA units can be connected together to create a larger system by connecting a 6.3mm mono jack lead from the ACTIVE BUS OUT of one PPA unit to the ACTIVE BUS IN of a second PPA unit. This connection can be repeated from the second PPA unit to a further unit and so on until a chain of PPA units is created.

If the unit is to be run from mains power, connect the supplied IEC lead, checking the supply voltage is correct. Switch on the POWER switch on the front panel and turn up the MASTER volume gradually.

If a CD, DVD or karaoke disc is to be used for playback, press OPEN/CLOSE button on either front panel or remote control to open the drawer unit, carefully position the disc in place and press OPEN/CLOSE again.

If a USB pen drive or SD/MMC card with compressed digital audio is to be used for playback, insert this media into the correct slot on the front panel.

Operation

Playback may start automatically and tracks can be played, paused and navigated using the front panel or remote control transport controls. For CD/DVD player, it may be necessary to press DVD ON/OFF.

A backlit LCD display shows the status and elapsed time of playback material.

Adjust the MASTER volume control to the required level for the playback and then balance with any auxiliary input. Switch on wired microphones and gradually increase the WIRED MIC (or MIC1 and MIC2) volume controls whilst testing the level of speech into the microphone through the speaker. For PPA74, repeat this process for the VHF wireless microphones.

Adjust BASS and TREBLE controls to achieve the required tone characteristic for microphone and line inputs.

Adjust ECHO control to vary the amount of echo to be applied to microphone inputs for karaoke/vocalists.

Before powering down, it is advisable to turn the MASTER volume down to avoid a loud click when switching off.

Switch off wired and wireless microphones plugged into the unit and remove USB or SD/MMC card media.

Remove any CD or DVD media by pressing OPEN/CLOSE, removing disc and pressing OPEN/CLOSE again.

Press the POWER switch to power down. This will be then be the charging mode for the internal battery.

SPECIFICATIONS		
Model	PPA72	PPA74
(Stock Code)	(170.127)	(170.125)
Power Supply	240Vac 50Hz and dual rechargeable 12V/5Ah batteries	
Output power	70Wrms @ 4Ω	
Microphone inputs	2 x 6.3mm jack	2 x 6.3mm jack + 2 x VHF wireless
VHF microphone power supply	N/A	9Vdc (PP3 battery) each
VHF microphone frequencies	N/A	173.8MHz + 174.8MHz
Aux Input	L + R RCA line input	
Video outputs	Component, Composite, SVHS and VGA	
Audio outputs	L+R line out, 5.1 surround, S/PDIF optical and coax	
Multiple unit link	Active bus IN and OUT, 6.3mm jack	
Disc Player	CD, CDR, CD+G and DVD playback	
Digital Media Player	Compressed digital audio from USB pen drive or SD/MMC card	
Charge time	8 hours	
THD	<0.1%	
Frequency response	50Hz - 20kHz (±3dB)	
Dimensions (mm)	540 x 330 x 290mm	
Weight	21.4kg	

Troubleshooting

No LEDs lit on front panel	Ensure mains is connected properly or battery is charged
Battery "CHARGE" LED is lit	Check mains lead and supply voltage are correct
Battery "LOW" LED is lit	Unit is in re-charging mode – switch power on to operate
No playback from CD or DVD	Switch to mains power or switch off until battery is charged
USB/SD player will not play audio from media (CM-LIVE models only)	Check format is correct (will not play CDROM and some other types)
	Press DVD ON/OFF button and use transport controls to check
	Press PLAY on transport controls
	Check memory device is connected properly (remove and re-insert)
No output from VHF microphones (PPA74 only)	Check file types – standard compressed digital audio files required
	Check memory device works on a PC or Mac for standard playback
Output is very quiet	Check batteries in handheld transmitters
	Check handheld transmitters are switched on
	Turn up MASTER and/or Microphone level controls
	Check volume controls are not turned down on remote control
	If Battery LOW LED is lit, switch to mains power or charge battery
Output is very loud or distorted	Press L/R CHANNEL button to check karaoke output mode
	Check for quiet recording of media files on USB/SD or CD
	Check level of input signal is not too high
	Reduce Microphone level controls
	Reduce MASTER level control
Feedback (loud squealing or howling from mics)	Ensure Hi-Z line level input(s) not connected via XLR
	Check for high gain recording of media files on USB/SD or CD
	Face the microphone away from the speaker
	Reduce Microphone LEVEL control and ECHO control
	Reduce MASTER volume control

Note: for further troubleshooting, refer equipment to qualified service personnel for testing