

Pioneer *sound.vision.soul*

Pioneer
PRO DJ



PRO DJ RANGE



DJSOUNDS.COM

TRAILBLAZING TECHNOLOGY

Pioneer's Pro DJ range has earned an unrivalled reputation for excellence by applying research and development that is second to none and offering exciting new avenues for artistry around the world.

Blazing a trail for inspirational DJ technology since the CDJ series of digital decks burst onto the scene in 1994, the Pro DJ range remains ahead of the game by listening to the leading professionals in the field and anticipating the ever-changing demands of the industry.

Armed with an award-winning portfolio of products that has revolutionised digital DJing, Pioneer continues to provide DJs with a veritable arsenal of creative tools – and you can find out all about these latest innovations in the pages that follow.

Discover an array of highly intuitive CD players and explore the ground-breaking DVJ DVD/CD deck that has ignited the imagination of both the DJ and VJ communities with its mind-

bending audio-visual blend. Check out an astounding selection of state-of-the-art mixers. Marvel at the levels of music manipulation afforded by the Pro DJ effectors and be amazed at the stylish functionality of Pioneer's headphones, S-FL1 flat panel speakers and DJS digital DJ software.

Read on to find out what makes Pioneer's illustrious Pro DJ range the prime choice for DJs all over the world.



previous page



next page



index



specifications



configurations



www.djsounds.com

INTRODUCTIONS	TECHNOLOGY	2	LINKS
	DVJ / CDJ Series	4-5	LINKS
	DJM Series	6-7	LINKS
	EFX Series	8-9	LINKS
	SVM	10-11	LINKS
PLAYERS	DVJ-1000	12-13	LINKS
	CDJ-1000MK3	14-15	LINKS
	CDJ-800MK2	16-17	LINKS
	CDJ-400	18-19	LINKS
	CDJ-200	20-21	LINKS
	MEP-7000 / SEP-C1	22-23	LINKS
	CMX / DJM-3000	24-25	LINKS
MIXERS	SVM-1000	26-27	LINKS
	DJM-1000	28-29	LINKS
	DJM-800	30-31	LINKS
	DJM-700	32-33	LINKS
	DJM-600/S	34-35	LINKS
	DJM-400	36-37	LINKS
EFFECTORS	EFX-1000	38-39	LINKS
	EFX-500/R	40-41	LINKS
HEADPHONES	HDJ-1000	42-43	LINKS
DJ MIXING SOFTWARE	DJS	44-45	LINKS
DVD PLAYER	DVD-V8000	46-47	LINKS
	ACCESSORIES	48-49	LINKS
	CONFIGURATIONS	50-51	LINKS
	SPECIFICATIONS	52-55	LINKS



previous page



next page



index



specifications



configurations



www.djsounds.com

DVJ / CDJ SERIES

Pioneer's digital decks are universally treasured by DJs because they continue to set exceptional new standards in technology whilst being incredible fun to use live. All these players are carefully crafted around the company's acclaimed Jog Wheel technology, giving DJs total hands-on control over their music.

In addition to the Jog Wheel, Pioneer's CD players include many other key attributes, including Master Tempo, Cue/Loop Memory and, most recently, MP3 compatibility. Furthermore, ergonomic controls ensure that the entire range is applauded as much for its user-friendly design as it is for its pure sound and progressive features.

Thanks to input from leading DJs, Pioneer is proud to offer a Pro DJ range designed to meet the future challenges of an ever-expanding industry and exceed the expectations of DJs everywhere.



previous page



next page



index



specifications



configurations



www.djsounds.com



Jog Wheel

In CDJ mode, the Jog Wheel lets DJs speed up or slow down tracks, fine-tune cue points and use all the other exceptional CDJ functions. In Vinyl mode, DJs can stop/cue up tracks and bend/scratch sounds, just as they would with vinyl.

Cue/Loop Memory

Once a DJ has set a cue or loop point, it can be saved to a deck's internal memory (or external media, if available). This allows DJs to instantly find the cue points for hundreds of tracks.

Master Tempo

This world-famous function locks the pitch of a track, even when its speed is changed. DJs can speed up or slow down the beat, without any difference to the sound of the vocals and instruments.

Loop In/Out Adjust

DJs can easily fine-tune loops by adjusting the In and Out points. The results can then be saved to memory.

Real-Time Seamless Loop

DJs can set a loop quickly and simply, on the fly. Once the loop is set, it can be looped continuously until the ReLoop/Exit button is used. When released, the track continues without pause.

Real-Time Cue

DJs can use the In/Real-Time Cue button to set a cue point instantly, then save it to memory.

Auto Cue

This automatically finds the first beat of a track, although it can be turned off for manual cueing.

Manual Cue

Cue points can be set anywhere on a track, in either Vinyl or CDJ mode, by making adjustments with the Jog Wheel or manual search buttons. The cue point is stored in the deck's internal memory (or external media, if available) until a new cue point overwrites it.

Pitch Bend

This is used to speed up or slow down the tempo of a track, by moving the Jog Wheel (in CDJ mode) either forwards or backwards or by Pitch Bend buttons on the CMX-3000.

Reverse

This function is used to play back in reverse, but without having to stop or start the track. There's no loss of tempo or pitch either.



previous page



next page



index



specifications



configurations



www.djsounds.com

DJM SERIES

Pioneer's extensive Pro DJ range of mixers is internationally renowned for maximising the impact of the mix. Offering DJs untold creative freedom through accessible cutting-edge technology, they deliver the utmost clarity, flexibility and tactile control.

The world-beating range provides a wealth of ingenious features and functions, allowing every DJ to channel their creativity into the most exhilarating performances imaginable, whatever the style or format of music. With super-sensitive fader technology incorporated into logical layouts and stylish designs across 2, 4 and 6 channel models, DJs are given the creativity and freedom needed to perform.

Fully loaded with high-quality components and up to 96 kHz/24-bit audio, these pure-sounding mixers present countless opportunities for DJs to make a sensational impression.



previous page



next page



index



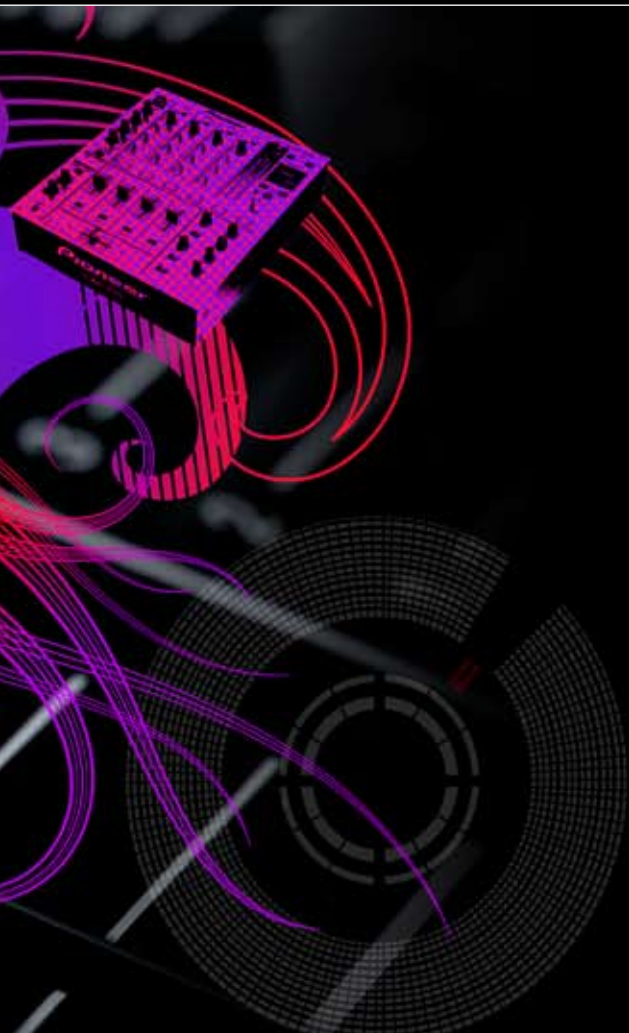
specifications



configurations



www.djsounds.com



Effect Mix Mode

Easily and accurately effects phrases in a BPM-linked operation

Effects

Delay - produces repeat beat effect

Echo - repeated sounds that fade for echo effect

Auto Pan - automatically switches sounds between left and right speakers

Auto Transformer - cuts sounds at requested beat

Auto Filter - creates effects by manipulating sound frequencies

Flanger - produces an electronic wave effect

Reverb - a range of reverberation effects

Pitch Shifter - manipulates music pitch within +/- 1 octave

Send/Return - connects available peripherals (external effects input/output)

Beat Effects

Effects dial for complete control over effect intensity

Effects range enables sound effects on 1/1, 2/1, 4/1, 8/1 beats

Beat Sampler - Rec Mode

Auto Beat Sampler - record up to 8 seconds of sound for sampling

Auto Sync Recording - from any given cue point

Beat Sampler - Play Mode

Manual (Single) Play - sampled music can be activated manually over a track

Auto Loop Play - a sample can be seamlessly/continually looped

Stretch Play - the tempo of a sample can be manipulated with the beat

Channel Fader

Easy-slide, sensitive touch faders

Durable and reliable

Easily replaceable faders

Fader Start Play (with Pioneer's CDJ players)

Cross Fader

Three different cross fader curve patterns can be selected

Fader curve echo, for smoother mixing

Fader Start Play (with Pioneer's CDJ players)



previous page



next page



index



specifications



configurations



www.djsounds.com

EFX SERIES

DJs can enjoy taking the art of spontaneous live remixing to a whole new level with the Pro DJ range of effectors, by changing the dynamics of their music and introducing fresh sounds into their sets.

Working closely with the world's leading exponents of sound manipulation, Pioneer has delivered two huge industry hits in the shape of the professional EFX-1000 digital audio effector and its ever-popular predecessor, the EFX-500. Both these units feature Pioneer's acclaimed Digital Jog Dial technology together with a formidable selection of effects and are as much in demand for use in studios as they are in clubs and bars around the globe.

Blurring the distinction between DJing and production, these effectors allow DJs to create unique live shows by modifying their music according to the set and setting.



previous page



next page



index



specifications



configurations



www.djsounds.com

EFX-1000

96 kHz/24-bit Digital Sampling

Beat & Rhythm Effects

Complete with an Effect Frequency Selection, a variety of beat and rhythm-based effects are available.

Digital Jog Break

There is also a Hold Switch to give DJs the ability to maintain the Jog Dial Effect.

Jog Memory Play

Memorises and reproduces the movements of the Jog Dial, either as a one-off or as a repeating loop.

Jog Break Meter

Expresses the Jog Break movement visually.

Signal Flow Switch

This changes the signal path of the sound and offers 49 patterns of effects in combination with Beat Effect and Digital Jog Break.

Input/Effect Output Level Meter & Control Knob

Offering high-quality sound level adjustment.

Digital Link Function

Can be used to connect the EFX-1000 to Pioneer's digital decks or DJM-1000 mixer.

Digital In/Out Terminal with

96 kHz/24-bit Sampling

Allows DJs to switch the digital output sampling frequency (44.1 kHz/48 kHz/96 kHz).

MIDI In/MIDI Out

DJs can use this to control the Clock signal of MIDI instruments, meaning the sounds from connected MIDI sources can be synchronised.

EFX-500/R

48 kHz/16-bit Sampling

Beat Effects

Use the Auto Beat Effect button to produce a choice of 5 effects linked to the beat of the audio.

Digital Jog Break

Producing new digital sounds on the spot, the Jog Dial controls 5 effects: Jet, Zip, Wah, Ring Modulation, and Fuzz.

3-Band Isolator

The high-quality 3-Band Equalizer (Hi, Mid, Low) cuts sounds up to $-\infty$ dB.



previous page



next page



index



specifications



configurations

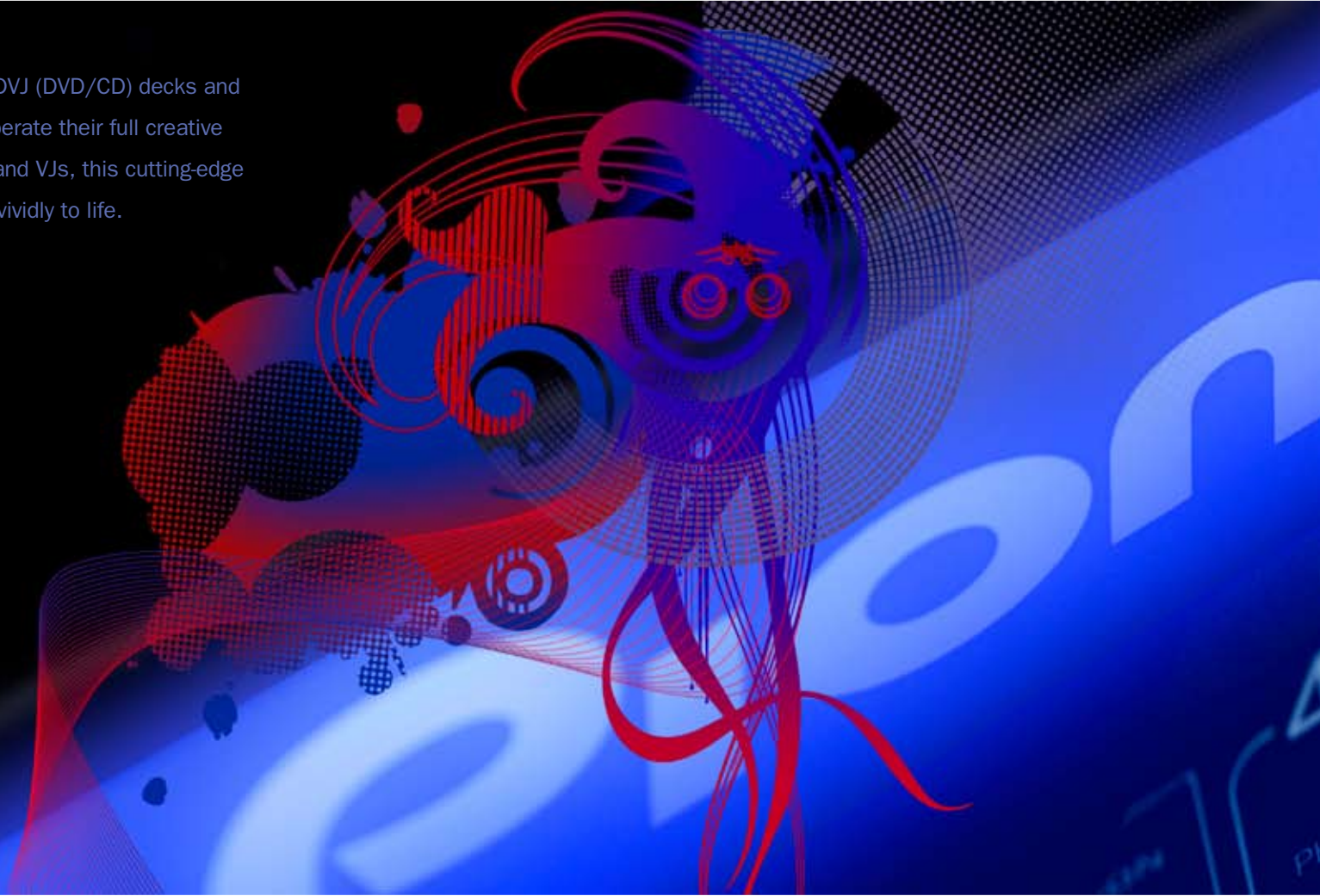


www.djsounds.com

The powerful alliance of Pioneer's revolutionary DVJ (DVD/CD) decks and SVM-1000 audio/video mixer allows artists to liberate their full creative potential. Blurring the boundaries between DJs and VJs, this cutting-edge series lets super-sensuous performances come vividly to life.

With a similar layout to the CDJ-1000MK3, the DVJ-1000 combines the capabilities of Pioneer's CDJ series with the ability to deliver sensational DVJ sets by synchronising audio and video elements of a show. The SVM-1000 mixer partners perfectly with the DVJs. Fusing several DJ and VJ products to deliver the ultimate state-of-art solution for synchronised AV manipulation.

Developed with input from leading DJ and VJ artists, the advanced DVJ/SVM series opens another dimension of creativity for all artists and their audiences.



previous page



next page



index



specifications



configurations



www.djsounds.com



Audio Visual Effects

DJs can now command synchronized sound and video effects, the effects can also be applied to the sound or video separately while being intuitively controlled on the impressive 11inch central LCD touch panel.

Beat Effects

The SVM automatically detects the tempo of the currently playing track allowing the application of 12 beat based effects like Filter and Phaser to either the sound, the visual or both. Once set, a further pattern can be applied such as Inverse, Edge and Hue substantially increasing the range of effect combinations available to the DJ.

Touch Effects

Selecting Touch effects will allow the DJ to directly control the AV effects in direct response to their finger movement on the SVM's large central LCD touch panel with effects like Ripple and Lens.

Text Effects

Text can be entered directly into the SVM using the built-in keyboard or by connecting a USB keyboard. Text can be displayed in synchronization with the track tempo whilst applying effects like Zoom or Crush.



previous page



next page



index



specifications



configurations



www.djsounds.com

DVJ-1000



- Compact Design
- Large, Bright Wave and Data Display
- CD, DVD & MP3 Compatible
- Standardised Jog Wheel with Feeling Adjust
- Built-in PAL & NTSC Converter
- Back & Forth Loop
- Preview Screen Output
(outputs additional data to preview screens for monitoring and includes easy MP3 folder navigation)



previous page



next page



index



specifications



configurations



www.djsounds.com

DVJ-1000

Digital DVD/CD Deck

Introducing Pioneer's new benchmark digital deck, the DVJ-1000. Incorporating the same heritage, operation and layout as the top end CDJ, the fully loaded DVJ-1000 adds the power of DVD into the mix.

DJs can perform audio-only sets or deliver sensational DVJ sets by synchronizing visuals and audio through DVD. Visuals can be manipulated as you would audio; so video scratching, hot cueing and the new 'back & forth' seamless looping feature bring new creative possibilities.

The DVJ-1000 sets a new benchmark for music portability – up to 1,000 MP3 tracks can be accessed on DVD-ROM – and provides the most advanced tool for working with this ever-popular format.

96 kHz/24-bit audio playback allows studios, producers and artists to output tracks in optimum clarity. When connected to Pioneer's digital mixers the DVJ-1000 delivers pure digital dance floor heaven.



previous page



next page



index



specifications



configurations



www.djsounds.com

CDJ-1000MK3



- Full MP3 Compatibility
- Adjustable Feel, Club Standard Jog Wheel
- Folder Search/CD Text
- High Resolution Advanced Wave Data
- Removable SD/MMC Memory
- Hot Loop/Hot Cue
- Wide Pitch Control
- Digital Out/Gold RCA



previous page



next page



index



specifications



configurations



www.djsounds.com

CDJ-1000MK3

Digital CD Deck with MP3

Fully equipped for the future of digital DJing and inspired by the input of world-renowned DJs, the ingenious CDJ-1000MK3 houses a host of new and refined 'feel-good' features.

Combining convenient MP3 compatibility, a fast Folder Search facility, enhanced presentation of track/wave data and an improved Jog Wheel with adjustable traction, the MK3s are designed to deliver the most advantageous digital DJ experience. With additional creative possibilities for live editing easily accessible via the new Hot Loop feature and with gold RCA connectors to maximise the high-fidelity sound, the CDJ-1000MK3s put your performance first.



previous page



next page



index



specifications



configurations



www.djsounds.com

CDJ-800MK2



- Full MP3 Compatibility
- Folder Search/CD Text
- Improved Display
- Super Fast Search
- Improved Auto Beat Loop
- 800 CD Memory
- Quick Return
- Wide Pitch Control
- Digital Out
- High-Quality, Club Standard Jog Wheel



previous page



next page



index



specifications



configurations



www.djsounds.com

CDJ-800MK2

Digital CD Deck with MP3

Designed with world-class DJs to advance performance and handling, the innovative second generation of CDJ-800s are stylishly tailored to extract the utmost creativity from the digital revolution.

The MK2s feature convenient MP3 compatibility, a Folder Search facility and an improved Jog Wheel. They allow DJs to create, cut and manipulate loops live, using the new Auto Beat Loop command and provide extra memory for storing Cue/Loop points. Supported by solid steel buttons and a metallic finish as well as brighter, clearer displays, the CDJ-800MK2s offer power, freedom and control.



previous page



next page



index



specifications



configurations



www.djsounds.com



Digital Media Playback via USB

MIDI Control via USB

New Illuminated Jog Wheel

New Scratch Jog Effects

New Beat Loop Divide

Hot Loop & Beat Loop

Compatible with Pioneer DJS Software



previous page



next page



index



specifications



configurations



www.djsounds.com

CDJ-400

Digital Deck with MP3 & USB

The CDJ-400 multi-source digital deck with USB, MP3 and MIDI control unites Pioneer's prolific club heritage with state-of-the-art technology. Never before has so much versatility and connectivity been available in a compact CDJ.

The captivating CDJ-400 offers the freshest Scratch Jog effects and a trio of other mind-expanding effects. The Loop Divide buttons rhythmically chop beats and a push-selection rotary scroll wheel supplies swift file access. MIDI compatibility with Pioneer's DJs and third party MP3 software, without the need of a soundcard, ensures that the CDJ-400 drives top-class club performance home.



previous page



next page



index



specifications



configurations



www.djsounds.com



- Digital Jog Break with Effects (Zip, Jet & Wah)
- Full MP3 Compatibility
- Hot Loop
- 4-Beat Auto Loop
- Loop Cutter
- Bright Dot-Matrix Display with Scrolling Text
- Headphone Out + Volume Adjust
- Digital Out
- Auto BPM Counter
- Real-Time Seamless Loop
- Quick Slot Load with Blue LED
- Text Mode



previous page



next page



index



specifications



configurations



www.djsounds.com

CDJ-200

Digital Deck with MP3

The CDJ-200 sets a new standard for MP3 compatible CD decks by combining pro-grade features and performance with eye-catching design and durability.

Building on Pioneer's reputation for technological pre-eminence, this compact player takes key elements from the Pro DJ range of industry standard professional CDJ players and introduces innovative features such as full MP3 compatibility, Hot Loops, Beat Loops and Pioneer's unique one button Beat Cutter. This technical brilliance is backed up by practicality – the unit is robust, compact and portable – ensuring that the CDJ-200 will appeal to both mobile and home DJs, bars and other installations where space could be limited.



previous page



next page



index



specifications



configurations



www.djsounds.com

MEP-7000 / SEP-C1



- Digital Media Playback & MIDI-Control Via USB
- Area-Colour OEL (Organic Electroluminescence) Display/4.3-Inch Colour LCD
- Scratch-Friendly Jog Wheel & wide range of Effects
- Auto Mix for Playback from the Playlist
- Library Function
- Pitch Bend Buttons
- Seamless Loop, Hot Loop & Memory Cue/Loop
- Auto BPM (Beats Per Minute) Counter
- Twin Digital Audio Outputs
- GUI & CDG Composite Video Output
- Legato Link Conversion

*1 MPEG-1 Audio Layer3, MPEG-2 Audio Layer3 LSF.

*2 Available only on USB storage device; WAV/AIFF recorded on CD/DVD media cannot be played.

*3 MEP-7000 can control DJs using version 1.6000 (download available from late April 2008). If you own the previous version, please download an update from Pioneer's site.



previous page



next page



index



specifications



configurations



www.djsounds.com

MEP-7000 / SEP-C1

Multi-Entertainment Player and Software Entertainment Controller

With the use of computers and external USB media now popular in the mobile DJ and bar markets, the MEP-7000 Multi-Entertainment Player and SEP-C1 Software Entertainment Controller provide a portable, professional solution.

Play (MP3*1/AAC/WAV/AIFF*2) files from various memory sources, plus music from (CD/CD-ROM/DVD-ROM/CD-G) discs. The SEP-C1 (also available as a separate unit) acts as a MIDI/HID controller for music software such as Pioneer DJS*3 and at the heart of the action is an innovative, video-friendly Area-Colour OEL display. Performance-wise, the MEP-7000 inherits features from the renowned CDJ series, including 3 Scratch Jog Effects and 3 Digital Jog Break Effects, controllable by the Touch Sensor Jog Wheel. For ultimate convenience, up to 20 Playlists can be setup and the Auto Mix feature applied with 4 Mix Modes to choose from. The addition of Karaoke CD-G disc playback with on screen video monitoring puts the MEP-7000 in a class of its own.



previous page



next page



index



specifications



configurations



www.djsounds.com

CMX / DJM-3000



- Jog Dial with Transparent (not rotating) Centre
- Master Tempo
- Hot Cue (sampler) & Hot Loops
- Auto Mix Play Function
- Auto Beat & Emergency Loop
- Scratch Mode
- Wave Display
- On-board Memory
- Digital Outputs



previous page



next page



index



specifications



configurations



www.djsounds.com

CMX / DJM-3000

4-Channel Mixer/Twin CD Player

Fun and functional, the CMX-3000 twin CD player is an accessible way for professional and home DJs alike to express their creativity through an astonishing set of features.

The Auto Mix Play function automatically mixes two tracks together at the press of a button, by BPM matching and correcting the tempos accordingly. DJs can also choose from four mix patterns (Cross-Fade, Cut, Echo and Zip) with the Mix Mode Select feature, and alter the time frame with Adjustable Mix Time.

The DJM-3000 has almost all the functions of the DJM-600 in a 19" rack-mount mixer format, boasting an array of effects and separate 3-Band EQs for each channel.



shown with optional rotary faders



previous page



next page



index



specifications



configurations



www.djsounds.com

SVM-1000

96
24



- 4-Channel Audio Visual Mixer
- 96 kHz/24-bit Sound
- 11" LCD Touch Panel Screen
- Innovative Audio Visual Effects
- Full Video Adjustment Control
- MIDI Assignable
- Illuminated Rear Display
- 19" Rack Mountable

sander kleinenberg



previous page



next page



index



specifications



configurations



www.djsounds.com

SVM-1000

4-Channel audio/video mixer with built in effects

The SVM-1000 fuses several DJ and VJ products to deliver the ultimate state-of-art solution for synchronised AV mixing.

When partnered with the DVJ-1000s, the SVM-1000 breathes new creativity into DJ and VJ sets at all levels. The intuitive layout combined with advanced touch screen technology provides the key to a powerful array of AV effect combinations, video monitoring and control. The USB and SD card inputs allow jpeg images to be mixed in, while a keyboard connection allows real-time text graphics.

With range-topping sound quality, multiple video blending technology and MIDI assignable controls, the SVM-1000 lets the spirit of super-sensuous performance truly come to life.



previous page



next page



index



specifications



configurations



www.djsounds.com

DJM-1000

96kHz
24bit



- 19" Rack-mount/Tabletop design
- 96 kHz/24-bit Digital Sampling
- New Sound, Visual & EFX Link for future products
- R-Core Power Transformer
- Rigid Anti-Vibration Chassis
- Cross & Line Fader Curve Adjustment
- 60mm Custom Alps Line Faders
- 2-Send/Return Channels with Pre, Post & Aux
- 3-Band Master Isolator ($-\infty$ to +6 dB)
- 2-Band Booth EQ (hi & low)
- Master Output Attenuator
- MIDI Out/MIDI Cross Fader
- Rotary Kit (optional)



previous page



next page



index



specifications



configurations



www.djsounds.com

DJM-1000

6-Channel Professional Series Digital Mixer

The DJM-1000 is a robust 19" professional installation-grade mixer that breaks exhilarating new ground in digital audio.

Delivering supreme levels of digital sound with a 96 kHz/24-bit sampling rate and 96 kHz/32-bit processing, the DJM-1000's input-output path allows for transparent signal processing when combined with Pioneer's CDJ and DVJ decks. Other indications of this mixer's huge potential include a capacity to digitise analogue input and the provision of an innovative means to introduce two EFX-1000s into the mix by the EFX Link or Send/Return Channels.

A true titan among mixers, its fusion of first-class digital audio and vast connectivity options makes the DJM-1000 a must-have for all professionals demanding uncompromised performance and flexibility.



previous page



next page



index



specifications



configurations



www.djsounds.com

DJM-800

96 kHz
24-bit



- 4-Channel, 96 kHz/24-bit Digital Mixer
- High-Fidelity Sound, 32-bit Sound Processor
- 61 Fully Assignable MIDI Controls
- 4 Sound Colour Effects
- 4 Digital Inputs
- 13 Beat Effects, Including Roll Sampler
- Large Bright Dot Matrix Display
- Rotary Kit (optional)



previous page



next page



index



specifications



configurations



www.djsounds.com

DJM-800

Fully Assignable MIDI Mixer

Pioneer's powerful new DJM-800 digital mixer puts immense connectivity and creative control right at your fingertips.

With first-class sonic fidelity, vast MIDI versatility and an innovative approach to harmonic mixing, the DJM-800 will improve the exciting techniques available to DJs around the world.

Loaded with an amazing array of features and jaw-dropping effects, its high-end 96 kHz/24-bit digital audio quality is complemented by 61 fully assignable MIDI controls, while its adjustable Sound Colour Effects include harmonic control of musical key changes. Designed for professional use in clubs and studios alike, the awe-inspiring DJM-800 offers creative freedom and complete digital control.



previous page



next page



index



specifications



configurations



www.djsounds.com

DJM-700

96kHz
24bit



»» TOM MIDDLETON

- 4 Channel, 96 kHz/24-bit Digital Mixer
- High Fidelity 32-bit Sound DSP
- New Effect Frequency Filter
- Roll Sampler
- 13 Innovative Beat Effects
- Fully MIDI Assignable with on/off control
- Also available in black



previous page



next page



index



specifications



configurations



www.djsounds.com

DJM-700

4-Channel Mixer

Inspired by the rich legacy of Pioneer's award-winning professional DJM series and designed for exploring new means of expression, the DJM-700 gives form and function with sophistication and simplicity.

The DJM-700 sets a new standard for quality mid-market mixers. This digital, fully MIDI assignable 4-channel mixer allows DJs to transmit unique musical flows using a formidable range of features. These include a world first DJ Effect Frequency Filter allowing elements of the music to be isolated for any one of the mixer's 13 Beat Effects. The mixer also offers a first class Rotary Filter, delivering exceptional high and low pass frequency control. All in a format that is already familiar to DJM lovers.



previous page



next page



index



specifications



configurations



www.djsounds.com

DJM-600/S



- Auto Beat Sampler
- Auto Beat Effector
- 8 Beat Effects
- Fader Start Play
- Adjustable Cross Fader Curve
- 3-Band EQ
- Auto BPM Counter
- Headphone Splits
(between assigned channels)



previous page



next page



index



specifications



configurations



www.djsounds.com

DJM-600/S

4-Channel Mixer

The versatile DJM-600 is one of the most popular mixers on the market. With an intuitive range of Beat Effects, an Auto BPM function and a multitude of channel and cross fader options, it is easy to understand why.

The mixer also works as a beat sampler, with recording and play modes. This means DJs can capture up to eight seconds of sound and play it manually, or use the Auto Loop Play to loop the sample seamlessly, while the Stretch Play feature can be used to manipulate the tempo of the sample.

Packed full of powerful effects and sampling functions, the highly durable DJM-600 remains a first-class choice for DJs the world over.

Available in black or silver finishes.



previous page



next page



index



specifications



configurations



www.djsounds.com

DJM-400



- 5-Bank, 4-Beat In-loop Sampler
- 7 Digital Beat Effects
- 3-Band EQ
- 2 Mic Input, Aux Settings
- Cross Fader Curve Adjustment
- Auto BPM Counter
- Beat Select Buttons
- 2-Channel 96 kHz/24-bit Digital Mixer



previous page



next page



index



specifications



configurations



www.djsounds.com

DJM-400

2-Channel Mixer with Effects

Pioneer's exciting new DJM-400 mixer allows you to enjoy the digital evolution in a compact form. The smallest mixer in Pioneer's range, it is perfectly portable and huge on performance, boasting outstanding audio quality.

Drawing on the digital heritage of Pioneer's larger mixers, the DJM-400 is designed as an ideal partner for the CDJ-200. The mixer's intelligent 96 kHz/24-bit sampler can store up to five banks of four beats, automatically matching them to digital beat effects. Effects like the Roll can be chopped and manipulated at will.

A highly impressive and versatile performer, the DJM-400 is guaranteed to boost your creative levels.



previous page



next page



index



specifications



configurations



www.djsounds.com



96 kHz/24-bit Digital Sampling

Beat & Rhythm Effects

Digital Jog Break

Jog Memory Play

Jog Break Meter

Signal Flow Switch

Input/Effect Output Level Meter & Control Knob

Digital Link Function

Digital In/Out Terminal with 96 kHz/24-bit Sampling



previous page



next page



index



specifications



configurations



www.djsounds.com

EFX-1000

Professional Series Digital Effector

Embodying the digital vision of leading DJs and club installers, the EFX-1000 is the world's first effects unit to deliver 96 kHz/24-bit sampling and 32-bit sound processing.

Uniting this incredible audio purity with mind-blowing effects (including Rhythm Effect and Digital Jog Effects), the unit boasts a Digital Link function for use with Pioneer's decks and mixers. A Digital In/Out terminal with 96 kHz/24-bit sampling also gives DJs the option of switching the output sampling frequency, while the MIDI In/Out port further advances connectivity options.

Extending the possibilities for the most extreme live performances by presenting the highest quality digital audio and effects, the outstanding EFX-1000 raises the bar for all professional effectors.



previous page



next page



index



specifications



configurations



www.djsounds.com

EFX-500/R



- Beat Effects
- Digital Jog Break
- 3-Band Isolator
- Line In/Line Out
- MIDI In/MIDI Out1
- 48 kHz/6-bit Sampling



previous page



next page



index



specifications



configurations



www.djsounds.com

EFX-500/R

Performance Effector

The EFX-500 is a red-hot effector that gives DJs easy access to an icy-cool selection of sounds for the most dynamic and challenging mixes.

The Auto BPM function links into five BPM effects (Delay, Echo, Pan, Flanger and Transformer), while the Digital Jog Break Dial offers instant control over five more effects (Jet, Zip, Wah, Ring and Fuzz).

With its potent range of powerful effects and impressive features, the EFX-500 provides DJs with endless scope for creativity in their sets and studio work.

EFX-500 also available in silver.



previous page



next page



index



specifications



configurations



www.djsounds.com

HDJ-1000



High-quality Closed Dynamic Headphones

External Noise Reduction

Wide Frequency Range

Light, Compact Folding Design

Swivel Mechanism

JAMBL ZABIELA



previous page



next page



index



specifications



configurations



www.djsounds.com

HDJ-1000

Professional DJ Headphones

Style and substance: Pioneer turns heads with these high-quality, cool looking HDJ-1000 headphones.

Created with the latest components and future-retro-styled, the HDJ-1000's are a firm favourite with the world's best DJs. These headphones use comfortable, well-insulated pads to eliminate external noise, while low-level input remains crystal clear. DJs can enjoy the purest clarity throughout the full frequency range and the deep bass register makes them ideal for use in clubs as well as studios. Light and flexible, with a built-in swivel mechanism and a compact folding design, they are also extremely portable and durable.

A perfect match of form and function, the HDJ-1000s define a new standard in the market for professional headphones.



previous page



next page



index



specifications



configurations



www.djsounds.com



- Internal Effects (based on the EFX-500)
- Fader or Rotary Mixing
- Complete Music Management
- Detailed Preferences
- Insert Hot Cues & Loops
- Future Updates



previous page



next page



index



specifications



configurations



www.djsounds.com

DJS MP3 DJ Mixing Software

Designed for both mobile and home use, DJS is Pioneer's new PC-based software solution catering for the growing number of DJs using MP3 files.

Bringing full-scale DJ mixing to PCs, with playability that is comparable to Pioneer's other Pro DJ products, DJS is as intuitive as the CDJ decks and DJM mixers – and even delivers many of the same features, including Hot Cues, Master Tempo and effects.

DJS now also utilises the CDJ-400 and SEP/MEP-7000 via USB connection as hardware controllers bringing even more convenience and computer-friendly features to the digital DJ.



previous page



next page



index



specifications



configurations



www.djsounds.com

DVD-V8000



- High Spec Components
- 19" Rack-Mountable Design
- Dust Proof
- Wide Range of Connections/Functionality
- Backlit LCD Panel



previous page



next page



index



specifications



configurations



www.djsounds.com

DVD-V8000

Industrial DVD-Video Player

Cast a professional eye over the DVD-V8000 and its thoroughbred genes are obvious:

With a rugged 19" rack-mountable design the DVD-V8000 houses a drive mechanism that's impervious to dust. The clear layout of the operating buttons allow for intuitive operation from the backlit LCD panel. The DVD-V8000 also boasts an extensive range of connectors that support a versatile range of applications.

High-end specifications are matched by exceptional video quality, confirming that the DVD-V8000 perfectly fuses looks and performance: an uncompromising partner for your professional video requirements.



previous page



next page



index



specifications



configurations



www.djsounds.com

ACCESSORIES

Pioneer's professional series of Pro DJ stands and flight cases are designed exclusively for their partnering products ensuring their long life and optimum performance.

The Pro DJ stands are a solid, space-saving and durable design that allows the product to dissipate heat when in use and the cables to be neatly managed. They also offer full height and angle adjustment with anti-vibration pads.

Pioneer Pro DJ stands are made up of two parts, the plates and brackets, which are sold separately.

Pioneer's high-quality flight cases offer extra protection for DJs on the move. Each case is designed with tough impact-resistant outer casing and with the lids removed, offer a quick and easy installation solution.

Stands

PRODJ-DVJ1000-PLATE	DVJ-1000
PRODJ-1000-PLATE	CDJ-1000MK3 (and earlier)
PRODJ-800-PLATE	CDJ-800MK2 (and earlier)
PRODJ-DVJX1-PLATE	DVJ-X1
PRODJ-EFX-PLATE	EFX-500
PRODJ-EFX1000-PLATE	EFX-1000
PRODJ-BRACKET	Required to hold all above plates

19" Rack-Mounts

DJM600-ADAPTER	DJM-600
DJM700-ADAPTER	DJM-700
DJM800-ADAPTER	DJM-800
DVD-V8000 BKT	DVD-V8000

Flight cases

PRO-420FLT	CDJ-200 x 2 + DJM-400
PRO-440FLT	CDJ-400 x 2 + DJM-400
PRO-2600-FLT	CDJ-1000 x 2 + DJM-600 / DJM-800
PRO-2200-FLT	CDJ-800 x 2 + DJM-600 / DJM-800
PRO-1000-FLT	CDJ-1000
PRO-800-FLT	CDJ-800
PRO-3000-FLT	CMX-3000 / DJM-3000

Mixer Rotary Kits

DJC-800RV	DJM-800
DJC-1000RV	DJM-1000
DJC-3000RV	DJM-3000



previous page



next page



index



specifications



configurations



www.djsounds.com



previous page



next page



index



specifications



configurations



www.djsounds.com

TYPICAL CONFIGURATIONS



Combine these suggested Pioneer Pro DJ products for the best possible sound quality and creative performance.

See www.djsounds.com for your nearest dealer and to gain specialist information on your desired set-up.



CDJ-1000MK3s with DJM-800 and EFX-1000



previous page



next page



index



specifications



configurations



www.djsounds.com



DVJ-1000s with SVM-1000



CDJ-800MK2s with DJM-700 and EFX-500R



CDJ-400s with DJM-400



CDJ-200s with DJM-400



previous page



next page



index



specifications



configurations



www.djsounds.com

SPECIFICATIONS

DVJ-1000



Power Requirements	AC 220 ~ 240 V, 50/60 Hz
Power Consumption	40 W
Weight	5.4 kg
Dimensions (W x D x H)	320 x 408 x 109 mm
Frequency Response	4 Hz ~ 20 kHz
Signal-to-Noise Ratio	115 dB or more (JEITA)
Total Harmonic Distortion	0.004 % (JEITA)

Full specs available here

CDJ-1000MK3



Power Requirements	AC 220 ~ 240 V, 50/60 Hz
Power Consumption	27 W
Weight	4.2 kg
Dimensions (W x D x H)	320 x 370 x 105 mm
Frequency Response	4 Hz ~ 20 kHz
Signal-to-Noise Ratio	115 dB or more (JEITA)
Total Harmonic Distortion	0.006 % (JEITA)

Full specs available here

CDJ-800MK2



Power Requirements	AC 220 ~ 240 V, 50/60 Hz
Power Consumption	24 W
Weight	4.0 kg
Dimensions (W x D x H)	305 x 344.1 x 108.5 mm
Frequency Response	4 Hz ~ 20 kHz
Signal-to-Noise Ratio	115 dB or more (JEITA)
Total Harmonic Distortion	0.006 % (JEITA)

Full specs available here

CDJ-400



Power Requirements	AC 220 ~ 240V, 50 Hz/60 Hz
Power Consumption	19 W
Weight	2.7 kg
Dimensions (W x D x H)	217.9 x 296.3 x 107.5 mm
Frequency Response	4 Hz ~ 20 kHz
Signal-to-Noise Ratio	115 dB or more (JEITA)
Total Harmonic Distortion	0.006 % (JEITA)

Full specs available here



previous page



next page



index



specifications



configurations



www.djsounds.com

CDJ-200



Power Requirements	AC 220 ~ 240 V, 50/60 Hz
Power Consumption	1.6 W
Weight	3.2 kg
Dimensions (W x D x H)	216 x 292 x 99.5 mm
Frequency Response	4 Hz ~ 20 kHz
Signal-to-Noise Ratio	110 dB or more (JEITA)
Total Harmonic Distortion	0.006% (JEITA)

Full specs available here

MEP-7000 / SEP-C1



	MEP-7000	SEP-C1
Power Requirements	AC 220 ~ 240 V, 50 Hz	USB bus powered
Dimensions (W x D x H)	483 x 325 x 91 mm (inc. foot)	483 x 84 x 133 mm
Weight	6.1 kg	1.7 kg
Frequency Response	4 Hz ~ 20 kHz	
Signal-to-Noise Ratio	115 dB or more (JEITA)	
Tot. Harmonic Distortion	0.006% (EIA)	
Power Consumption	33 W	

Full specs available here

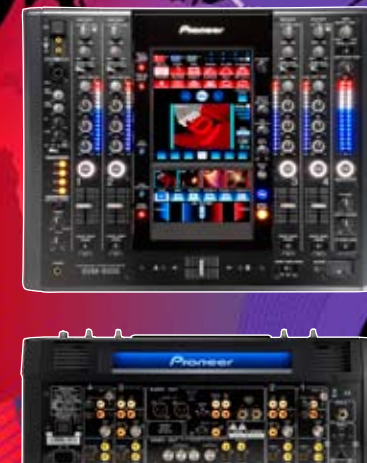
CMX / DJM-3000



	CMX-3000	DJM-3000
Power Requirements	AC 220 ~ 240 V, 50/60 Hz	AC:220 ~ 240V
Power Consumption	49 W	40W or less
Weight	Controller : 2.0 kg Player : 5.6 kg	6.9 kg
Dimensions (W x D x H)	Controller: 482 x 82 x 132 mm Player: 482 x 252 x 90 mm	482 x 220 x 107 mm
Frequency Response	4 Hz ~ 20 kHz	20 Hz ~ 20 kHz (CD)
Signal-to-Noise Ratio	Line: 87dB Phono: 77dB Mic: 69dB	87 dB (CD)
Tot. Harmonic Distortion	0.006% (EIA)	0.02% or less (CD)

Full specs available here

SVM-1000



Sampling Rate	96 kHz/24 bit
Power Requirements	AC 220 ~ 240V (50/60 Hz)
Power Consumption	58 W
Weight	12.8 kg
Dimensions (W x D x H)	500 x 412 x 202 mm
Frequency Response	20 Hz ~ 20 kHz
Signal-to-Noise Ratio	105 dB (LINE)
Total Harmonic Distortion	0.005% or less

Full specs available here



previous page



next page



index



specifications



configurations



www.djsounds.com

SPECIFICATIONS

DJM-1000



Sampling Rate	96 kHz/24 bit
Power Requirements	AC 220 ~ 240 V, 50/60 Hz
Power Consumption	62 W
Weight	12.1 kg
Dimensions (W x D x H)	482 x 359.3 x 187.5 mm
Frequency Response	20 Hz ~ 20 kHz
Signal-to-Noise Ratio	Line: 104dB Phono: 88dB Mic: 84dB
Total Harmonic Distortion	0.005%

Full specs available here

DJM-800



Sampling Rate	96 kHz/24 bit
Power Requirements	AC 220 ~ 240 V, 50/60 Hz
Power Consumption	30 W
Weight	7.5 kg
Dimensions (W x D x H)	320 x 381 x 108 mm
Frequency Response	20 Hz ~ 20 kHz
Signal-to-Noise Ratio	Line: 106dB Phono: 88dB Mic: 84dB
Total Harmonic Distortion	0.005% or less

Full specs available here

DJM-700



Sampling Rate	96 kHz/24 bit
Power Requirements	AC 220 ~ 240V, 50/60 Hz
Power Consumption	33 W
Weight	6.6 kg
Dimensions (W x D x H)	320 x 378.4 x 107.9 mm
Frequency Response	20 Hz ~ 20 kHz
Signal-to-Noise Ratio	Line: 104dB Phono: 94dB Mic: 82dB
Total Harmonic Distortion	0.005%

Full specs available here

DJM-600/S



Power Requirements	AC 220 ~ 240 V, 50/60 Hz
Power Consumption	34 W
Weight	6.6 kg
Dimensions (W x D x H)	320 x 107 x 372 mm
Frequency Response	20 Hz ~ 20 kHz (CD)
Signal-to-Noise Ratio	Line: 87dB Phono: 77dB Mic: 69dB
Total Harmonic Distortion	0.02% or less

Full specs available here



previous page



next page



index



specifications



configurations



www.djsounds.com

DJM-400



Sampling Rate	96 kHz/24 bit
Power Requirements	AC 220 ~ 240 V, 50/60 Hz
Power Consumption	13 W
Weight	3.2 kg
Dimensions (W x D x H)	223 x 304.7 x 106.6 mm
Frequency Response	20 Hz ~ 20 kHz
Signal-to-Noise Ratio	Line: 97dB Phono: 82dB Mic: 78dB
Total Harmonic Distortion	0.007% or less

Full specs available here

EFX-1000



Sampling Rate	96 kHz
Power Requirements	AC 220 ~ 240 V, 50/60 Hz
Power Consumption	14 W
Weight	2.4 kg
Dimensions (W x D x H)	320 x 234 x 101 mm
Frequency Response	20 Hz ~ 28 kHz
Signal-to-Noise Ratio	83 dB
Total Harmonic Distortion	0.007% or less

Full specs available here

HDJ-1000



Frequency Range	5 ~ 30,000 Hz
Impedance	40 Ω
Maximum Input	3,500 mW
Output Sound Level	107 dB/mW
Unit Type	50 mm Dome
Weight	270 g (Excluding Cord)

Full specs available here

DVD-V8000



Format	DVD-Video, Video-CD and CD-DA
Power Consumption	23 W (Playback), 0.8 W (Standby)
Weight	5.3 kg
Dimensions (W x H x D)	420 x 86.2 x 309.2 mm
Operating Temperature	+5°C to +35°C, +41°F to 95°F
Operating Humidity	5% to 85% (no condensation)
Playable Discs	DVD-Video (PAL/NTSC), DVD-R/RW Video Mode (PAL/NTSC), DVD-RW VR mode (PAL/NTSC, CPRM compliant), Dual layer DVD-R Video mode (PAL/NTSC), CD-Audio, CDR, CDRW
Video Signal	DVI-D, Video, S-Video and Component Video output
Audio Output	Analog RCA, Digital RCA & Optical x 1
Other Connectors	RS-232C D-sub 15-pin Female x 1 RS-232C D-sub 9-pin Male x 1 Extended Terminal D-sub 15-pin Female x 1 Mouse/Memory USB (front 2, rear 1)

Full specs available here



previous page



next page



index



specifications



configurations



www.djsounds.com

Pioneer GB Ltd
Hollybush Hill, Stoke Poges
Slough, SL2 4QP
UNITED KINGDOM
Tel: +44 (0) 1753 789789

Pioneer Electronics Deutschland GmbH
Hans Martin Schleyerstrasse 35
D - 47877 Willich
GERMANY
Tel: +49 21 54 9130

Pioneer France S.A.S.
6, Avenue de Marais
F - 95816 Argenteuil Cedex
FRANCE
Tel: +33 (0) 13996 6000

Pioneer Benelux B.V.
Versterkerstraat 10
1322 AP Almere
THE NETHERLANDS
Tel: +31 (0) 365 387 777

Pioneer Italy S.P.A.
Via Roberto Lepetit 8
20020 Lainate - Milano
ITALIA
Tel: +39 (0) 293911

Pioneer Electronics Iberica S.A.
Avenida Salvatella 122
08210 Barbera del Valles (Barcelona)
SPAIN
Tel: +34 937 399 900

Pioneer Scandinavia A.B.
Nyckelvägen 2
142 82 Trångsund
SWEDEN
Tel: +46 (0) 8609 9100

Pioneer Europe N.V. (Belgium)
Direct Sales Division (Eastern Europe)
Haven 1087 - Keetberglaan 1
9120 Melsele
BELGIUM
Tel: +32 (0) 3570 0511

Pioneer Russia
Moscow Representative Office
6th floor ul.Pravdy 26
125040, Moscow
RUSSIA
Tel: +7 (495) 956 8901