

# LED DISPLAY SYSTEM

# TABLE OF CONTENTS

Key Features .....	1
Keyboard layout.....	2
IR remote operation instruction diagram.....	3



## IR SECTION

Getting started.....	4
Programming a simple message	
Programming alternate characters.....	5
Display letters, numbers, symbols, European, Pre-leading messages, Graphics page.	
Attention getting features.....	6-7
Selecting text colors, font sizes.	
Advanced features.....	7-9
Special effects schedule display Display Date&Time, Running combined pages, Resetting system, Setting ID address, Setting brightness, Setting system clock.	



## SOFTWARE SECTION

System Requirements and Running the setup.....	10-12
The Software Screen.....	12
Set-Up.....	12
Connecting the cable	
The menu bar.....	13-15
Menu Bar functions and features, European char table.	
Sending a message.....	15
Sending a message to sign after Set-Up	
The bmp graphic editor.....	16-19
Editing and displaying graphics, Color window, Edit button, Edit function, Display zoom in or out, Color selection	
LAN communication.....	19-22
Setting up the RSC and TMC to send messages via the LAN	

# TABLE OF CONTENTS

Internet e-mail communication. . . . .	22-23
Setting up the RTC and TMC to send messages via the Internet.	

## ⓘ **QUICK REFERENCE SECTION** . . . . . 23

Color code table. . . . .	23
Font size table. . . . .	23
European table. . . . .	24
Special effects table. . . . .	24
Display effect, speed, time. . . . .	25
Help section. . . . .	26-27

# **PLEASE READ BEFORE STARTING**

This manual contains three overall sections:



## **IR Remote Section**

Programming your new sign using the included IR Remote Keyboard



## **Software Section**

Programming your new sign using the included Software



## **Quick Reference Section**

Corresponding Codes for IR Remote Keyboard



## **Help Section**

Most commonly asked questions, troubleshooting, contacting technical support

The step-by-step process of explanation will help you accomplish a few examples before starting on your own.

## **KEY FEATURES**

### **COLORS AND FONT SIZES**

By combining colors and different font sizes, the LED display will allow you to advertise and capture your customers attention like never before.

### **VISUAL TEXT EFFECTS AND GRAPHICS**

With such functions as cycling, scroll-up, scroll down, and overlap, advertising has never been so much fun! powerful graphics editor can create your own to make your messages stand out!

### **DEPENDABILITY AND DURABILITY**

All of our signs are manufactured under strict quality controls for years of problem free operation. The aluminum casing minimizes interference and assures reliability wherever it is installed.

### **LARGE MEMORY AND MESSAGE STORAGE**

The led display system is equipped with 32K of memory with the capability to retain your programmed information for up to 30 days when not used.

\* Internal back-up battery.

### **SCHEDULE DISPLAY FUNCTION**

To display different message with different time/date. One touch easy operation press one key to display date and time or pre-loading message.

Led display system Software for use with Windows 98 and higher  
Please see the Software Section, for all the features!

# KEYBOARD LAYOUT

## INFRA-RED REMOTE KEYBOARD LAYOUT



**Command Keys**  
Keys located in the yellow area

**Character Keys**  
Keys outside the yellow area  
Upper Case Keys (26) A-Z  
Lower Case Keys (26) a-z  
Numeric (10) 0-9  
Symbols (29) !; ...  
European (64) Å

Please refer to page 6-7 for instructions on displaying European characters

**NOTE:**

IR keyboard must be pointed at the built-in infra-red sensor located on the top left hand corner of the sign.

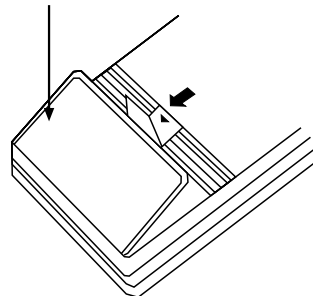
Optimum operating distance should be around 5' to 30'.

DO NOT subject the remote keyboard to impact, water or excessive humidity.

The remote keyboard operates on two R6 (UM/SUM-3, AA) or AAA 1.5-volt batteries. Batteries not included.

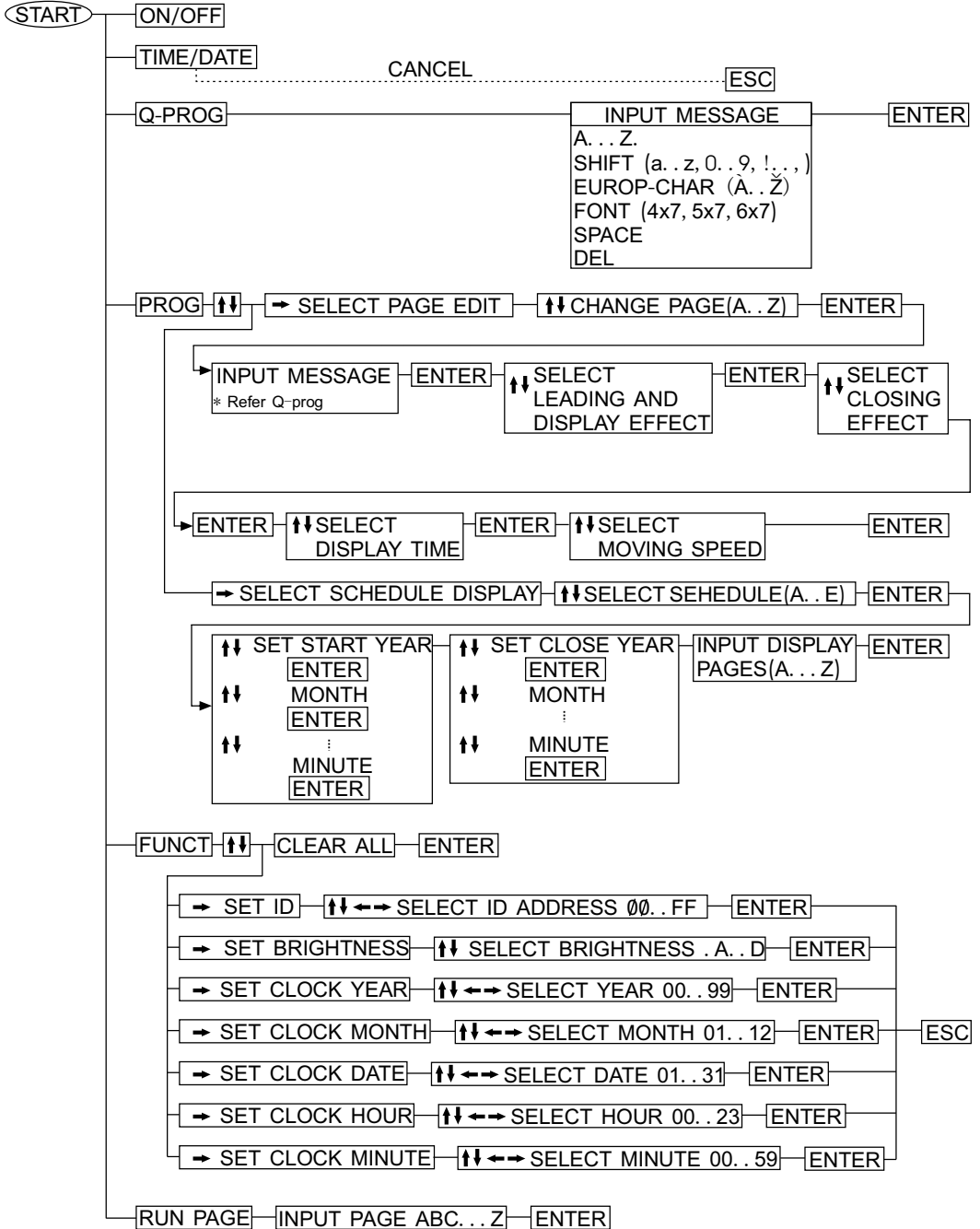
**Inserting Batteries**

Battery Cover





# IR REMOTE OPERATION INSTRUCTION DIAGRAM



\*\* For 2 line display only.



## **IR SECTION**

# **GETTING STARTED BY REMOTE CONTROL**

### **PRESS **ON/OFF****

The sign will display on and off

### **PRESS **TIME/DATE** - - **ESC** (OFF)**

To display the time and date message only, press **ESC** to cancel time/date display function.

### **Programming a simple message with **Q-PROG****

Let's practice how to program a simple message by following the steps below. Make sure your sign is currently running a message.

<u>Press</u>	<u>Display</u>	<u>Description</u>
1. <b>Q-PROG</b>		Stop the sign and wait for message input
2. <b>H E L L O SPACE</b>	HELLO	Key-in "HELLO" using the character keys
<b>TIP:</b> If you key-in a wrong character, press <b>DEL</b> to delete the last character entered.		
3. <b>ENTRE</b>	HELLO HELLO	Runs the message you programmed



## **PROGRAMMING ALTERNATE CHARACTERS**

### **Display lower-case Letters, numbers, and symbols using the**

**SHIFT** key.

Please take notice of the INDICATION BLOCK, which appears on the left hand corner of the sign whenever the **SHIFT** key is pressed in the following steps.

1. Press **Q-PROG** to stop the sign. and program a message
2. Press **A** to display the letter" A".
3. Press the **SHIFT** key once. Now press any one of the letter character keys on the IR Remote. character keys active (**lower-case mode**).
4. Press **SHIFT** again. Now press any one of the white number character keys on the IR Remote. white character keys active (**numerical mode**).
5. Press the **SHIFT** key again. Now press any one of the green symbols character keys on the IR Remote. green character keys active (**symbols mode**).
6. Press **SHIFT** again to return you to the upper-case mode. Press any letter key to verify that you are back in the upper-case mode.

**NOTE:** Upper-Case mode is the default selection when beginning to program. Once you press the **SHIFT** key, you are no longer in the upper-case mode. Follow steps 3 - 6 to toggle between modes.

7. Press **ENTER** to run your message.

### **Displaying European characters using the **EUROP-CHAR** key.**

1. Press **Q-PROG** to stop the sign. and program a message.
2. Press **A** to display the letter "A".
3. Now press the **EUROP-CHAR** key. As you will notice, the letter "A" has now changed its shape to the European letter. Continue to press the **EUROP-CHAR** key until you reach the European style "A" of your choice.

**TIP:** To revert back to the normal character, continue to press **EUROP-CHAR**. Also, you can press any letter at any time to continue to type normal characters.

4. Following previous steps 2 and 3, try to display the European character for the letter "U".
5. Press **ENTER** to run your message.

## **PROGRAMMING ALTERNATE CHARACTERS**

### **Displaying European characters in lower-case using the and **SHIFT** **EUROP-CHAR** key.**

1. Press **Q-PROG** to stop the sign. Press and program a message.
2. Press the **SHIFT** key once to go into the lower-case mode. Remember, the **SHIFT** key toggles you from 4 different modes. Upper case, lower-case, numerical, and symbols mode.
3. Now press **C** to display the letter "C" in lower-case.
4. Now press the **EUROP-CHAR** key. As you will notice, the letter "c" has now changed its shape to the European.
5. While staying in the lower-case mode, try to display the European character for the letter "o".
6. Press **ENTER** to run your message.

**NOTE:** There are 64 European characters that you can choose from. Please refer to the Quick Reference Guide for the European Characters Table and corresponding letters.

**TIP :** Use the letter "G" with **EUROP-CHAR** to display some Greek characters.





## **ATTENTION GETTING FEATURES**

### **Displaying pre-loading message or graphics page.**

Let's say you had pre-loaded a message to page e and you wanted to display

<u>Press</u>	<u>Display</u>	<u>Description</u>
1. <b>RUN-PAGE</b>	STOP MODE	Stops the sign and wait page data
2. <b>E</b>	(PG: E)	Display PAGE E
3. <b>ENTER</b>		Runs your message

**NOTE** : There are 26 pages can pre-loading message that you can select to display from A To Z.

### **Link display pre-loading message**

<u>Press</u>	<u>Display</u>	<u>Description</u>
1. <b>RUN-PAGE</b>	STOP MODE	STOP AND WAIT PAGE DATA
2. <b>A B E</b>	(PG:A,B,E)	DISPLAY PAGE A,B,E
3. <b>ENTER</b>		RUNS YOUR MESSAGE.



## **ATTENTION GETTING FEATURES**

### **Using the **COLOR** key to select a text color.**

1. Press **Q-PROG** to stop the sign and program a message.
2. Press **S|U** to display the letter.
3. Press the **COLOR** key. as you will notice "SU" have now changed to different color.
4. Now press **COLOR** key again to view the different text colors. Once you see the color you wish to use, Your color has now been selected. The color you select will stay active until another color is chosen.
5. Key in the word "SUCCESS".
6. Press **ENTER** to run your message.

**NOTE:** Please refer to the quick reference section for the color table.

### **Using the **FONT** key to select font sizes.**

1. Press **Q-PROG** to stop the sign and program a message.
2. Press **A|B** to display the letter.
3. Press the **FONT** key, as you will notice "AB" have now changed to different font.
4. Now press the **FONT** key again to view the different font sizes. Once you see the font size you which to use. Your font size has now been selected. The font you select will stay active until another font is chosen.

5. Key in the word "ABLE".
6. Press **ENTER** to run your message.

**NOTE :** There are many font sizes that you can select from. Please refer to the **Quick Reference Section**, for the Font Size Table.

## **ADVANCED FEATURES**

### **Adding special effects to your message using the **PROG** key.**

Now the real fun begins! Let's program a message using the effect

1. Press **PROG** to program a message.
2. Press **↓** select page edit function.
3. Press **→** to select PAGE A. (Total 26 page can be selected from A..Z)
4. Press **↑** **↓** to program PAGE A. The sign will read: (PAG: A)
5. Press the **ENTER** to edit PAGE A
6. Key-in the word "COOL".
7. Press the **ENTER** The Sign will wait for effect input.
8. Now press the **↑** **↓** keys to scroll through the various leading and display effect.
9. Press **ENTER** when you confirm the effect selection.
10. Press **↑** **↓** keys to scroll through the closing effect.
11. Press **ENTER** when you confirm the effect selection.
12. Press **↑** **↓** keys to select the display time.
13. Press **ENTER** to confirm the display time.
14. press **↑** **↓** keys to select leading and closing effect moving speed from "0..4".
15. Press **ENTER** when you confirm.

**NOTE :** There are many effects that you can select from. Please refer to **quick Reference Guide** for the Effects Table and corresponding letters.

### **Adding schedule display using the **PROG** key**

1. Press **PROG** to stop the display.
2. Press **↓** **↓** to program schedule display.
3. Press **→** to enter the schedule selection.
4. Press **↑** to set up the schedule display time. max 5 schedule can be set up from A to E.
5. Press **ENTER** to confirm schedule timer selection.
6. Press **→** **←** to select starting year field.
7. Press **↑** **↓** to edit the year.
8. Press **ENTER** to confirm year input and go to start, month input.
9. Press **→** **←** to select starting month field.
10. Press **↑** **↓** to edit the month.
11. Press **ENTER** to confirm month input and goto start date input.
12. Press **→** **←** to select starting date field.

13. Press **↑** **↓** to edit the date.
14. Press **ENTER** to confirm date input and goto start hour input.
15. Press **→** **←** to select starting hour field.
16. Press **↑** **↓** to edit the hour.
17. Press **ENTER** to confirm hour input and goto start minute input.
18. Press **→** **←** to select starting minute field.
19. Press **↑** **↓** to edit the minute.
20. Press **ENTER** to confirm minute input and goto closing year input.
21. Repeat step 6 to 20 to complete the closing timer set up and you will see "1\*1".
22. Press characters key A,B,C...Z to input display page for the schedule.  
\* Press **DEL** if input is wrong.
23. Press **ENTER** to confirm the schedule set up.  
\* There are max 5 display schedule from A to E can be set. Please repeat step 1 to 23 to complete the next schedule setting.  
\* If you want to cancel the schedule display, please refer "resetting system using the **FUNCT** key " procedure.

## **ADVANCED FEATURES**

### **Displaying the time and date using the **TIME/DATE** key.**

1. Press the **TIME/DATE** key to ENTER  
the date/time display mode, date & time will display alternatively for 3 second.

### **Cancel display the time and date using the **ESC** key.**

1. Press **ESC** and wait 3 sec.  
the display will back to normal message display.

### **Running combined Pages using the **RUN PAGE** key.**

This feature allows you to link up to 26 pages together as one long message. Remember to have your messages programmed before setting this feature.

1. Press **RUN PAGE** to stop the sign.
2. Press the **A to Z** key. to select the 'select run' pages, press ENTER to confirm
3. Key in the pages **A** **B** **C** to run the page link A and B and C.
4. Key in **ENTER** to run message.

### **Resetting system using the **FUNCT** key**

\* Any time you can press **ESC** to skip the set up process.

1. Press **FUNCT** to enter the set up function
2. Press **↓** key select "clear all Y?"
3. Press **ENTER** key.

## Setting id address using the **FUNCT** key

1. Press **FUNCT** to enter set up function
2. Press **↓ ↓** key to select "ADD00"
3. Press **→ ←** to select the address field
4. Press **↑ ↓** to edit the address from 00 to ZZ
5. Press **ENTER** to confirm address set up.
6. Press **ESC** to return to normal display

\*Address ID set up only for more than one display sign connect with one data cable. That the data can be separated send to the display from PC with ID address.

## Setting brightness using the **FUNCT** key

1. Press **FUNCT** to enter set up function
2. Press **↓ ↓ ↓** to brightness set up function
3. Press **→** to select brightness field.
4. Press **↑ ↓** to edit brightness level from high to low "A..D".
5. Press **ENTER** to confirm brightness set up.
6. Press **ESC** to return to normal display

## **ADVANCED FEATURES**

### Setting system clock using the **FUNCT** key.

1. Press **FUNCT** to enter set up function
2. Press **↓ ↓ ↓ ↓** to set up year data
3. Press **→ ←** to select the year field.
4. Press **↑ ↓** to edit the year data.
5. Press **ENTER** to confirm year setting.
6. Press **↓** to set up month data.
7. Press **→ ←** to select the month field.
8. Press **↑ ↓** to edit the month data.
9. Press **ENTER** to confirm month setting.
10. Press **↓** to set up date data.
11. Press **→ ←** to select the date field.
12. Press **↑ ↓** to edit the date data.
13. Press **ENTER** to confirm date setting.
14. Press **↓** to set up hour data.
15. Press **→ ←** to select the hour field.
16. Press **↑ ↓** to edit the hour setting.
17. Press **ENTER** to confirm hour setting.
18. Press **↓** to setup minute data.
19. Press **→ ←** to select the minute field.
20. Press **↑ ↓** to edit the minute data.
21. Press **ENTER** to confirm minute setting.
22. Press **ESC** back to normal message display.

## **SOFTWARE SECTION**

### PC system required

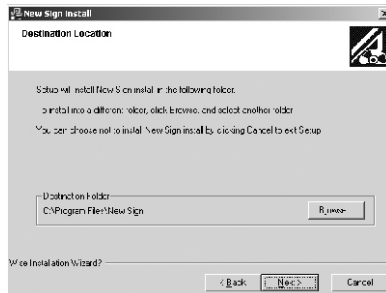
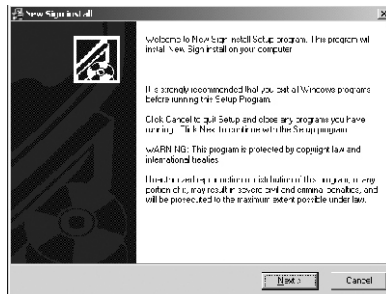
Operating System: Win98/Win me/Win NT/ Win 2000/Win XP  
CPU: Intel Pentium 166 or above  
RAM: 32M or above  
Monitor: VGA or higher  
Serial Output: RS232 port

### Software installation instructions

Insert the LED Display System disk into your CD-ROM drive. That will auto-run and the first screen comes up. Click INSTALL to go installation. Choose READ ME to show you the required system. EXIT will quit the installation.

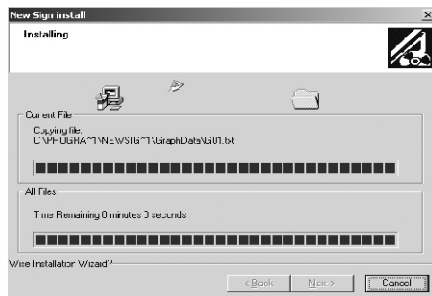
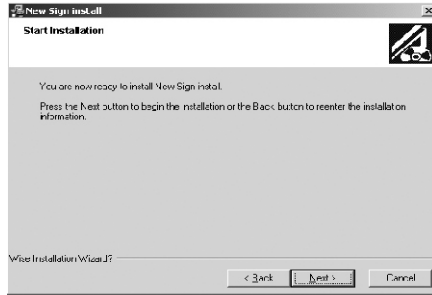


Click INSTALL to go ahead the installation and continue the  
Choose Next to continue, Click  
BROWSE to select the directory to install the program. The system  
preset is C:\Program Files\New sign.

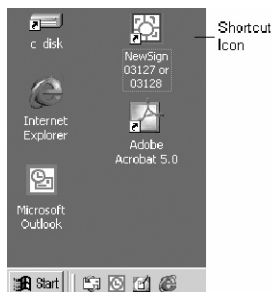


Click NEXT to keep on installation

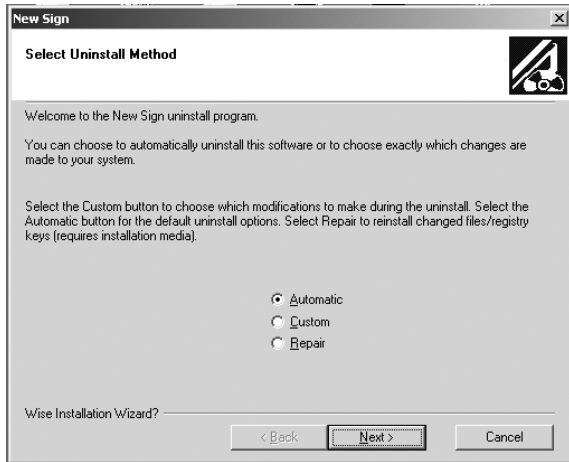
Choose NEXT to run the file installation to copy the file to your PC hard disk. Choose CANCEL to quit installation program or BACK to change the directory setting.



After copying the file is complete, click on Finish. Finish the installation, and shortcut icon for quick start will be on the desktop screen. And simultaneously create DIRECTORY in your PC program group.

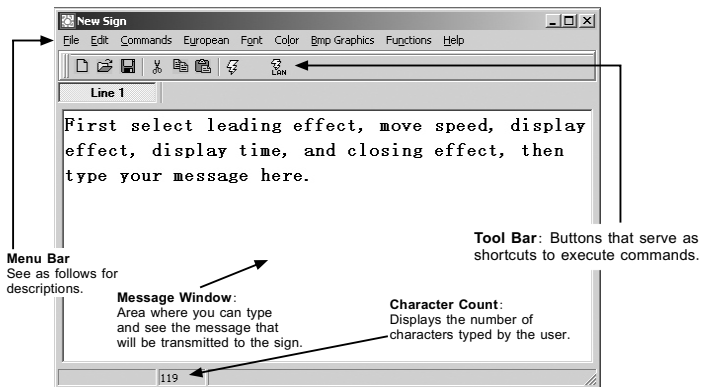


If you want to uninstall the system, just double-click the unwise.exe at the Program Group\ New Sign.



Select Automatic and click NEXT. The program will automatically uninstall.

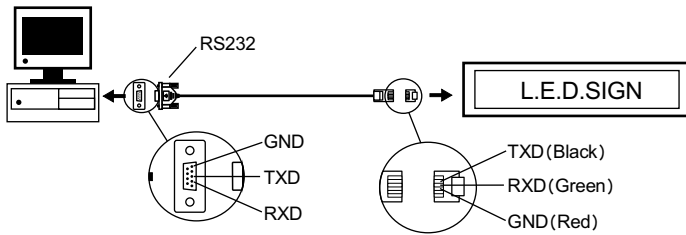
## **SOFTWARE SCREEN**



## **SET-UP**





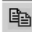
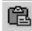


### Connecting the cable

1. Connect the Phone Clip end of the Phone Type Cable to the sign.
2. On the back of your computer, identify a COM PORT. If you have trouble locating a COM PORT on your computer, please reference your computer user manual or contact the manufacturer of your computer.
3. Connect the 9-Pin connector end to the COM PORT you will be using. If the 9-pin connector is not connected to the correct COM PORT, computer communication to your sign will not work.



RS232	PHONE JACK
PIN2	RXD (Green)
PIN3	TXD (Black)
PIN5	GND (Red)

## Toolbar

-  Opens a new Message Window.
-  Opens an existing File.
-  Saves the current message in the Message Window.
-  Cut the highlighted selection and put it on the clipboard.
-  Copy the highlighted selection and put it on the clipboard.
-  Paste the contents of the clipboard.
-  Sends the message in the Message Window to the sign.
-  Sends the message through LAN.

## THE MENU BAR

### File

- New : opens a new window.
- Open : opens an existing file.
- Save : saves the file currently open.
- Set Comm : allows you to set the communication settings.
- Exit : exit the software program.

### Edit

- Cut : Cut the highlighted selection and put it on the clipboard.
- Copy : Copy the highlighted selection and put it on the clipboard.
- Paste : Paste the contents of the clipboard onto the active document.
- Delete : Use this command to remove selected content from the Message Window.

### Commands

- Leading : How the text will appear .
- Speed : Control the leading and closing moving speed
- Display effect : How the text will display.
- Display time : How long the message display.
- Closing : How the text will disappear .
- Special : Insert the TIME, DATE, a "BEEP".