

1

2

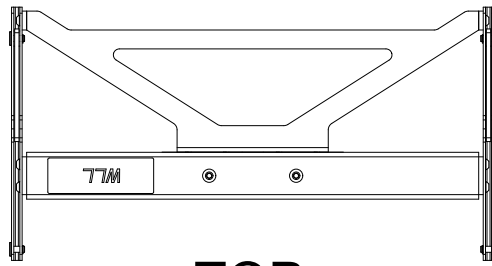
3

4

NOTES:

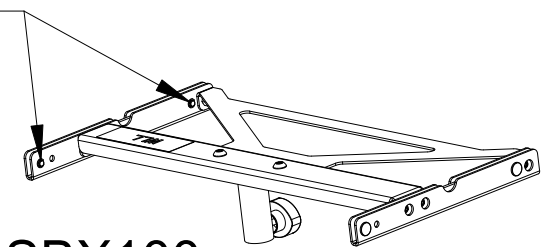
- 1. WEIGHT APPROX: 11 lb [5.0 kg]
- 2. SHIPPING WEIGHT APPROX: 17 lb [7.7 kg]

REV	CHANGE NUMBER	DATE
A	ECOWH11660	1/25/17

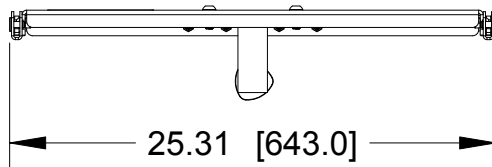


TOP

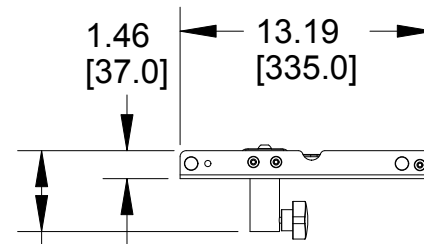
4X PROPRIETARY RIGGING SYSTEM



SBX100

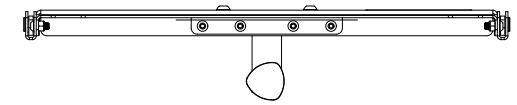


FRONT

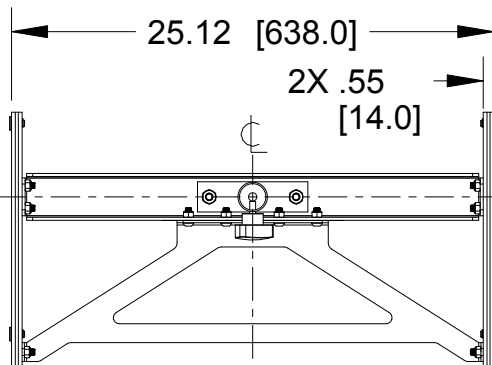


4.21 [107.0]

RIGHT SIDE DIMENSIONS APPLY TO BOTH SIDES

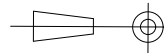


BACK



BOTTOM

THIRD ANGLE PROJECTION



THE INFORMATION CONTAINED HEREIN IS PROPRIETARY AND CONFIDENTIAL PROPERTY OF LOUD TECHNOLOGIES, INC. ALL RIGHTS RESERVED

UNLESS OTHERWISE SPECIFIED: ALL DIMENSIONS ARE IN INCHES DUAL [MM] DIMENSIONS FOR REF ONLY

TOLERANCE IN INCHES LINEAR ± 0.13 in / ± 3.3 mm ANGLES ± 1°

(X.XX) = REF DIMS NO TOLERANCE IMPLIED

TSC = THEORETICAL SHARP CORNER

DIMENSIONS ACROSS CENTERLINES TO BE SYMMETRICAL

EAW www.eaw.com

TITLE:

DWG CUSTOMER SBX100

A

SHEET 1 OF 1

SCALE: 0.100

DRAWING NUMBER:

2047356-CD

REVISION:

A

1

2

3

4

PRO ENGINEER