



**351.1833 CCTV Security 4 Cam Wireless
NVR kit. User Manual**



**User Manual
Handleiding
Betriebsanleitung**

V2.0

1. Statement

Thanks for purchasing our products, please contact us for any question or requirement.
This manual is meant only for FENTON wireless network video recorder kit.

2. Safety Cautions

1. Please do not put any container with liquid on the device(like vase with water).
2. Please put the device at a ventilated place and prevent clogging the ventilation hole.
3. Please check the power voltage, to avoid any damage to device caused by wrong voltage.
4. The NVR should work under the technical standard temperature and humidity.
5. Please place the device horizontally and keep it away from sharp pounding environment.
6. Moisture and dust on the unit may cause short circuit, for long-term use, please remove the dust on the unit, connector by brush periodically.
7. Battery replacement by yourself is not suggested, since incorrectly operation may cause burst. Please contact professional person for battery replacement.
8. Please install the device according to safety norms, you could take the national or local standard as reference.

3. Package Inspection

Please check the device and all accessories according to packing list. Please contact the distributor timely in case of any damage or lack of accessory.

1. Product Features & Specification

1.1 Wireless NVR Features

2.4GHz transmission technology 4CH 720P wireless NVR.
Embedded Linux operation system.
Standard H.264 video compression.
Main Chip: Professional industrial processor Hi3520.
4CH 720P real-time recording & synchronous playback.
Auto code matching realizes convenient real P2P application.
More stable wireless signal, Max. 35M transmission distance.
SSID technology guarantees the safety of use.
Motion detection, privacy masking, email alert.
Multiple simultaneous viewing by web browser or smart phone.
Support HDMI/ VGA video output.
Support HDD, USB flash driver storage & backup.
Reserved 3 Ethernet ports for wired IP camera connection.
1 * Standard RJ45 Port, 2*USB 2.0 Port
Network Protocol: UPnP, SMTP, PPPoE, DHCP, FTP, ETC.
1* SATA, Max. 4TB HDD.
Power: DC 12V 2A.

Wireless NVR Technical Parameters

Operating System	Embedded Linux OS
Main Chip	Hi3520
Video Input	4 channel bandwidth 20Mbps
Video Output HDMI	1024*768, 1336*768, 1440*900, 1920*1080
Video Output VGA	1024*768, 1336*768, 1440*900, 1920*1080
Video Playback	4channel synchronous playback 720P / 960H / D1 optional
Recording Mode	Auto / Manual / Motion Detection / Alarm
Playback Mode	Multiple slow / fast playback, real time, routine, event
Backup Mode	Support HDD, USB flash driver, E-cloud storage & backup
HDD Type	1*SATA, Max.4TB
External Interface	4*LAN port (1* adaptable RJ45 10M/100M WAN port 3*reserved LAN port for wired IP camera)
Network Protocol	Upnp(play & plug), SMTP(email service), PPPoE(dial-up), DHCP(automatically obtain an IP address), etc.
Power Supply	DC 12V/2A
Power Consumption	<= 5W
Working Environment	Temperature -10°--50°, Humidity 10%--90%
Size	257(L) * 210(W) * 45 (H)mm
Weight	1 KG

1.2 Wireless IP Camera Features

2.4GHz wireless transmission technology.

Standard H.264 video compression.

Enhanced wireless module, more stable signal.

Up to 25M transmission distance.

1.0 Megapixels/ 720P wireless IP camera.

Sensor: 1/4" Progressive Scan CMOS Sensor.

Main Chip: Professional industrial processor.

Solution: OV9712+Hi3518E.

Fixed 3.6mm/ 6mm lens optional.

Main stream 1280x720@30fps.

Min. illumination 0.01Lux (0Lux IR Led on).

Smart IR-cut, auto switch day& night vision.

F5* 36pcs IR Leds, 25M effective visual range.

Auto white balance, high sensitivity.

Power: DC12V 1A.

Wireless IP Camera Technical Parameters

Operating System	Embedded Linux OS
Main Chip	Professional industrial processor
Image Sensor	1/4" Progressive scan sensor
Solution	OV9712+Hi3518E
Image Resolution	1.0 megapixel, 1280x720P
S/N Ratio	>48dB
Minimum Illumination	Color: 0.1 Lux, B/W: 0.01 Lux
Lens	Fixed 3.6mm
IR Leds	36pcs Leds
Effective Range	Night vision 25M
OSD	Optional (Date Time & Title)
White Balance	Auto
Day & Night	Auto / Color / B&W
3D-DNR	Auto
Mirror / Flip	On / Off
Privacy Masking	4 zones selectable
Frame Specification	Dual Stream: H.264 128x720@30fps or lower Sub Stream: H.264 640x480@30fps or lower
Anti-thunder Level	Standard IEC6100-4-5
Interface	RJ45/WIFI 802.11b/g/n
Working Environment	Temperature -10°--50°, Humidity 10%--90%
Size	180(L) * 62(W) mm
Weight	500Gr

2. Hardware Operation

2.1 Front Panel

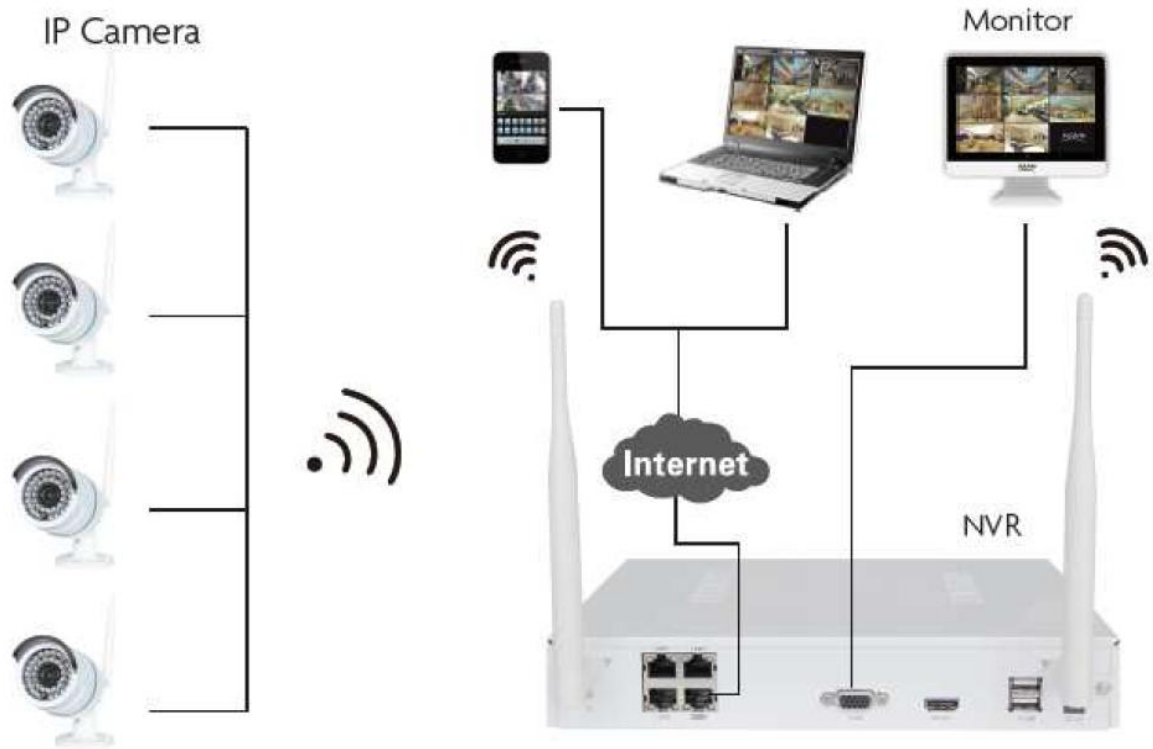


1. PWR: Power indicator light
2. HDD: Hard disk indicator light

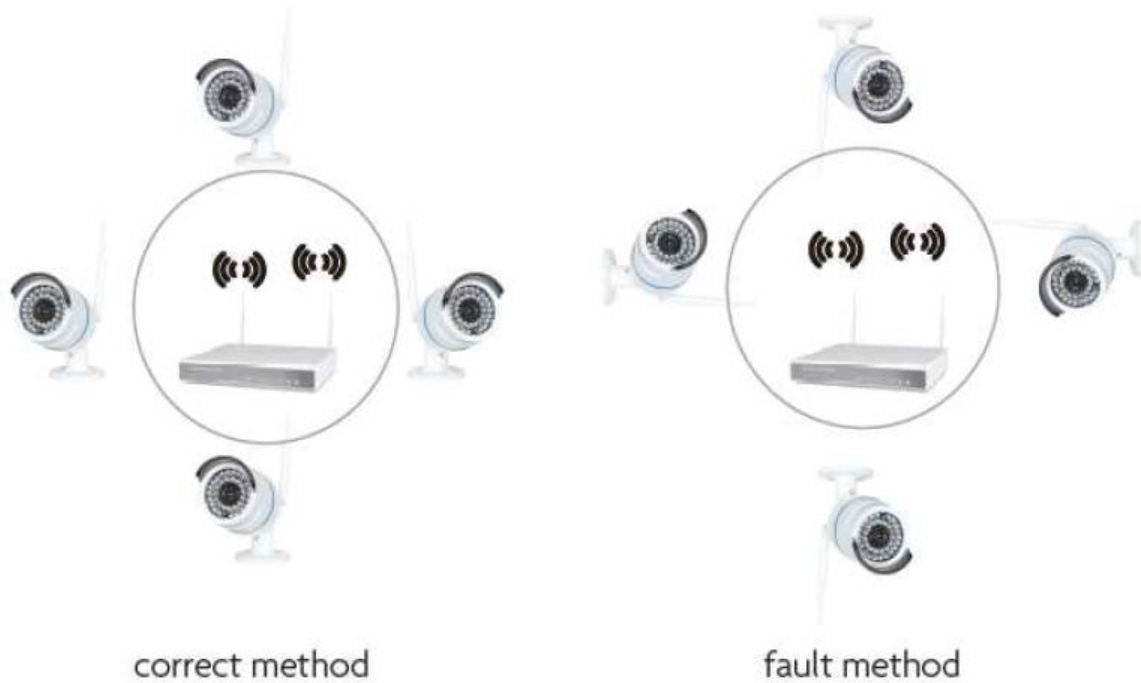
2.2 Rear Panel



2.3 Connection Diagram



2.4 Antenna Direction



2.5 Hard Drive Installation

Please note the NVR recorder was pre-installed 1TB HDD inside.

1. Hard drive storage capacity measurement conversion

B	1 B = 8 b
MB	1 MB = 1000 KB
GB	1 GB = 1000 MB
TB	1 TB = 1000 GB

2. How to calculate recording consumption of HDD capacity

--1. One channel recording file size in one hour: $A = B / 8 / 1000 * 3600$

--2. "N" channels recording file size in 24 hours: $A = B / 8 / 1000 * 3600 * 24 * N$

--3. "N" channels recording file size in D days: $A = B / 8 / 1000 * 3600 * 24 * D * N$

A: Required memory ; B: Code rate ; N: Channels ; D: Recording days

2.6 Packing List

No.	Items	Quantity
1	Wireless NVR	1 pcs
2	Wireless IP camera	4 pcs
3	USB mouse	1 pcs
4	1TB HDD (pre-installed)	1 pcs
5	1M network cable (for IP camera code	1 pcs
6	DC 12V/2A power adapter (for NVR)	1 pcs
7	DC 12V/1A power adapter (for IP	4 pcs
8	FENTON User Manual	1 pcs
9	CD disk	1 pcs
10	Screw bag	4 pcs

3. System Software Operation

3.1 Turn on/off

1. Make sure the access AC voltage is stable during NVR configuration and use.

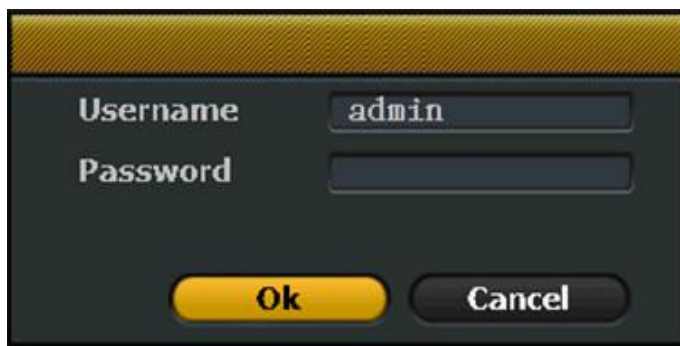
2. Connect NVR to monitor by HDMI / VGA video output cable.

3. Apply power to boot up the device, the [power] indicator will be on. When entering the system, it's a normal status if the status indicator flashes. The system booting as shown below.



3.2 Login

After system is turned on and initialized, it will pop up the login interface automatically as shown below.



Login steps:

1. Left click and enter user name to login. (default users name is "admin" by factory setting)
2. Left click and enter the logging password.(default password is blank by factory setting)
3. Click the "OK" to complete login.

Note: Password can be numbers, operators or */ #, for no longer than 10 characters.

3.3 Logout

Right click mouse to get main menu, go to Exit system (System logout)→ Logout/ Reboot/ System shutdown.



If users need to logout automatically, steps are below:

Right click mouse to get main menu→ System setup→ General setting→ enable logout automatically→ device logged off without operation in 1 minute→ Re-enter user name & password to login.

3.4 Rebooting

Right click mouse go to main menu, select " System logout", click the "rebooting"

4. Setup Wizard

After Logging in, the system will automatically open " Setup wizard" to help user to complete basic settings.

4.1 Setup wizard

Scan QR-code to download the APP by mobile phone viewing. Check “Enable boot wizard”. (If users do not click “Enable boot wizard”, all setup wizards steps below will not be prompted at next restarting)



4.2 General setup

Change the time zone/ date / time / language etc, click next to go to HDD setup as below.



4.3 HDD setup

Users can check Hard drive’s model number, capacity, status,etc as below. Also users can format HDD. And click next to go to record setup.



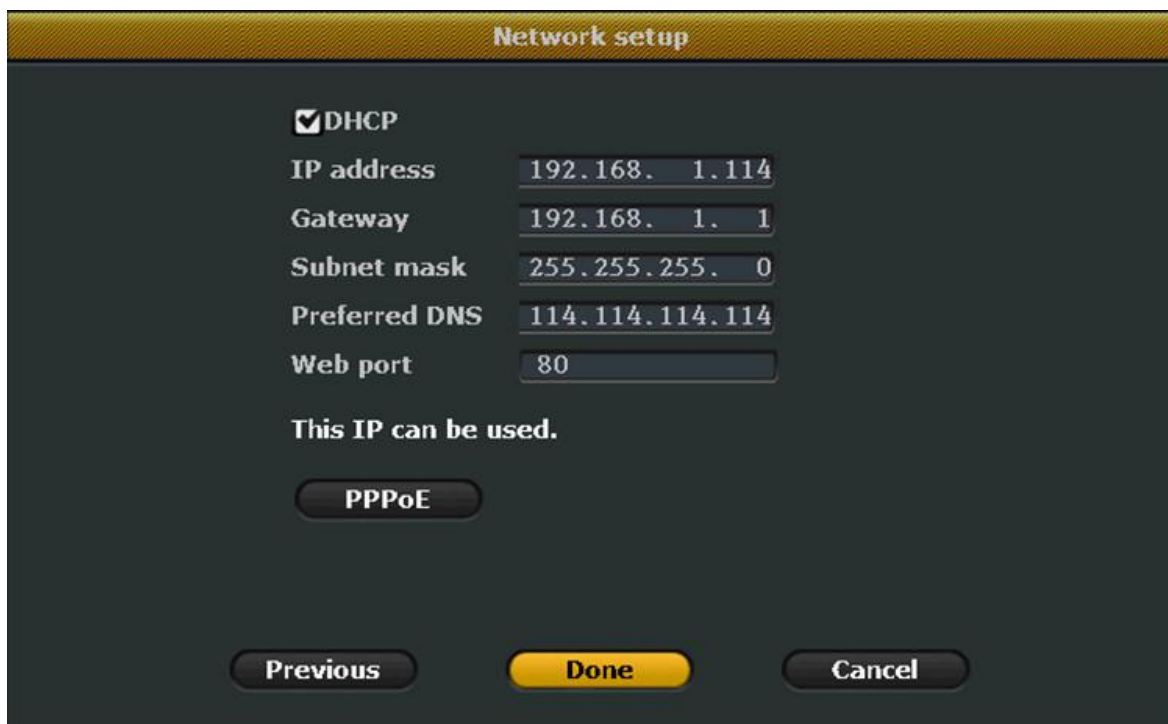
4.4 Record Setup

Users can choose different record mode. Preset record plan based on channels, weekdays, and schedule, user can set 4 schedule in the weekday selected for each channel. Or only recording by time / motion / sensor as shown below.



4.5 Network setup

Users can choose auto DHCP, or edit IP address / gateway / subnet mask / PPPoE etc. click "Done" to complete all setting as shown below.

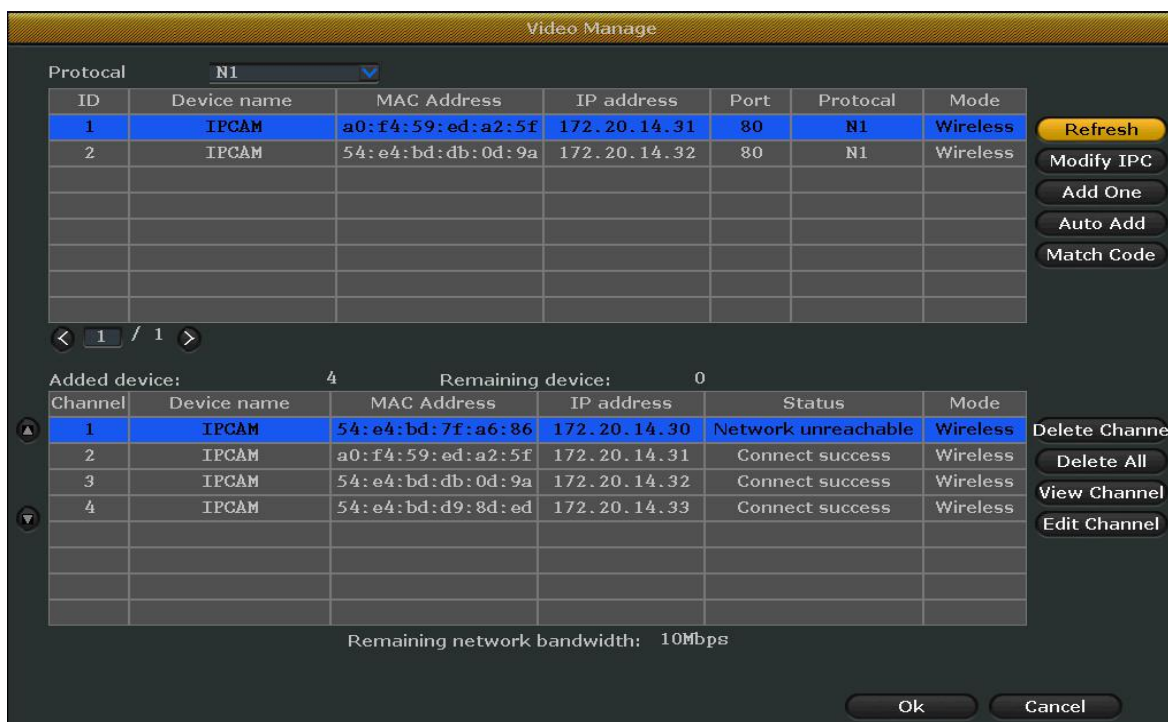


5. Video Management

5.1 Refresh

Users can click "Refresh" all wireless IP camera in same subnet.

Steps: Right click mouse to get main menu → IPC add → Video manage → Refresh as below



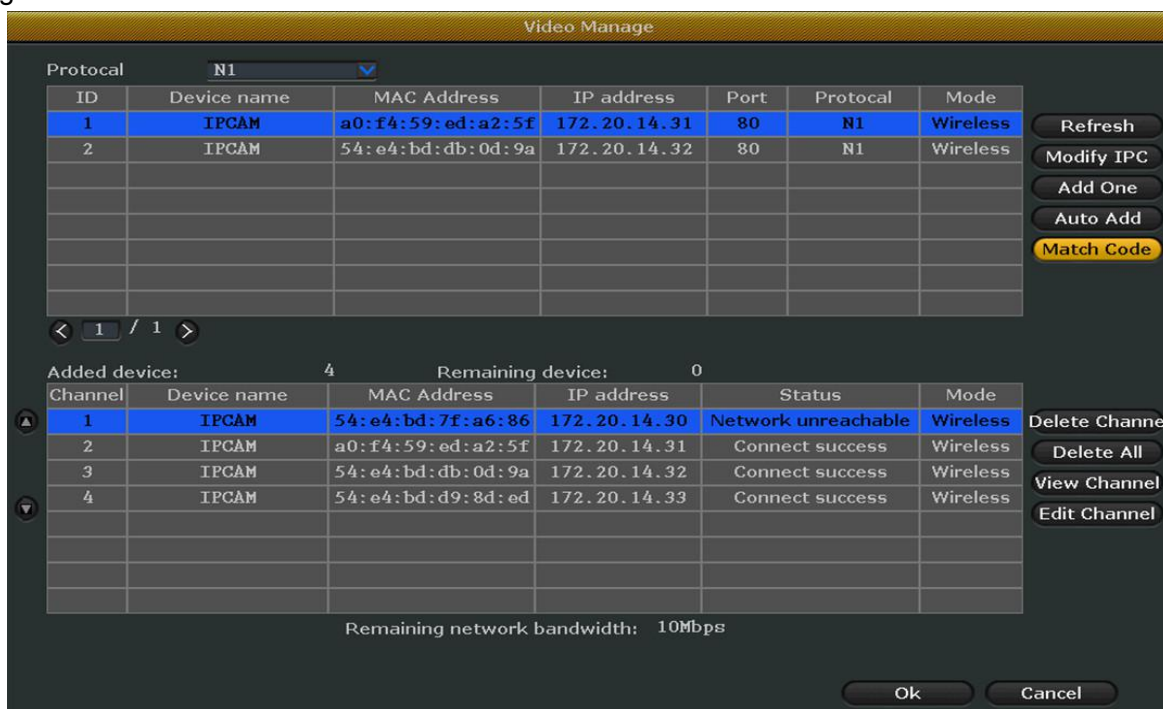
5.2 Match code

Users can add the IP camera with NVR after matching code.

The IP cameras and NVR have been matched code by factory setting, this device will work normally when

applying power. No need to match code. While if users need to add some new cameras, the cameras must be matched code with NVR to get video.

Steps: Connect camera with NVR LAN port by network cable→ click NVR main menu Add IPC→ Video manage→ Match code→ click Yes to mach code.

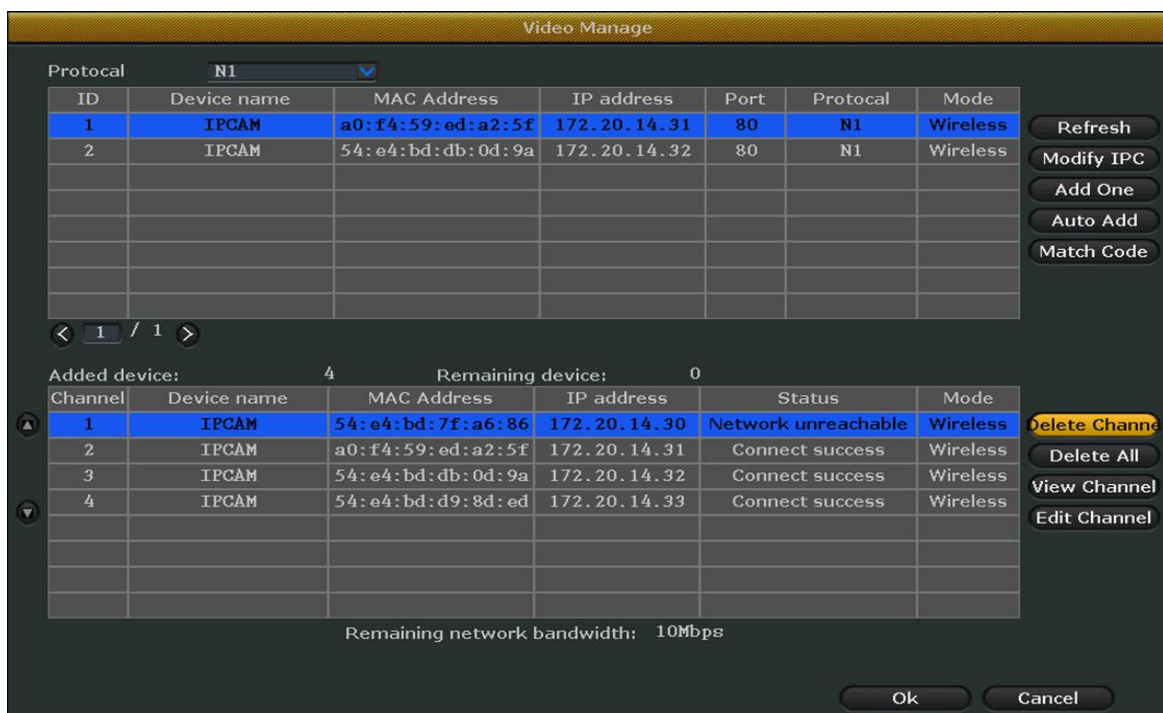


Note: If device prompt match code unsuccessfully, users need to click “Refresh” to search camera. If camera can’t be searched, please connect the network cable again to match.

5.3. Delete IP Camera

Users can delete the camera to disconnect video recording.

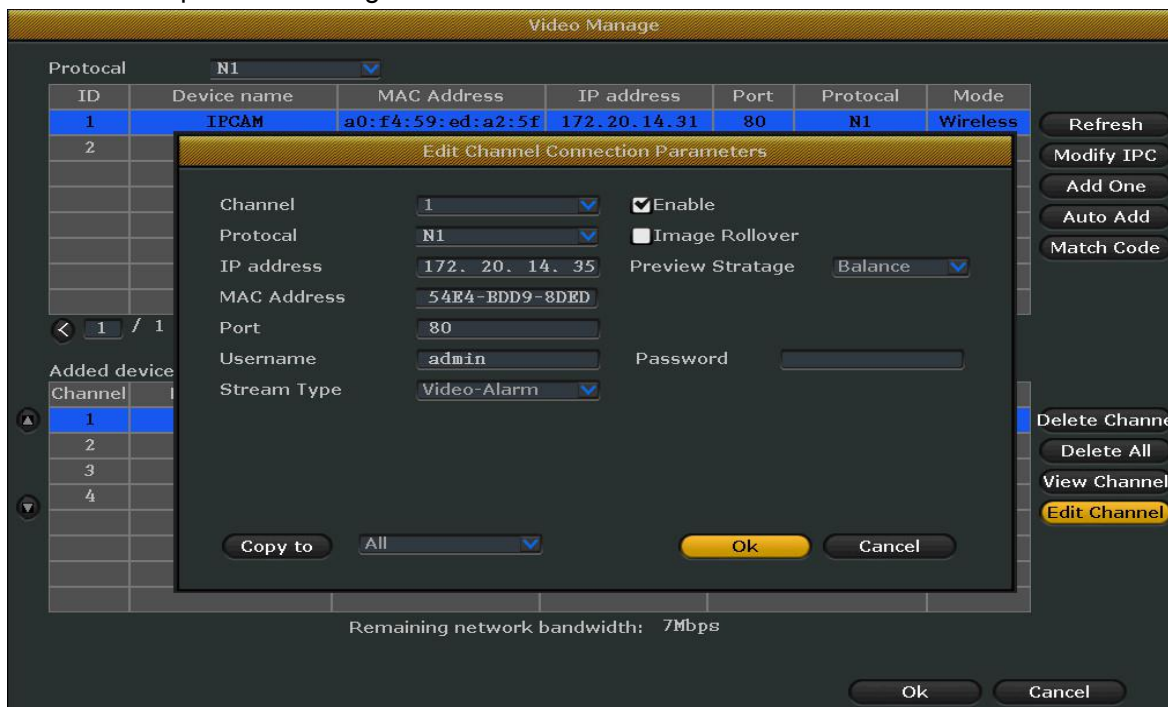
Steps: Right click to get main menu→ Add IPC→ Video manage→ choose Channel (device name)→ click Delete channel. Click “Delete all” button to achieve a key operation to remove all cameras.



5.4 Edit channel

Users can modify protocol, IP address, port, user name, password and stream type for each channel.

Steps: Right click to get main menu→ Add IPC→ Video manage→ choose Channel (device name)→ click Edit channel→ Setup camera configuration as below.



Note: Users can setup stream type (main stream / sub stream) and resolution to check video image upon the network conditions.

6. Network Setup

6.1 Network setup

1. Right click mouse to get main menu→ System setup→ Network setup, then edit the network as shown below.



2. Users can choose auto DHCP, or edit IP address / gateway / Subnet mask / PPPoE etc manually. It's similar steps as part 4.5.

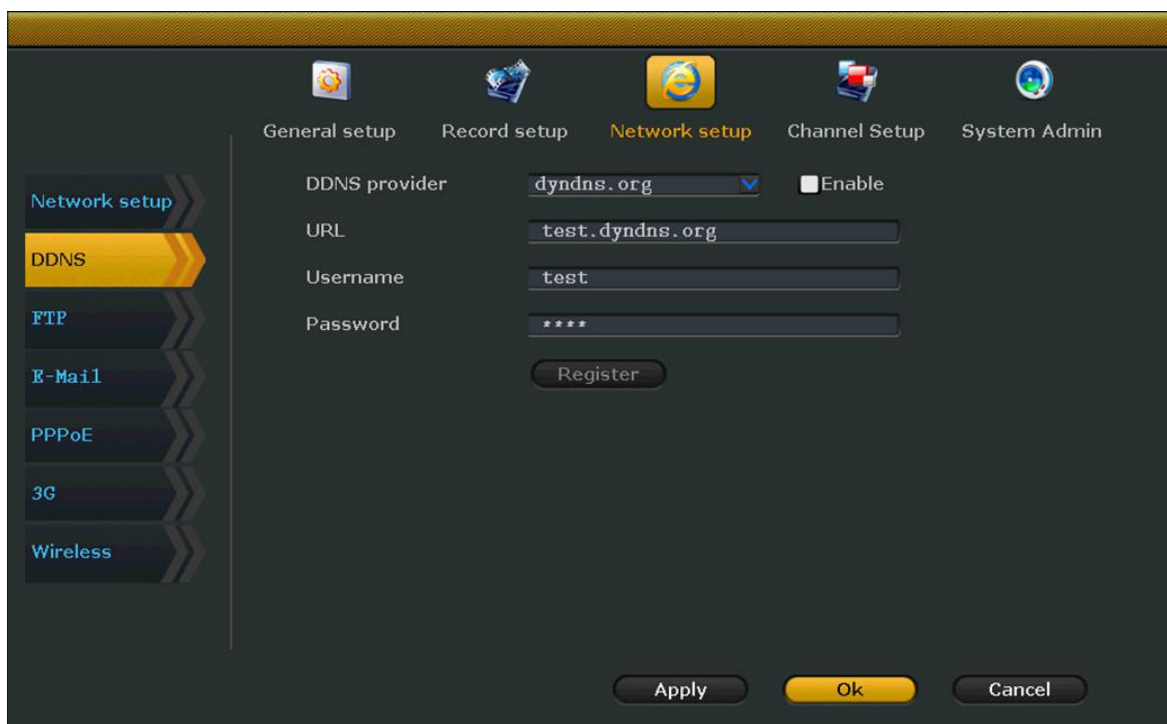
3. Click OK to save setting.

Items	Introduction	Remark
IP	Revise local IP address	Edit IP address manually
Subnet	Revise subnet mask	
Gateway	Revise gateway IP	
MAC	Default MAC address	The device is with the only MAC address
Web port	Web port is used to transmit video & other control signals.Default code 80	Access device by Webpage/ PC client/ smart phone are use this same port
DHCP	Click DHCP, device will search local IP	IP address can't be revised manually if enable DHCP
ESee ID	P2P online remote reviewing	Add device ID to remote view by PC or phone

6.2 DDNS

If the device is without a fixed IP address, users can access it via domain name (dynamic DDNS).

Steps: Right click mouse to get main menu→ System setup→ Network setup→ DDNS→ click Enable and input URL, user name, password→ click OK to save setting.



1. The DDNS can't be editable if users do not click "Enable".

2. Supported network domain type: popdvr, 3322, changeip, no-ip, dyndns.

6.3 FTP

FTP function is used for uploading the file of motion record and sensor record.

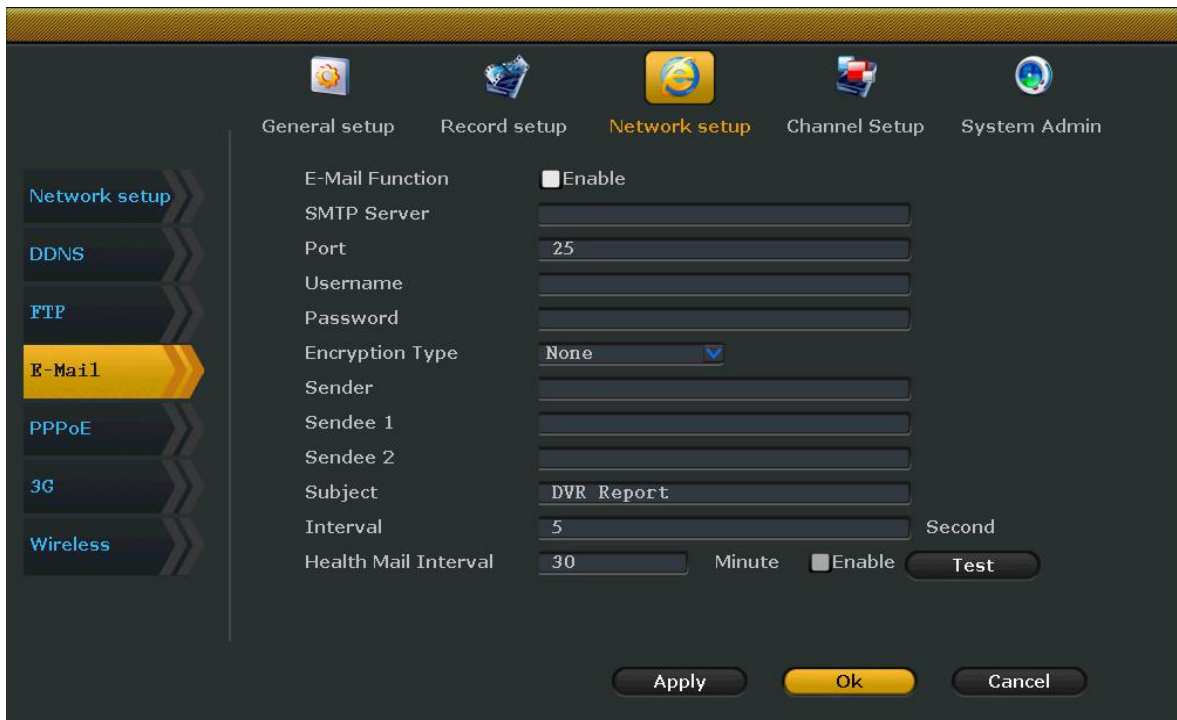
Steps: Right click mouse to get main menu→ System setup→ Network setup→ FTP→ FTP function "Enable"→ enter FTP server, port, users name, password etc→ setup Schedule→ click Test→ click OK to save setting as below.



6.4 E-Mail

Enable E-mail function, the motion record and sensor record file will be notified to users by E-mail.

Steps: Right click mouse to get main menu→ System setup→ Network setup→ E-mail→ Email function “Enable”→ enter SMTP server, port, users name, password, sender etc→ click Test→ click OK to save setting as below.



Setup Instruction

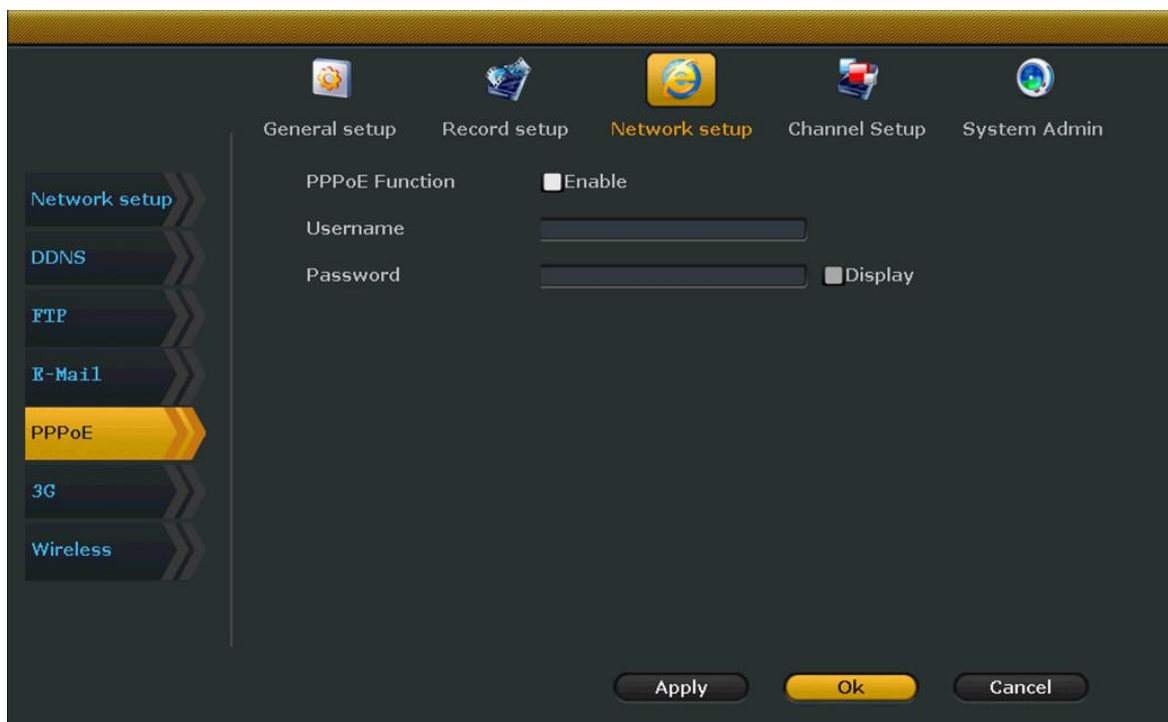
Items	Instruction
SMTP server	Input format as smtp. "mail server domain name" .com
User name	User name of mailbox
Password	Email password
Encryption type	Default status is "None"
Sender	Sender's email address
Sendee	Receiver's email address
Interval	Interval of emails receiving time
Health mail interval	Interval of emails sending time

1. Users need to enable "Health mail interval" to make sure it's effective.
2. Users must check their mailbox has been enabled SMTP function.

6.5 PPPoE

PPPoE function is used to be dail-up internet connection.

Steps: Right click mouse to get main menu→ System setup→ Network setup→ PPPoE→ PPPoE function "Enable"→ setup users name, password→ click OK to save setting as shown below.



6.6 3G

Step: Right click mouse to get main menu→ System setup→ Network setup→ 3G→ Enable 3G module→ setup Dial number, APN, PIN, user name, password→ click OK to save setting as shown below.



7. Video Record

For video record, the recording precedence level is Sensor record> Motion record> Manual record> Time record.

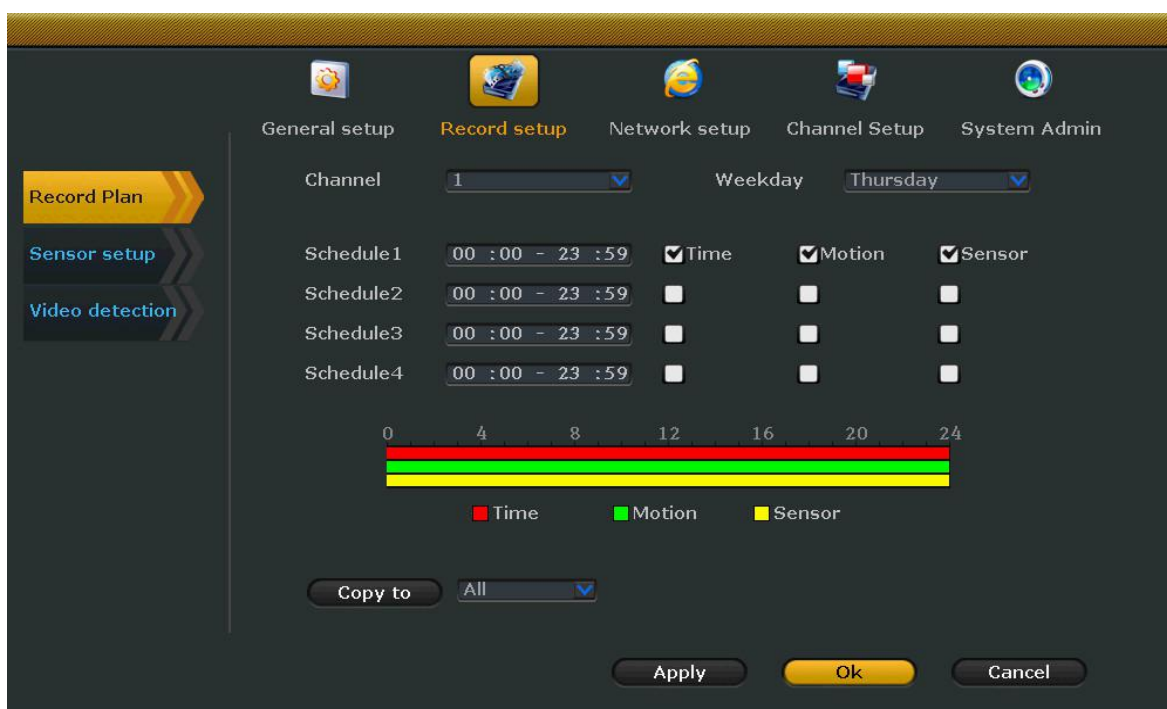
7.1 Manual record

Users can check or close the video by manual record. Right click mouse to get main menu, go to Manual record→ Choose the channel No. (click All if needed)→ OK/ Cancel.



7.2 Time Record

The system only record during the schedules upon users' setting. Right click mouse to get main menu, go to System setup→ Record setup→ Record plan→ choose Channel No. & Weekday→ choose Schedule→ click Time→ Copy to all (if all channels are same schedule)→ click OK to save setting.



In time record, it's available to set 4 schedules. While users only need to choose 【00: 00~23:59】 if record in full 24 hour, others schedules are no need to fill.

7.3 Motion record

The system only record in case of detecting people or objects motion. After completing steps 4.6.2, right click mouse to get main menu, go to System setup→ Record setup→ Video detection→ choose Channels→ setup Sensitivity “High”→ setup Detection “Motion” → set Alarm/ Buzzer/ Email notice/ FTP upload→ click OK to save setting.



1. Please copy the same steps to set motion record for each one channel.
2. Please note to set Detection at mode “ video loss” & “video cover” at same way.
3. The default status of sensitivity is high.

7.4 Sensor record

Right click mouse to get main menu, go to System setup→ Record setup→ Sensor setup→ choose Channel→ Work mode→ Alarm duration→ set Alarm/ Buzzer/ Email notice/ FTP upload→ click OK to save setting.



1. Please follow steps 4.6.2 to set sensor record plan, and click the option “Sensor” item.
2. Click record channels “all” or “Copy to all” if all channels sensor setup are same as the first channel setting.

8. Video Playback

8.1 Rapid playback

Enable rapid playback, users can review the most recent record data easily.

Right click mouse to get main menu, go to Video playback→ Time length (x mins)→ Channel No.→ Check video.



8.2 Normal playback






Enables normal playback, users can retrieve video data based on the type and recording time.

Right click mouse to get main menu, go to Video playback→ Channel No.→ Record mode→ Search time (input beginning time and ending time)→ click Search. Recording will come out within 30s. Drag time bar, click Playback to start.



1. Dragging time bar to control playback progress.
2. 2X, 4X, 8X, 16X and 32X times playback are available.

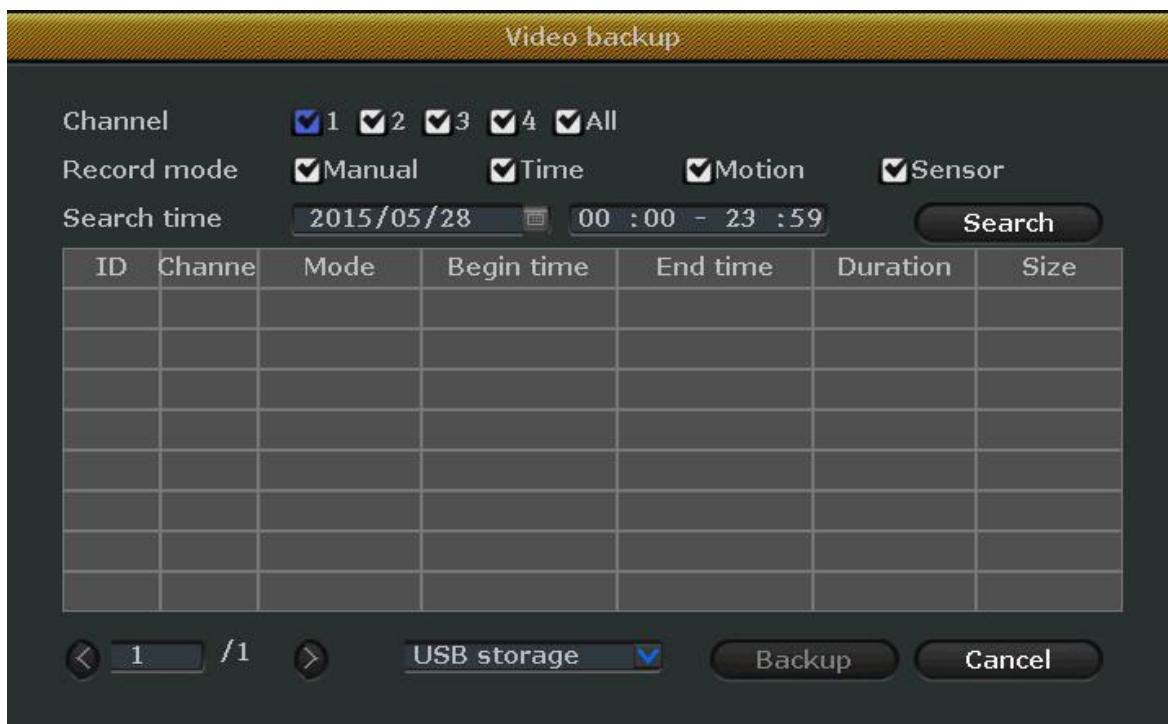
Dragging bar icon introduction

Button	Function
	Playback previous frame
	Playback next frame
	Play
	Pause
	Fast forward x2, x4, x8

9. Video Backup

This device support USB flash drive to backup, max. 32GB USB-stick readable.

Connect USB-stick to device, right click mouse to get main menu, go to “Video backup”→ Channel No.→ Record mode→ Search time (input beginning time and ending time) → click Search. Recording will come out within 30s. Click Backup to copy the video as below. Recording will be stored every one hour.



9. General Setup

9.1 General setup & Time setup

Please skip this two steps if users have completed the setting as part 4.2 Setup wizard. And if users need to set this part, please refer to 4.2 Setup wizard as well.

9.2 Screen setup

Steps: Right click mouse to get main menu→ General setup→ Screen setup as below.



Setting introduction

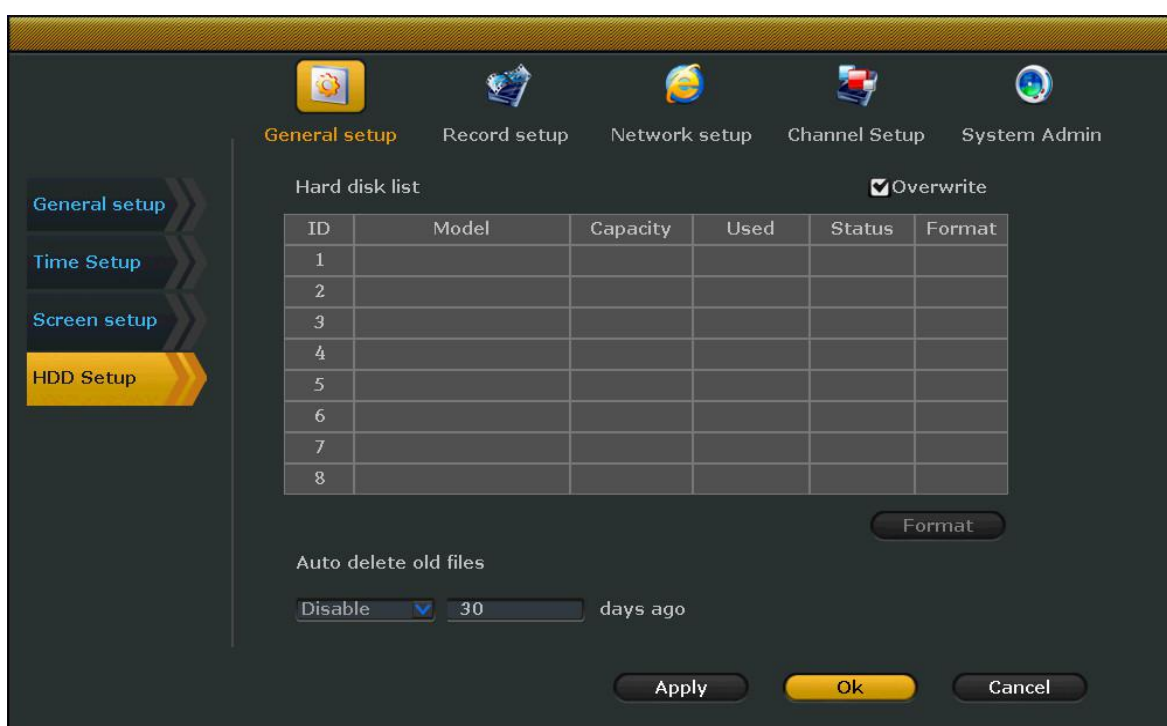
Items	Introduction
Channel	Choose channel No. to adjust color for each channel
Camera title	Change channel name
OSD alpha	Adjust the background of menu
VGA resolution	Resolution output adjustable
Auto switch	Enable auto switch and time setting

Users can click “Skip loss”, the channel will if it’s without video output.

9.3 HDD setup

Users can check Hard drive’s model number, capacity, status,etc. Also users can format HDD.

Steps: Right click mouse to get main menu→ General setup→ HDD setup→ choose HDD need to format→ click Format→ click OK to save setting as below.



1. Users can click “Overwrite” to coverage data automatically when full record.
2. Users can choose custom and input “ [X] days ago” to setup custom automatically delete old files.

10. System Admin

10.1 System version

Users can check device software / hardware version, serial No. etc. Version information must be provided to distributor due to maintenance.

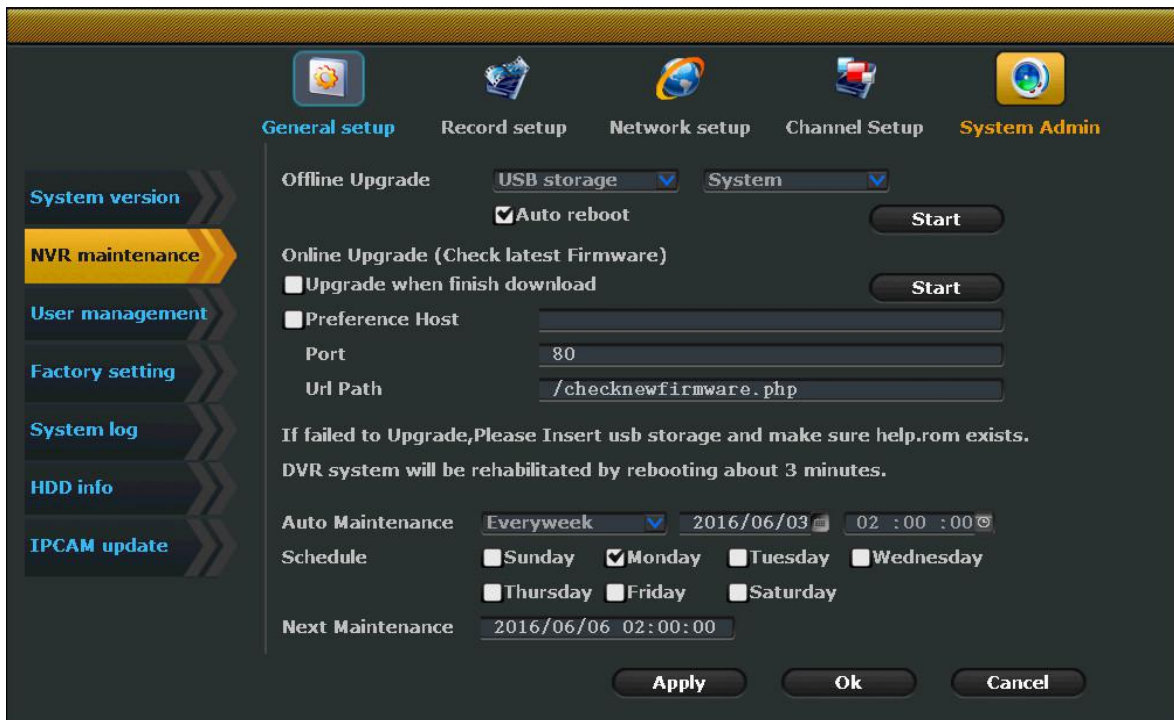
Steps: Right click mouse to get main menu→ System setup→ System Admin→ System version as shown below.



10.2 NVR maintenance

Users can upgrade to newest software version. Users need to copy the upgrading file in USB storage and plug it into device USB port.

Steps: Right click mouse to get main menu→ System setup→ System Admin→ NVR maintenance→ Enable auto reboot→ click Start to upgrade.



1. Users can check upgrading progress in the progress bar, system will restart after upgrading completed.
2. The device can't loss power during firmware upgrading, or it will make all of the resource unavailable.

10.3 User management

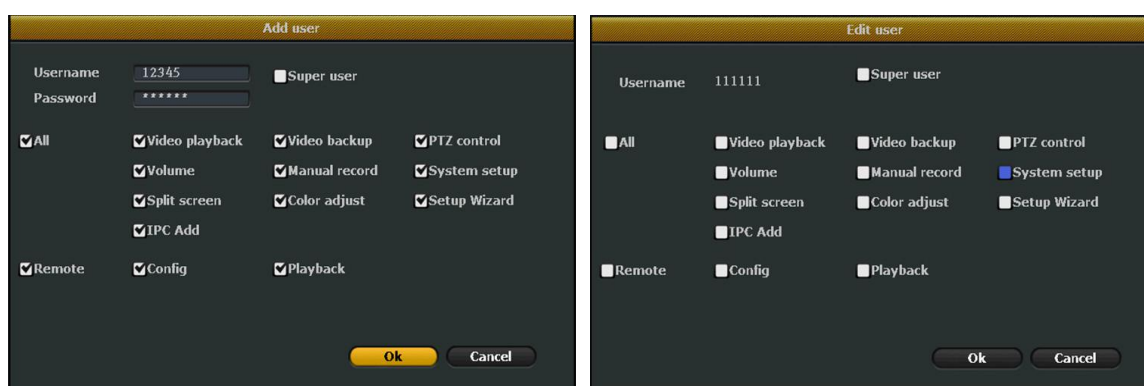
Steps: Right click mouse to get main menu→ System setup→ System Admin→ User management→ click Add user/ Delete user/ Edit user/ Set password.



1. The default administrator of device is “admin”, and password is blank.
2. The administrator can add/ delete/ edit new users.

10.3.1 Add user / Edit user

Steps: Right click mouse to get main menu→ System setup→ System Admin→ User management→ click Add user → enter new user name→ choose permission options→ click OK to save setting. Users can edit exiting user name to revise permission as below.



Permission instruction

Items	Instruction
Video playback	New users can retrieve the data of video playback stored in hard disk
Video backup	New users can backup the data of video record stored in hard disk
Manual record	New users can enable manual record
System setup	New users can change general setup/ record setup/ network setup etc.

Split screen	New users can enable auto switch
Color adjust	New users can adjust the color / alpha / brightness of video picture
Setup wizard	New users can enable system wizard
IPC add	New users can search/ add/ delete IP camera
Remote config	New users can configure device setting during remote access
Remote playback	New users can retrieve the data of video playback during remote access

10.3.2 Delete user

Steps: Right click mouse to get main menu→ System setup→ System Admin→ User management→ click Delete user → click Yes to save setting.

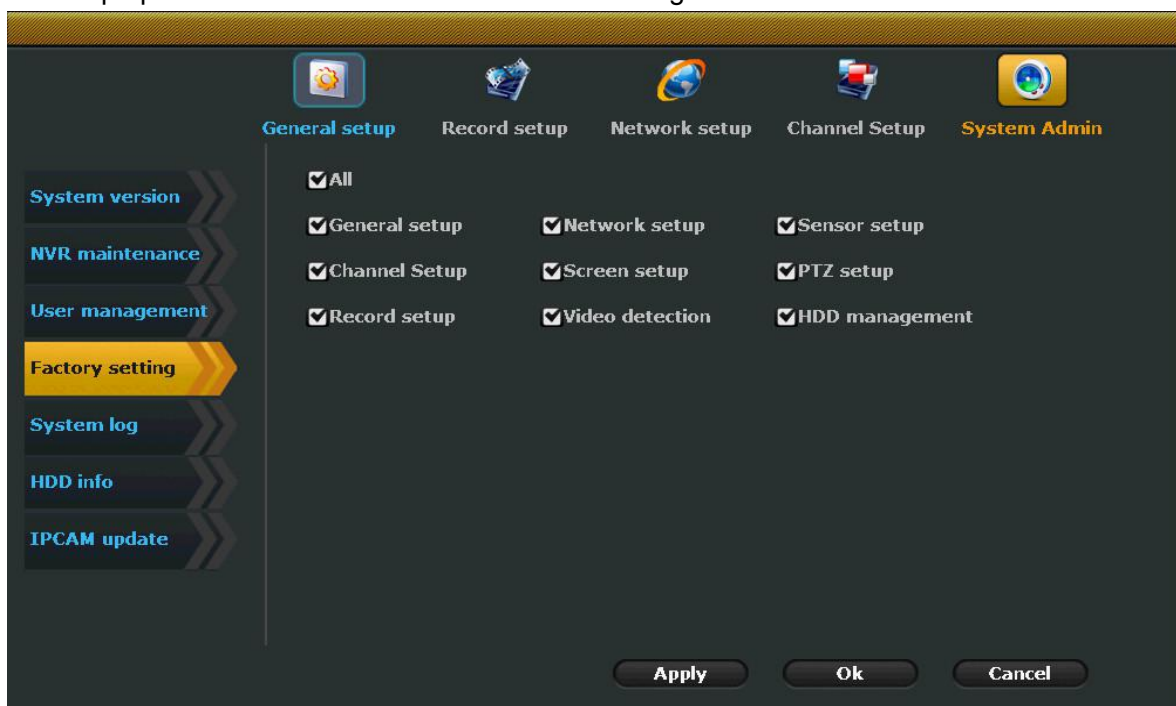
10.3.3 Setup password

Steps: Right click mouse to get main menu→ System setup→ System Admin→ User management→ click Delete user → click Yes to save setting as below.



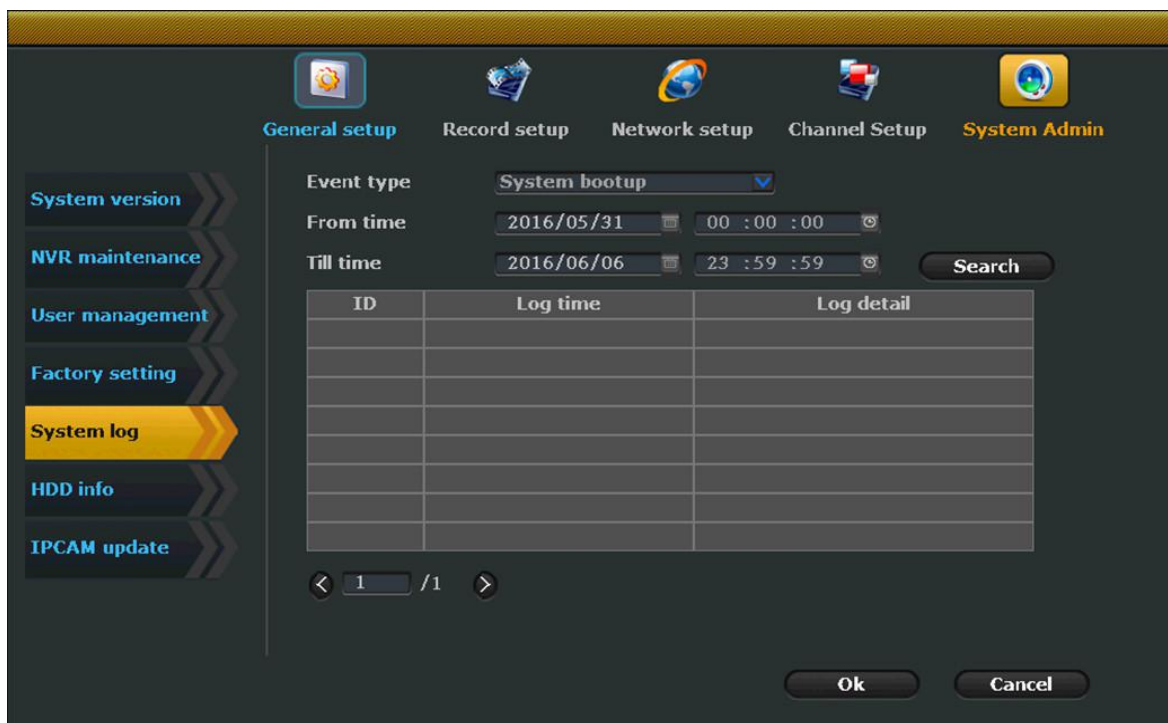
10.4 Factory setting

Steps: Steps: Right click mouse to get main menu→ System setup→ System Admin→ Factory setting→ click All / setup options→ click OK→ click Yes to save setting as below.



10.5 System log

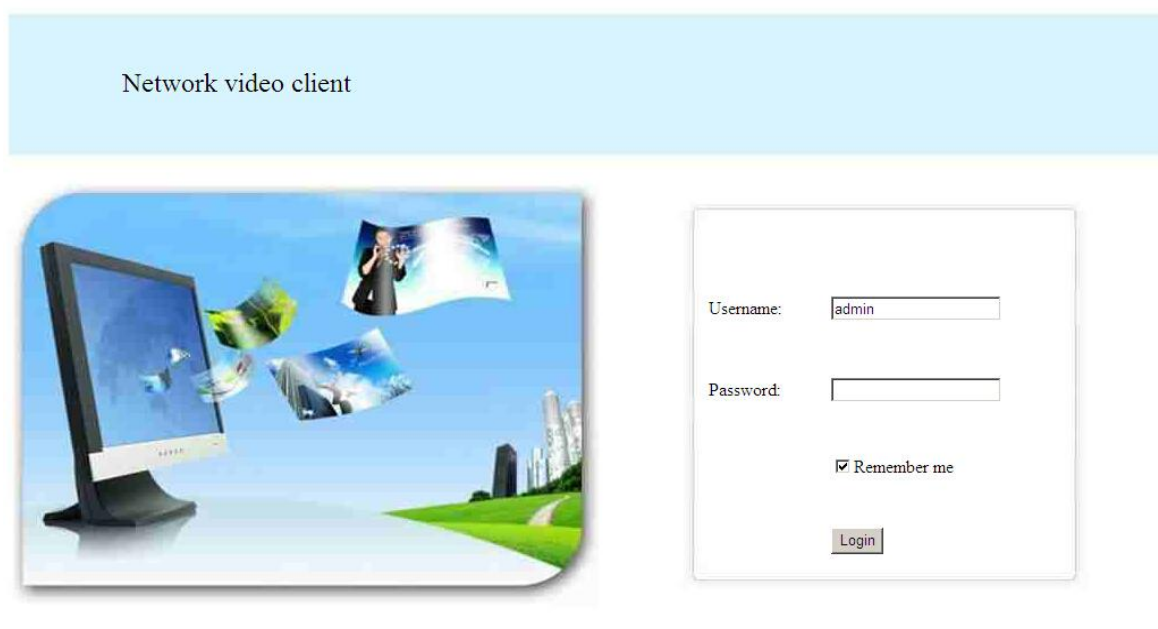
Steps: Right click mouse to get main menu→ System setup→ System Admin→ System log→ choose Event type/ time from/ till lick→ click Search→ click OK to check all operations.

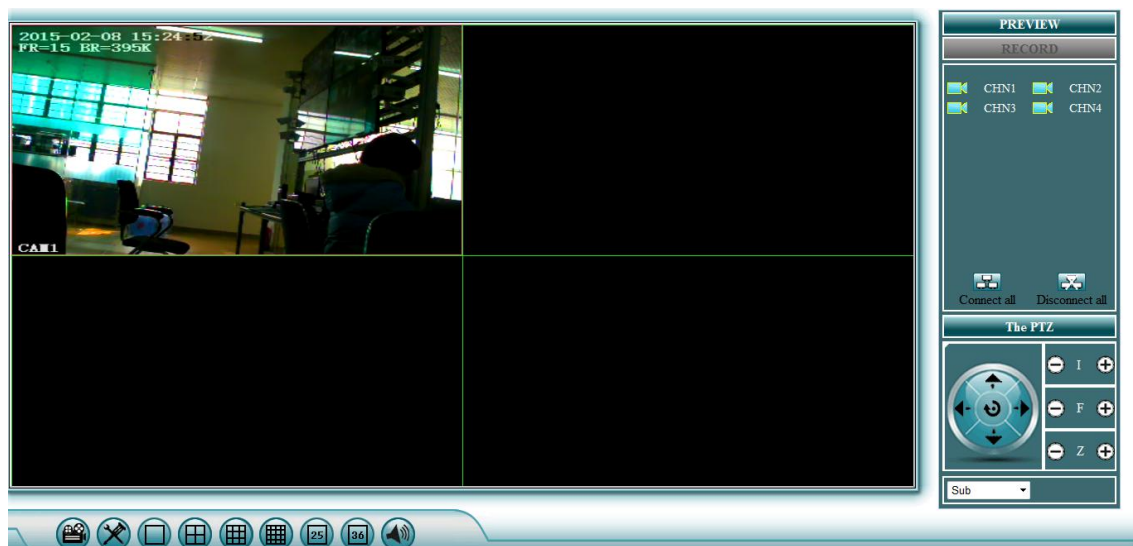
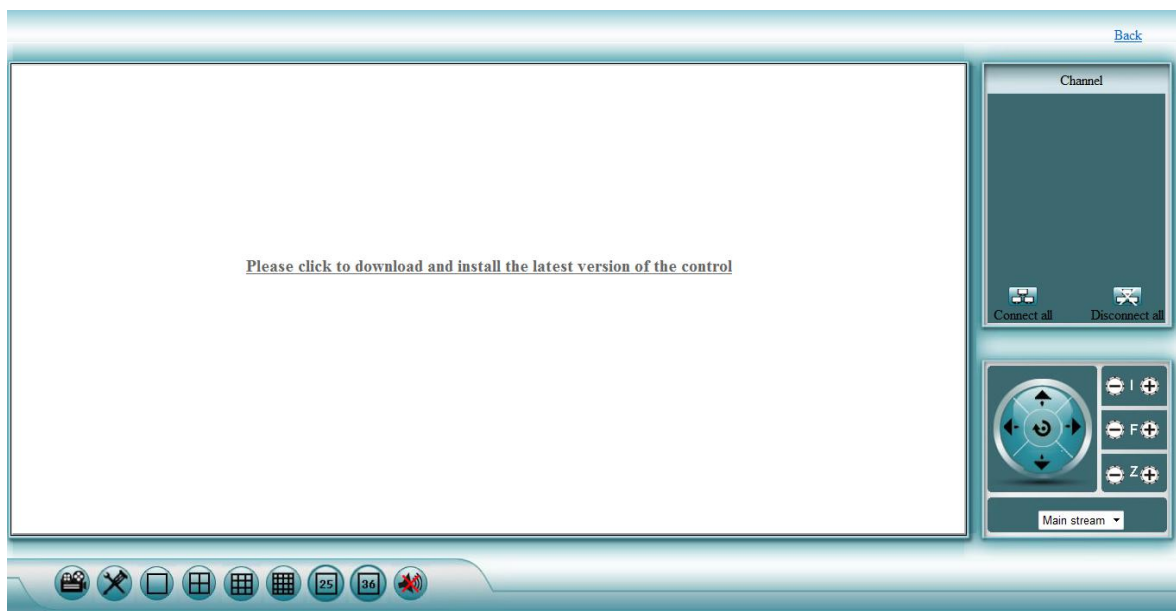


1. Click previous / next page to view the log record.
2. Log information are stored in HDD, it will be lost if users format hard disk.
3. Event type options: System startup, system logout, configuration information, record, alarm, etc.

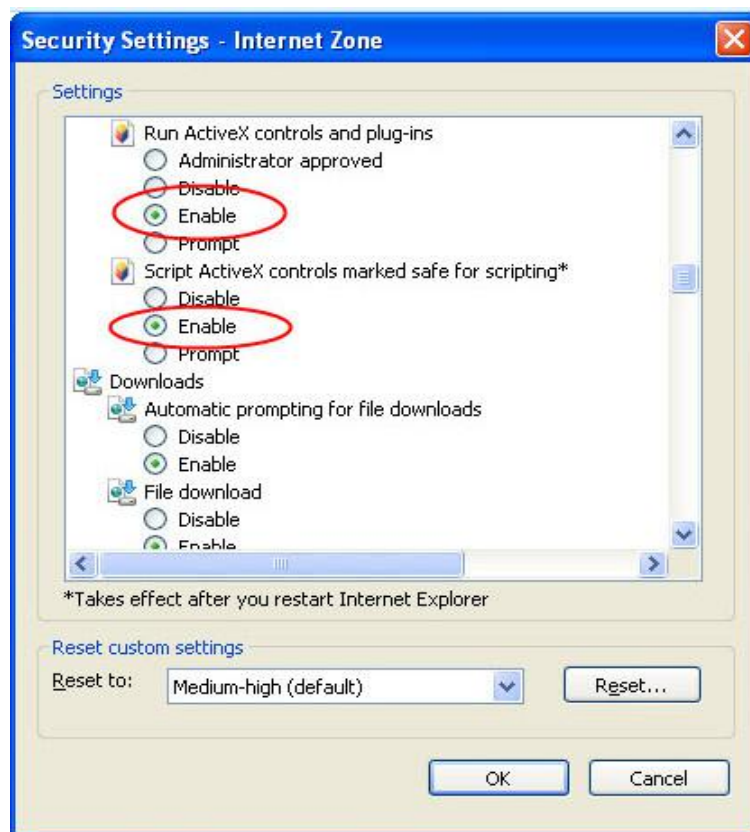
11. Access in LAN on PC

Steps: Open browser→ Enter NVR IP address→ LAN login webpage→ input users name and password to login→ click and download control plugs→ Install “WebClient.exe”→ Login again to check video.





1. Users can find the IP address by steps: Main menu→ Network setup→ IP address.
2. This device supports multi users to log on different PC end.
3. This device supports video playback, change configuration settings, etc.
4. If the web port code (default port code is 80) is changed, users need to input IP address and port in browser to login.
5. This device supports multiple browser to access, such as Internet Explorer, Chrome, Firebox, etc.
- 6.If users can't load and login, then users need to change browser setting. Hereby illustrate Internet Explorer setting: Click Tools→ Internet options→ Security settings→ Custom level→ Security setting→ Enable run Activex controls and plug-ins→ click OK to save setting as below.

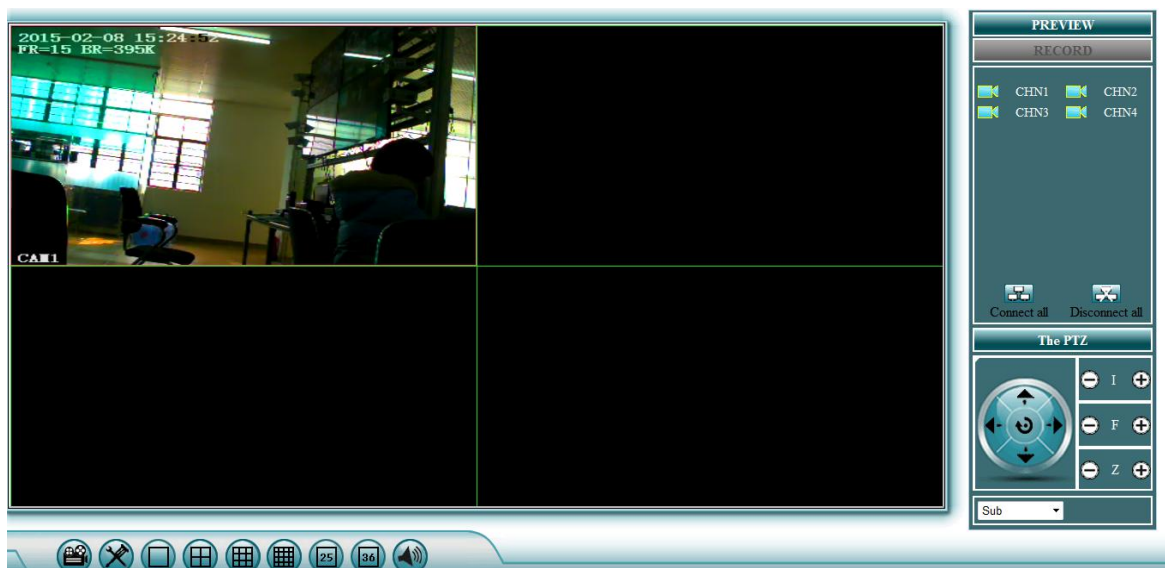


12. P2P Remote Access

12.1 Access in WAN by PC

Steps: Open browser→ input **www.e-seenet.com**→ choose Esee ID login→ enter device ID, user name, password→ login→ check online demo as below.



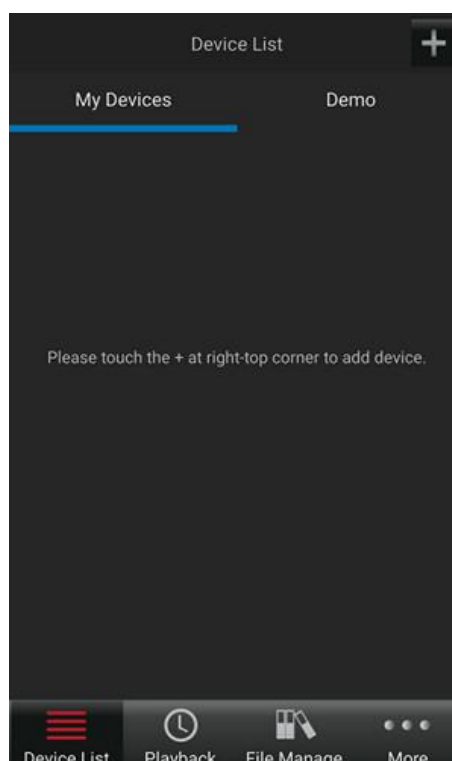


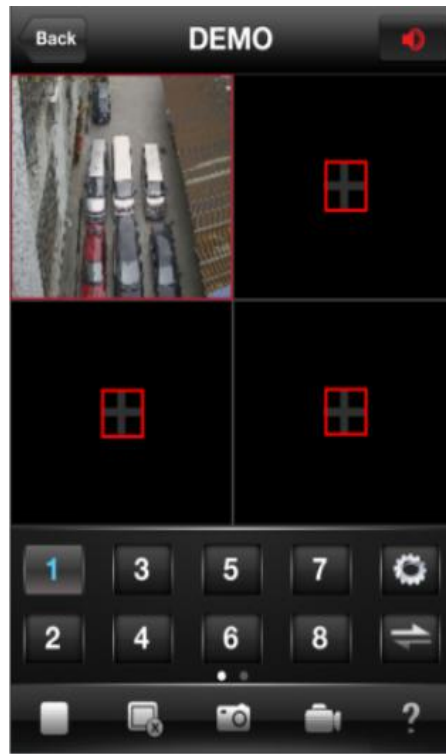
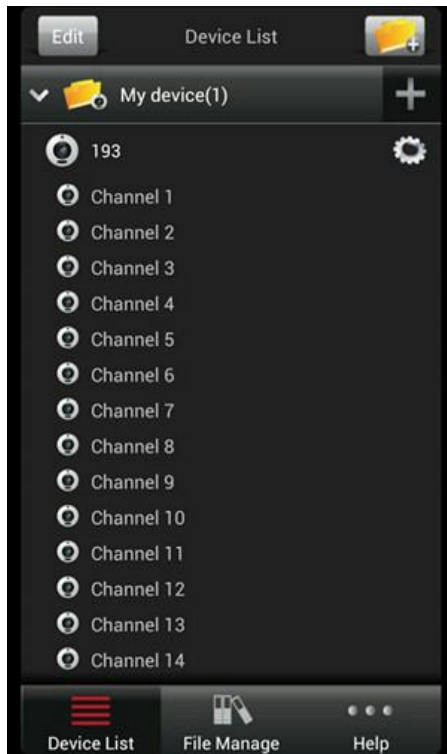
1. Users can find the device ID by steps: Main menu→ network setup→ click P2P→ get device ID.
2. Make sure the ID online (device connect to WAN) to remote viewing.
3. The bandwidth of each channel should be 30kb/s at least to make sure fluent video viewing.
4. Users can choose login by user name as well. While users need to create a new account. Please follow the guide to complete register to login.
5. This device supports multiple browser access, such as Internet Explorer, Chrome, Firefox, etc.

12.2 Access in WAN by Mobile phone

Users can download P2P APP by steps as below.

Go to APP store or Google play→ search Eseenet→ click download→ login Eseenet application, click “+” icon to add device→ enter device edit page→ input login information→ choose My devices and channel number to get video.

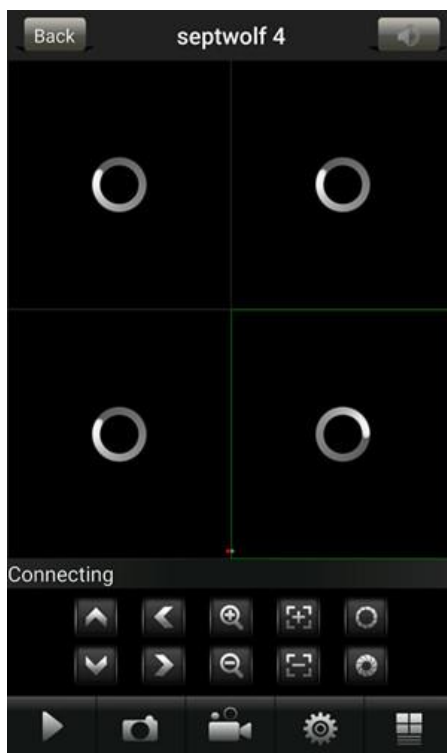




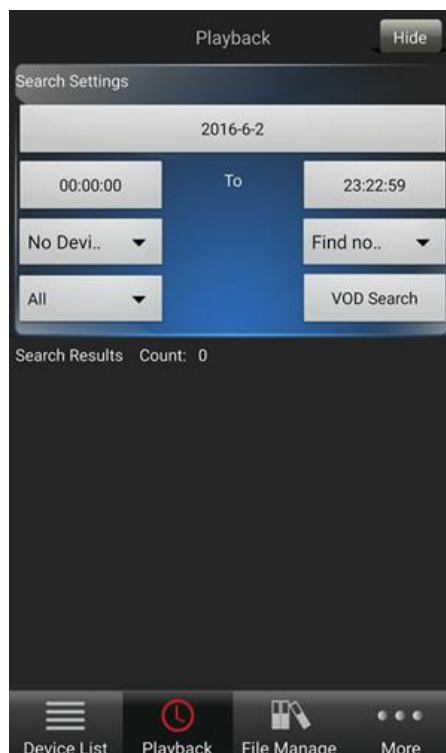
Users can download “Eseenet” in below ways:

- 1) Go to APP store or Google play to download the APP.
- 2) Go to www.e-seenet.com, and find the QR-code on left page, scan it and download.
- 3) Go to NVR menu→ Setup wizard→ QR code scan to download APP.

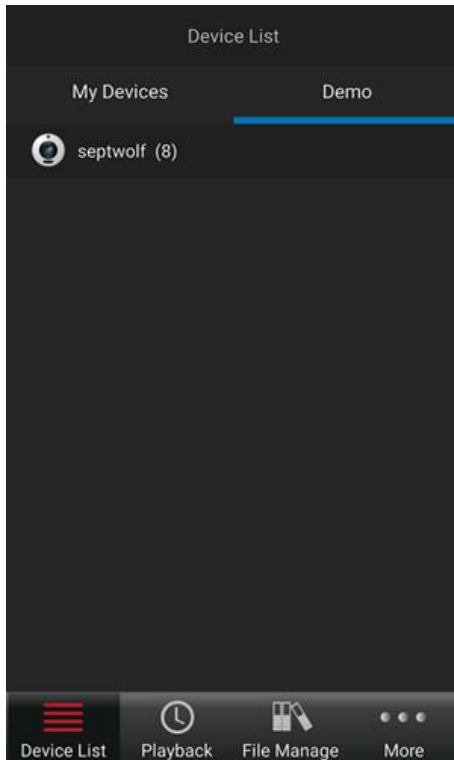
12.3 APP function instruction



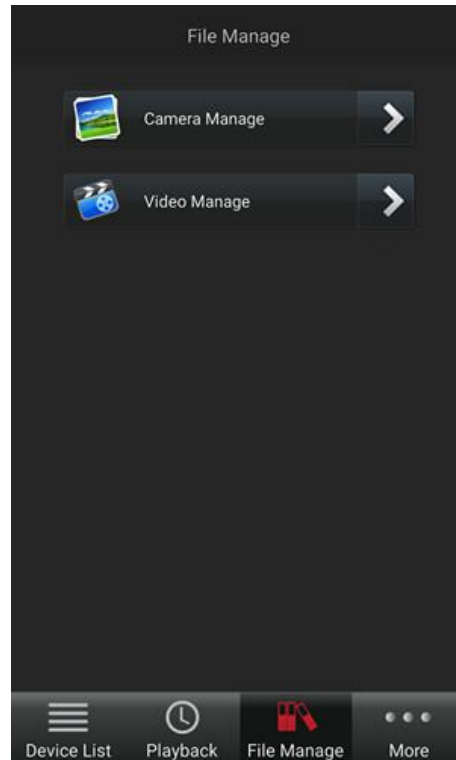
Play / Pause / Snapshot / Record



Video Playback



Device List



File Management

Note:

In order to continually improve product performance, the software version will be upgraded or updated occasionally, the technical parameters in this users manual will be modified without prior notice.

Thank you again for your choice and trust.