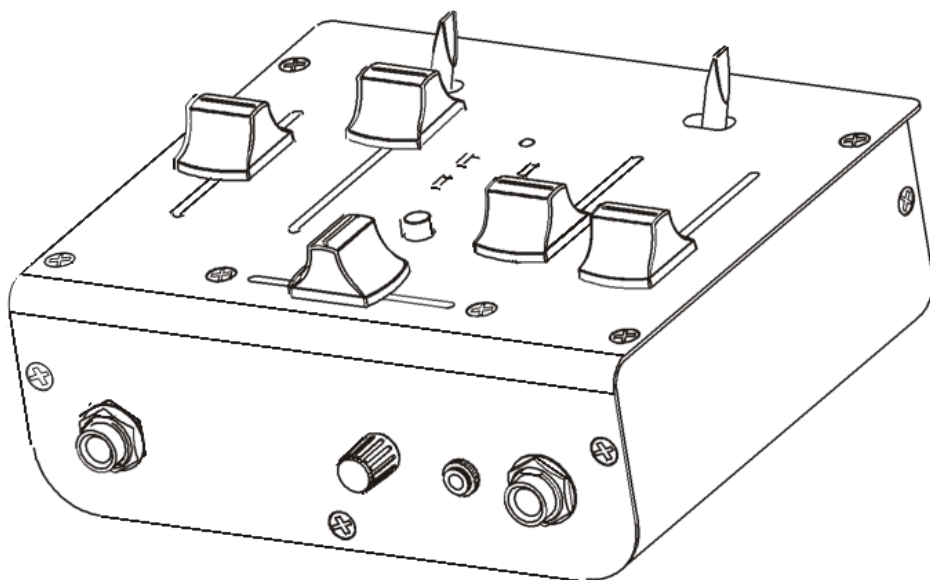


# MINI:MIX-2.0

## USB DJ Mixer

Item ref: 172.756UK

User Manual



## Introduction

Thank you for choosing a Citronic Mini:Mix-2.0 USB mixer. This product has been designed to offer reliable, high quality and convenient mixing for DJ and podcasting applications. In order to gain the best results from this equipment and avoid damage through misuse, please read and follow these instructions and retain for future reference.

## Warning:

To prevent the risk of fire or electric shock, do not expose components to rain or moisture. If liquids are spilled on the surface, stop using immediately, allow unit to dry out and have checked by qualified personnel before further use.

Avoid impact, extreme pressure or heavy vibration to the unit.

There are no user serviceable parts inside the mixer – refer all servicing to qualified personnel.

## Placement

- Keep out of direct sunlight and away from heat sources.
- Keep away from damp or dusty environments.
- Ensure adequate access to controls and connections

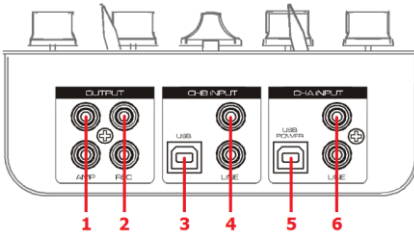
## Cleaning

- Use a soft cloth with a neutral detergent to clean the casing as required
- Use a soft brush to clear debris from the control surface
- Do not use strong solvents for cleaning the unit.

## Specifications

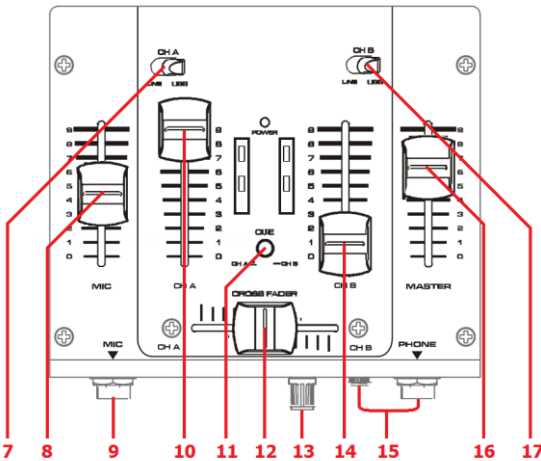
Power supply	5Vdc 500mA (USB 2.0)
Gain (Channel A-B)	-20 to 0dB
Headphone impedance	32 ohms
Frequency response	20Hz-20kHz
Total harmonic distortion	> 0.1%
Signal to noise ratio	> 80dB
Channel separation	55db (1kHz)
Line Sensitivity	1V, 10k ohms
MIC Sensitivity	20mV 600 ohms
Line output	2.0V, 600 ohms
REC output	2.0V, 600 ohms
Dimensions	150 x 130 x 55mm
Weight	500g

## Rear Panel



1. AMP main output L+R
2. REC recording out L+R
3. CH B USB connection
4. CH B Line input L+R
5. CH A USB connection
6. CH A Line input L+R

## Top Panel



7. CH A line selector
8. MIC level slider
9. MIC input 6.3mm jack
10. CH A level slider
11. CUE select CH A/CH B
12. CROSSFADER CH A/CH B
13. Headphone level control
14. CH B level slider
15. Headphone outputs
16. MASTER level slider
17. CH B line selector

## Connection

Before connecting to amplifier or other equipment, turn down all volume controls to avoid loud noises which may cause damage to other equipment. Always switch amplifier power on last in line with volume levels down.

The Mini:Mix-2.0 can be used in conjunction with a PC or Mac computer by connecting both rear panel USB connectors to the computer. CH A USB provides power to the Mini:Mix-2.0. If only one USB connection is required, use CH A USB to supply power to the Mini:Mix-2.0.

The Mini:Mix-2.0 is plug & play compatible and should be recognized by the computer as a generic USB audio device. If it is not detected, check the USB lead and download any updates available for the operating system. It may be necessary to change the computer's audio settings to select the Mini:Mix-2.0 as the active audio input or output device.

The Mini:Mix-2.0 can be used as a stand-alone audio mixer by selecting Line input for both channels and connecting a USB power adaptor to the CH A USB connector (5Vdc, 500mA). Using good quality RCA leads, connect AMP outputs from the Mini:Mix-2.0 to amplifier or active speakers.

If a microphone is to be used, connect this to the front panel 6.3mm MIC input jack. Connect line level sources such as CD player or mp3 player to CH A and CH B line inputs. Connect headphones to either front 3.5mm or 6.3mm jack output for monitoring. Recording equipment can be connected via the "REC" outputs using a twin RCA lead for a stereo output independent of the MASTER level slider.

## Operation

Gradually turn up the amplifier or active speakers to the required volume level. Turn up the MASTER level slider part way for checking. Check the microphone by speaking into it and gradually increasing the MIC level slider. For line inputs, ensure that the sound source is playing and gradually increase the level slider. For USB audio, switch the channel line selector to USB and start playback from the preferred audio software installed on the computer. Ensure all levels on the software player are turned up and gradually increase the channel level slider on the Mini:Mix-2.0 Likewise, the main mix output can be delivered to PC or Mac via either USB connection. Sliding the CROSSFADER from left to right fades between CH A and CH B in the main mix. Pressing the CUE button in selects CH B to headphones. Left in the out position selects CH A. Set the MASTER level slider to the required volume level during use and move down to zero before disconnecting or connecting any inputs. Remember to turn amp or active speakers down fully before disconnecting the Mini:Mix-2.0 from the system.

## Troubleshooting

No power LED	Ensure CH A USB is connected to an active USB power supply
No output from line inputs	Check signal source is playing and volume is turned up
	Check input signals and condition of connection leads
	Check CROSSFADER is not selected to opposite channel
	Check channel fader is not fully down
	Check MASTER fader is not fully down
Power and VU LEDs lit but no output	Check output connections to amplifier or recorder
	Check amplifier or recorder levels are not turned fully down
No output from PC/Mac via USB	Check that USB audio device is recognized by computer
	Check that USB audio device is selected for output in software
	Check that volume levels are turned up in software player
	Check that channel line selector is switched to USB
Output is very loud or distorted	Check level of input signal is not too high
	Reduce channel and MASTER faders levels
	Check input gain level on recorder or recording software
Output is working but at very low level	Check input audio source level is not too low
	Increase channel and MASTER faders levels
	Check input gain level on recorder or recording software