



I N S T R U C T I O N M A N U A L

Digi Two

Audio & video MIDI controller with Virtual DJ software

M A N U A L V E R S I O N 1 . 0
3 1 / 0 7 / 1 2

Due to continuous product development, please ensure that you have downloaded the latest instruction manual for this product from the Kam website at www.kam.co.uk

For the latest updates and information on the entire Kam range visit:

www.kam.co.uk

Kam products are manufactured by: **Lamba plc**, Unit 1, Southfields Road, Dunstable, Bedfordshire, United Kingdom LU6 3EJ
Telephone: (+44) (0)1582 690600 • Fax: (+44) (0)1582 690400 • Email: mail@lambaplc.com • Web: www.lambaplc.com

Due to continuous product development, specifications and appearance are subject to change. © Copyright Lamba plc 2012. E&OE.



M A D E I N C H I N A

Thank you for purchasing this Kam product, we are sure that it will serve you for many years to come.

To optimise the performance of this product, please read these operating instructions carefully to familiarise yourself with the basic operations of this unit. Please retain them for future reference. This unit has been tested at the factory before being shipped to you.

To prevent or reduce the risk of electrical shock or fire, do not expose the unit to rain or moisture. To prevent a fire hazard, do not expose the unit to any naked flame sources. Unplug this apparatus during lightning storms or if it is unlikely to be used for long periods of time.

When installing the unit, please ensure you leave enough space around the unit for ventilation. Slots and openings in the unit are provided for ventilation to ensure reliable operation of the product and to protect it from overheating. To prevent fire hazard, the openings should never be blocked or covered.

If the unit is powered by the mains, always handle the power cable by the plug. Never pull out the plug by pulling on the cable. Never touch the power cable when your hands are wet as this could cause an electric shock. Do not tie a knot in the cable. The power cable should be placed such that it is not likely to be stepped on. A damaged power cable can cause a fire or give you an electrical shock. Check the power cord periodically, if you ever find that it is damaged, replace it before using the unit again. Contact your retailer for a replacement.

The voltage of the available power supply differs according to country or region. Be sure that the power supply voltage of the area where this unit is to be used meets the required written on the unit.

The lightning flash symbol inside a triangle is to alert the user to the presence high voltage within the unit's enclosure that may be of sufficient power to constitute a risk of electrical shock to persons.

Caution: to prevent the risk of electric shock, do not attempt to open the unit. No user-serviceable parts inside. Refer all servicing to qualified service personnel.

The exclamation mark inside a triangle is intended to alert the user to the presence of important operating and maintenance instructions in the literature accompanying the appliance.

Select the installation location of your unit carefully. Avoid placing it in direct sunlight or locations subject to vibration and excessive dust. Do not use the unit where there are extremes in temperature (below 41°F / 5°C or exceeding 95°F / 35°C).

Unpacking and safety Please unpack your new product carefully. Your new product should reach you in perfect condition. Please check that no damage has occurred during transit. If any damage is found, do not operate your unit. Please contact the retailer you purchased it from immediately. If there is any damage to the mains cable do not use the device. Always disconnect the unit from the mains supply when carrying out any cleaning of the unit.

Manufacturer declarations



In compliance with the following requirements: **RoHS Directive (2002/95/EU)** and **WEEE Directive (2002/96/EU)**. If this product is ever no longer functional please take it to a recycling plant for environmentally friendly disposal.

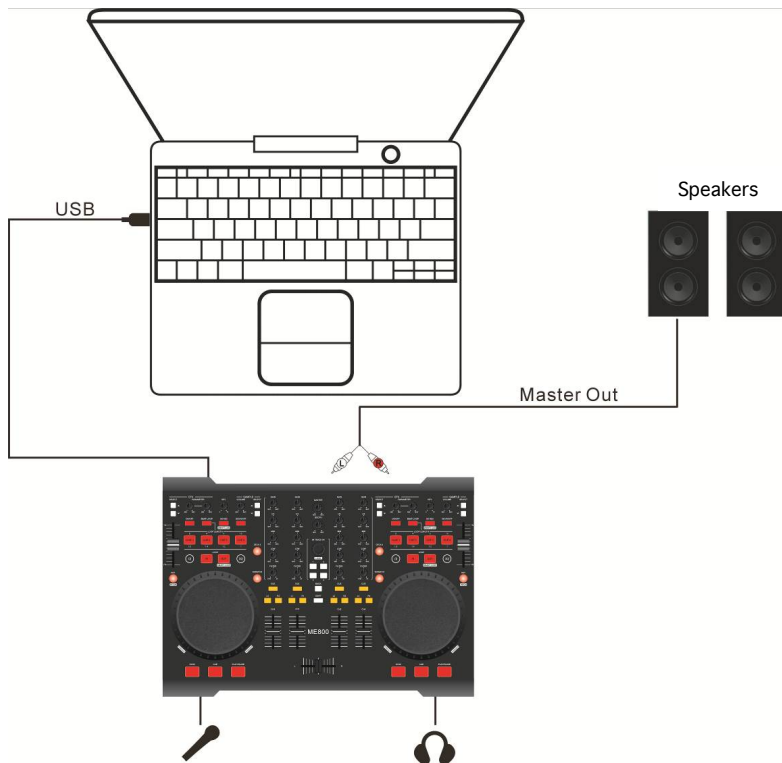
CE declaration of conformity

R&TTE Directive (1999/5/EU), EMC Directive (2004/108/EU), Low Voltage Directive (2006/95/EU).

The declarations are available on application from certification@lambapl.com

Before putting the devices into operation, please observe the respective country-specific regulations.

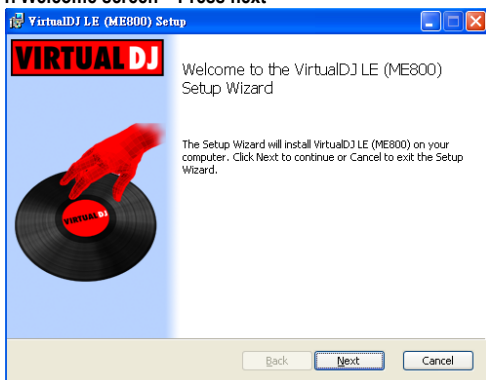
Connection



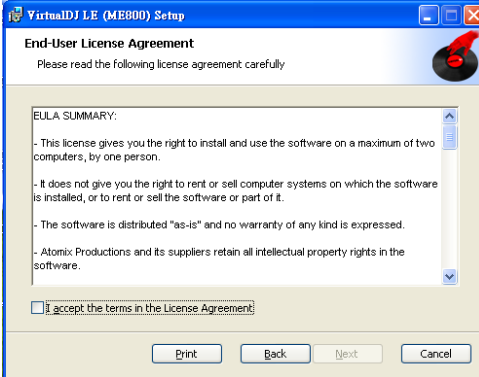
Install Virtual DJ LE Program (CD Included)

Please click the icon of install_virtualdj_le_me800_v7.0.5.
Follow the steps below to continue installation.

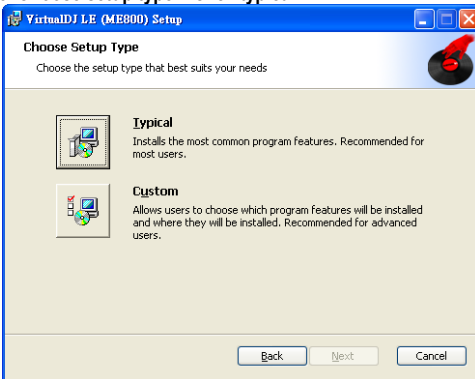
1. Welcome screen – Press next



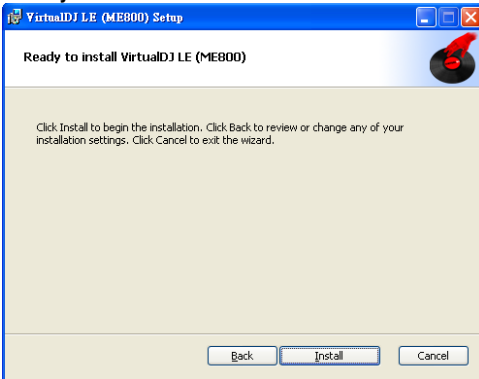
2. End user license agreement – Check the I accept checkbox and press next



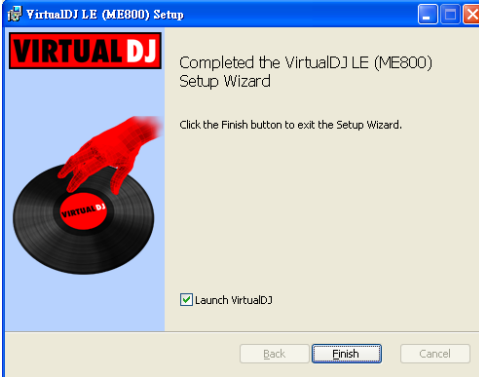
3. Choose setup type – Click typical



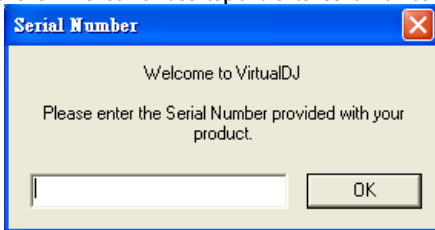
4. Ready to install Virtual DJ LE- Press install



5. Finish installation - Press finish



6. Click VDJ icon on desktop and enter serial number – Start Virtual DJ LE



Soundcard setup

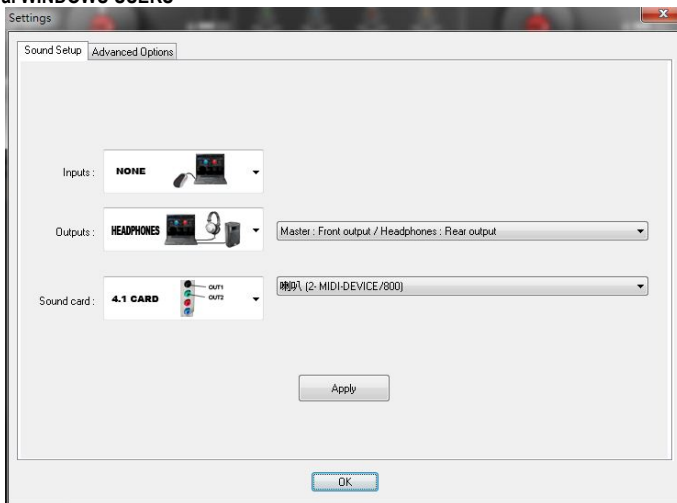
1. Click CONFIG at The Upper Right of The SKIN



2. Choose output and soundcard

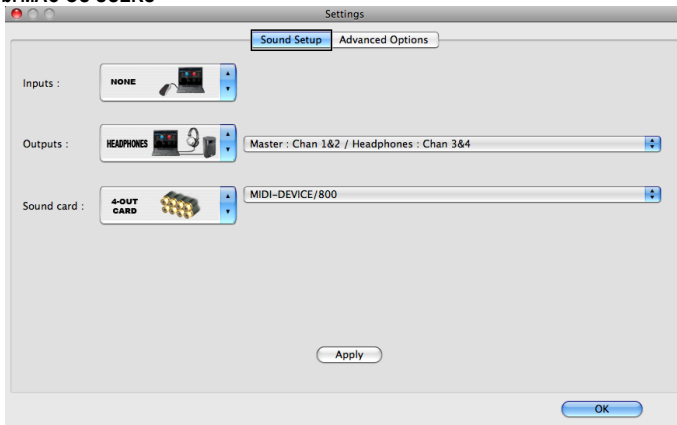
Please do the same setting as the screen copy below to configure the soundcard .

a. WINDOWS USERS

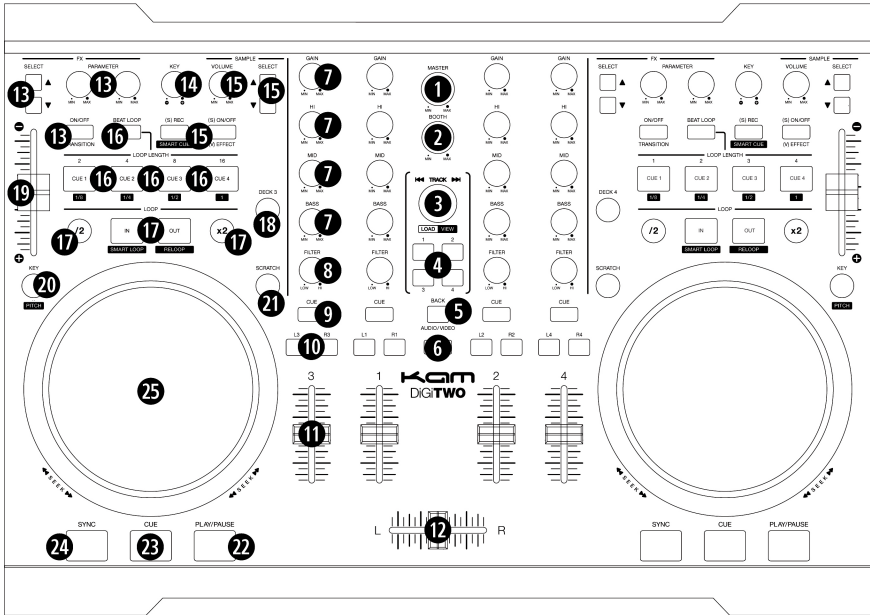


- This product doesn't need any driver for the soundcard. There's an optional third-party driver, ASIO4ALL, that can be used with this product. You can download it from <http://www.asio4all.com/> but it requires additional configuration settings to make the soundcard work properly.

b. MAC OS USERS



Description of the functions



Top view

1. Master

Control the volume of the master output.

2. Booth

Control the volume of the booth output.

3. Track

- Select a track you would like to play.
- Press it to confirm the selection of a folder or a track.

4. Load

Load a track to a specific channel.

5. Back

Press it back to browse other folders. In folder structure panel, press a folder with sub-folders to expand or collapse.

6. Shift

Search: Hold it and dial the jog wheel to search a start point of a track you would like to play from.

Compound Function: Hold it to enable the buttons with the second mapping to activate the compound function.

a. **Key:** When pressing with Shift, it enables to change among different pitch ranges.

b. **Sample Rec:** Press it with Shift to activate Smart Cue function.

c. **In:** Press it with Shift to activate Smart Loop function.

d. **Out:** Press it with Shift to activate Re loop playback.

e. **Load:** Press 1~4 to switch among different control panels.

f. **Cue 1~ Cue 4:** Press one of these four buttons to toggle respective 1/8 ~ 1 beat length for the beat loop playback.

7. **Gain and EQ**

- Gain: Adjust the input signal level.
- Hi: Adjust the input tremble response.
- Mid: Adjust the input midrange response.
- Low: Adjust the input bass response.

8. **Filter**

Turn it to adjust high pass and low pass ratio of Filter sound effect.

9. **Cue**

Press it to monitor its belonging channel.

10. **Fader Assign**

Press L or R to assign a channel to the left side or the right side of the crossfader.

11. **Line Fader**

Use it to adjust the sound level.

12. **Crossfader**

Use it to switch or mix between the playing tracks.

13. **Effect**

Parameter: Turn to adjust the parameter of a sound effect.

Select: Choose a certain effect.

On/Off: Switch on or off the sound effect.

14. **Key**

Adjust the key of the playing track without changing its tempo.

15. **Sample**

Volume: Adjust the volume of a sample playback.

Select: Choose a certain sample.

On/Off: Toggle on or off a sample playback.

16. **Hot Cue & Beat Loop**

Beat Loop: Press it to switch between Beat Loop or Hot Cue mode.

In Hot Cue mode, set a cue point to one of four buttons for instant Hot Cue play.

In Beat Loop mode, these buttons represent the different beat length for instant trigger Beat Loop playback.

17. **Seamless Loop**

Press IN and then press OUT to form a loop playback.

Press /2 or X2 to shift between a beat value for Auto Loop. Press OUT to toggle Auto Loop playback.

When a loop playback is activated, press /2 or X2 to trim the loop length.

18. **Deck Switch**

When this button is illuminated, it means the deck control is switched from Deck 1 to Deck 3 or Deck 2 to Deck 4.

19. **Pitch Fader**

Use it to adjust the pitch up or down to match the beat with the other channel.

20. **Key**

Press it to switch KEY mode on or off. If it is ON, the unit maintains at a constant tempo and doesn't change while the pitch slider is moving.

21. **Scratch**

Press this button to activate the touch sensitive jog wheel to allow touch scratch.

22. Play/ Pause

Press this button to start the playback or let the playback pause.

23. Cue

In pause mode, press this button to set a memorized point for instant play; in play mode, press this button to pause the music and return to the memorized point.

Holding down this button will start the playback from the cue point. Releasing it will pause the track and return to the cue point.

24. SYNC

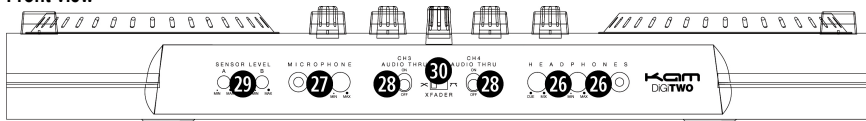
Press it to immediately synchronize with the BPM of the other channel.

25. Jog Wheel

a. Dial it to speed up or slow down the speed to temporarily change the pitch.

b. Use it to do Scratch effect.

Front view



26. Headphone

Connect a headphone with a 6.3mm plug into the jack. Turn Volume knob to adjust the output level and turn Cue/Mix knob to adjust the ratio between master output and cue channel.

27. Mic input

Connect a microphone with a 6.3mm plug into the jack. Turn the knob to control the volume.

28. Audio thru

Use it to switch on/off AUX IN of CH3 and CH4. This function is only available in Virtual DJ PRO 7.

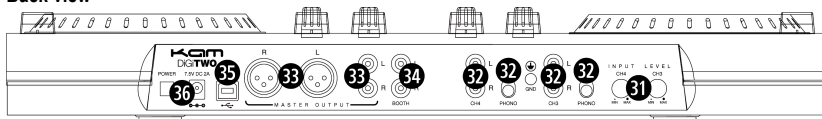
29. Touch sensitive level

This is used only when adjusting the proper touch sensitivity level of the jog wheel for Scratch. When you find the touch sensitivity you prefer, this is not necessary to be adjusted again.

30. Fader curve

Use it to switch between two fader curve modes.

Back view



31. Input level

Use this knob to adjust the proper input volume to prevent distortion.

32. Line/ Phono

Use these two sets of jacks to connect to CD players or turntables.

33. Master output

One set is balanced XLR and the other set is RCA socket. They are used to connect to a main speaker.

34. Booth

Use this set of jack to connect with a monitor speaker.

35. USB connector

Use it to connect to a computer by a USB cable.

36. Power input

Please use the adaptor included in the box to connect to an AC outlet.

Video control

Shift + Audio/Video is used to switch between Audio & Video interface.

Then press Shift + (V) Effect to switch the control panel to the video effect page.

1. **Transition:** Press it to activate the transition based on the crossfader type is selected.
2. **Effect:** Press it to transform the video into a different visual effect.
3. **Volume (CTRL):** This is only for the effect, Boom Auto in LE version.
4. **EFX Select (Transition Select):** It's used to choose a certain crossfading type.
5. **Sample Select (Effect Select):** It's used to choose a certain video effect.

Audio specification

Sampling Frequency: 44.1 KHz

Audio Resolution: 16 bit

Output level: 1.2V+-0.2V

Soundcard: 4IN/ 4OUT

THD+N: < 0.05%

S/N: > 80dB

Crosstalk: > 80dB

*For understanding more about the complete features of Virtual DJ program, please refer to User Guide in the Virtual DJ installation folder.

Lamba plc do not offer software support for Virtual DJ but this can be obtained by visiting the Virtual DJ website <http://www.virtualdj.com/>