

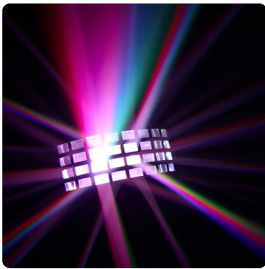
KAM

LED effect lighting

HEXATRIX GLOW

6 lens multi-beam scanning LED lighting effect

192 x 5mm RGB LEDs
72 x red, 72 x green, 48 x blue LEDs
Full DMX512 operation
10 DMX channels
Auto mode
Sound-to-Light operation via built-in mic
Variable mic sensitivity
Master/Slave mode
Tough injection moulded chassis
Adjustable metal hanging bracket
Safety chain loop
Mains fused IEC
Dimensions: 410 x 170 x 320mm (WxHxD)
Weight: 2Kg
PRODUCT CODE: **9070**



DERBY GLOW

32 lens derby LED lighting effect

2 x 9w Tri-colour LEDs
Full DMX512 operation
4 DMX channels
Auto mode
Sound-to-Light operation via built-in mic
Variable mic sensitivity
Master/Slave mode
Fan cooled operation
Tough injection moulded chassis
Adjustable metal hanging bracket
Safety chain loop
Mains fused IEC
Dimensions: 330 x 260 x 330mm (WxHxD)
Weight: 3Kg
PRODUCT CODE: **9072**

DUOTRIX GLOW

2 lens moonflower LED lighting effect

98 x 5mm RGBW LEDs
40 x red, 32 x green, 16 x blue, 10 x white LEDs
Full DMX512 operation / 3 DMX channels
Auto mode
Sound-to-Light operation via built-in mic
Variable mic sensitivity
Master/Slave mode
Fan cooled operation
Tough injection moulded chassis
Adjustable metal hanging bracket
Safety chain loop
Mains fused IEC
Dimensions: 330 x 260 x 320mm (WxHxD)
Weight: 2.9Kg
PRODUCT CODE: **9071**



www.kam.co.uk

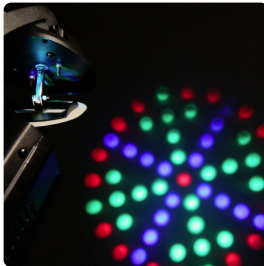
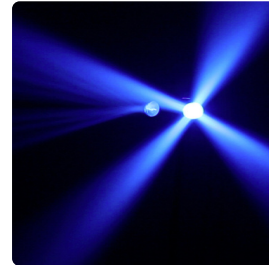
KAM

LED effect lighting

NUMBER 5

2 lens rotating moonflower LED lighting effect

112 x 5mm RGB LEDs
LED Auto flash mode
Sound-to-Light operation via built-in mic
Variable mic sensitivity
Auto, Sound-to-Light and static rotating modes
Tough metal chassis
Adjustable metal hanging bracket
Safety chain loop
Mains fused IEC
Dimensions: 225 x 200 x 270mm (WxHxD)
Weight: 2.4Kg
PRODUCT CODE: **9081**



MINISCAN 1

Mini RGB LED scanner lighting effect

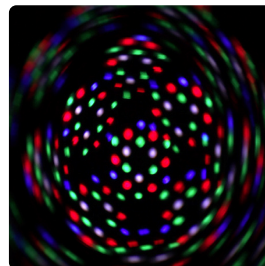
57 x 5mm RGB LEDs
Auto scan activated mirror mode
Sound-to-Light operation via built-in mic
Variable mic sensitivity
Static hold mirror mode
180° scanning mirror
Tough metal chassis
Adjustable metal hanging bracket
Safety chain loop
Mains fused IEC in and out
Dimensions: 125 x 370 x 250mm (WxHxD)
Weight: 2Kg
PRODUCT CODE: **9082**



MINICOLOUR 1

Mini RGBW LED colour changing lighting effect

18 x 5mm RGBW LEDs
6 x Red / 6 x Green / 3 x Blue / 3 x White LEDs
Sound-to-Light operation via built-in mic
Tough metal chassis
Adjustable metal hanging bracket
Safety chain loop
Mains fused IEC
Dimensions: 140 x 205 x 260mm (WxHxD)
Weight: 1.5Kg
PRODUCT CODE: **9083**



www.kam.co.uk

KAM

LED effect lighting

LED QUADTRIX

Stunning 4 lens multi-beam scanning LED lighting effect

Cascade of horizontal and vertical movement with a dynamic spread of light from the high output RGB LEDs

3 speed adjustment of slow, medium and fast modes

Reactive multi-speed effects - essential in any modern lightshow

Unique LED board design and amazing pre-programmed functions

256 ultra bright LEDs

96 x red / 96 x green / 64 x blue LEDs

Auto, Sound-to-Light, DMX512 & Master/Slave modes

12 channel DMX512 operation

3 speed adjustment via dip switches

XLR DMX in and out

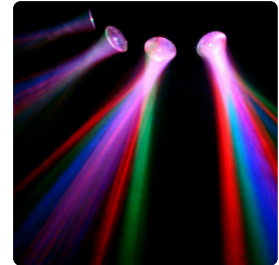
Pre-programmed moving patterns in Auto mode

Robust chassis design / Adjustable hanging bracket

Low power consumption

Dimensions: 550 x 110 x 375mm (WxHxD) / Weight: 6.5Kg

PRODUCT CODE: **9131**



CYCLOPS 1

4 lens flat beam LED lighting effect

72 x 5mm RGB LEDs

24 x red, 24 x green, 24 x blue

Auto mode

Sound-to-Light operation via built-in mic

Variable mic sensitivity

Tough metal chassis

Adjustable metal hanging bracket

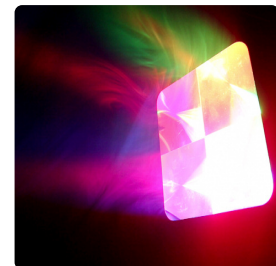
Safety chain loop

Mains fused IEC

Dimensions: 255 x 315 x 350mm (WxHxD)

Weight: 3.3Kg

PRODUCT CODE: **9085**



LED CONCEPT

RGBW flower matrix lighting effect with DMX

Red, green, blue & white LED effects

Extreme wide angle flower lighting effects

Powerful multi-beam spinning and rotating lighting effect

Matrix pattern effect utilising LED technology

Wide angle Fresnel lens

256 bright RGBW 5mm LEDs

Sound-to-Light stand alone & DMX modes

Master/Slave function

4 or 256 DMX channels

Individual control for each LED

Plug & Play operation

Safety mounting loop / tough metal chassis

Mains fused IEC

PRODUCT CODE: **9149**



www.kam.co.uk

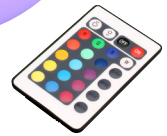
KAM

LED effect lighting

LED MOONLITE 15

Multi-colour changing lighting sphere

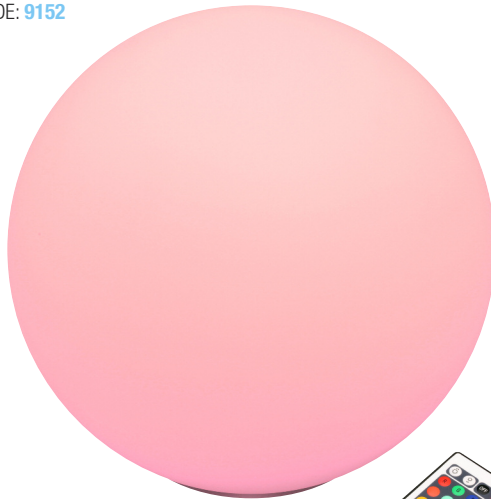
15cm RGB LED mood ball lighting
Remote control
Adjustable flash rate, brightness and fade control
Opaque glass dome with 16 colour creations
12v DC power supply
PRODUCT CODE: **9151**



LED MOONLITE 22

Multi-colour changing lighting sphere

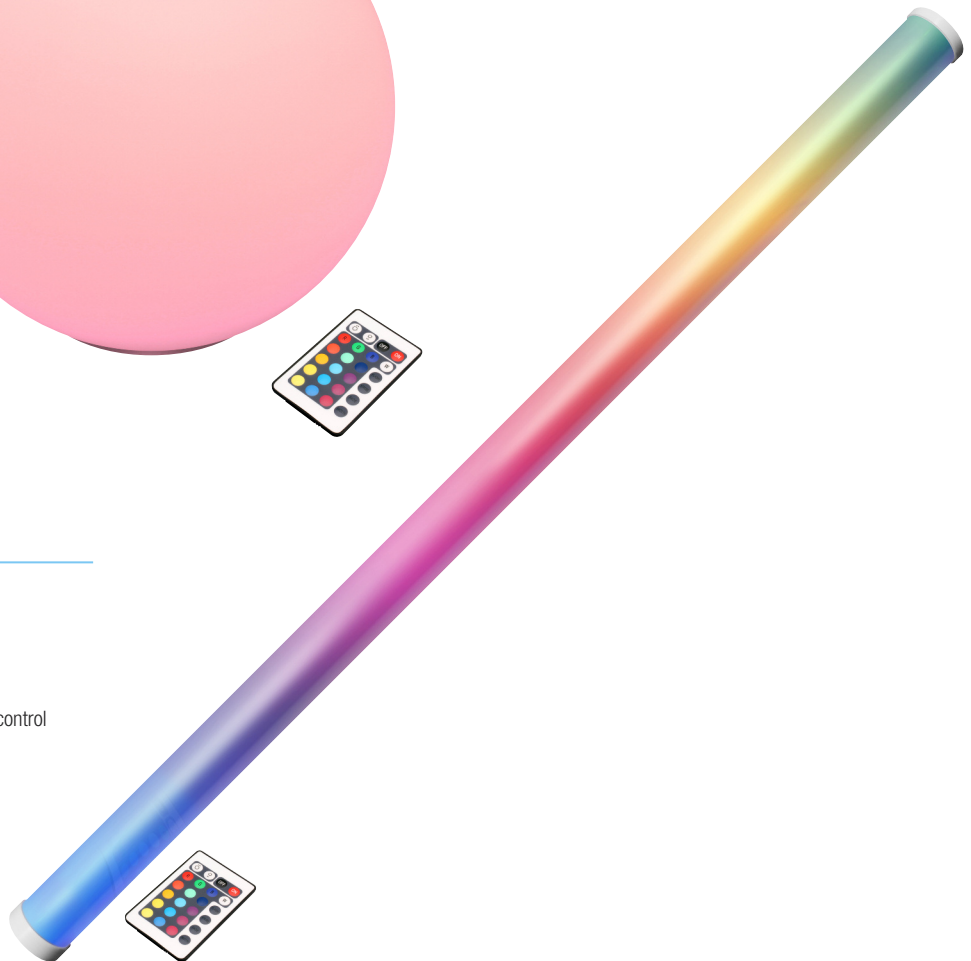
22cm RGB LED mood ball lighting
Remote control
Adjustable flash rate, brightness and fade control
Opaque glass dome with 16 colour creations
12v DC power supply
PRODUCT CODE: **9152**



LED SABRE

Multi-colour changing light tube

RGB LED lighting
Remote control
96 x RGB LEDs
32 x Red, 32 x Green, 32 x Blue
Adjustable flash rate, brightness and fade control
1000mm length
Includes two terry clips for mounting
12v DC power supply
Dimensions: 55 x 1000 x 55mm (WxHxD)
Weight: 0.4Kg
PRODUCT CODE: **9153**



www.kam.co.uk